

**Environmental Monitoring Report
For
January-2026**

**Project: Balanda OCP
Area: Jagannath
Coalfield: Talcher**



Mahanadi Coalfields Limited



Central Mine Planning & Design Institute Ltd.
(A Subsidiary of Coal India Ltd.)

Regional Institute-VII, Samantpuri, P.O : RRL, Bhubaneswar-751013 (Odisha)
[Assistance from Environment Division, CMPDI(HQs), Ranchi]

The test report shall not be reproduced in part or full without written approval of the competent authority

Test Report



राज्यीय
CMPDI
भारत

AMBIENT AIR QUALITY DATA

Area :

Jagannath

(Compliance Station)

Project :

Balanda OCP

(conc. in $\mu\text{g}/\text{cu.m.}$)

Date of Sampling	Monitoring Station	SPM	PM10	PM2.5	SO ₂	NO _x	CO (mg/m ³)	Dust Generating Source(DGS)	Distance from DGS
03-Jan-26	Near NBVL Station (Reported)	252	162	65	18.51	24.35	-	CHP, CT Road	About 600m
21-Jan-26	Near NBVL Station (Reported)	258	169	63	15.69	23.52	-	CHP, CT Road	About 600m

J. Jaisankar
 Authorised Signatory
 CMPDI, RI-VII, LAB
 BHUBANESWAR

Jaisankar

ISIRI Standards Notification dated 23rd September, 2009	500	250		120	120	02(8 Hours)
---	-----	-----	--	-----	-----	-------------



सीएनपीडी.एनई
 2002 एन
cmpdi
 एनई.एनई.एनई

TABLE--

NOISE LEVEL MONITORING DATA

AREA :

Jagannath

PROJECT :

Balanda OCP

DATE OF SAMPLING	STATION	Noise Level Measurement in Leq dB(A)	
		DAY	NIGHT
14-Jan-26	Near NBVL Station (Reported only)	65.7	51.7
30-Jan-26	Near NBVL Station (Reported only)	65.7	52.3

MoEF Standard Notification dated 25th September, 2000	6.00 AM -10.00 PM Leq 75dB(A) (Industrial)	10.00 PM -6.00 AM Leq 70dB(A) (Industrial)
MoEF Standard Notification dated 25th September, 2000	6.00 AM -10.00 PM Leq 55dB(A) (Residential)	10.00 PM -6.00 AM Leq 45dB(A) (Residential)
MoEF Standard Notification dated 25th September, 2000	6.00 AM -10.00 PM Leq 65dB(A) (Commercial)	10.00 PM -6.00 AM Leq 55dB(A) (Commercial)
MoEF Standard Notification dated 25th September, 2000	6.00 AM -10.00 PM Leq 50dB(A) (Silence Zone)	10.00 PM -6.00 AM Leq 40dB(A) (Silence Zone)

Signature
 Authorised Signatory
 CMPDI, RI-VII, LAB
 BHUBANESWAR

Signature



सीएमपीडीआई
विपरी वन
cmpdi
मिनी रोड

Drinking Water Quality Data Jagannath Area

Project / OCP	Balanda OCP	Indian Drinking Standards (IS-10500):2012	
Monitoring Station	Balanda Colony (Reported Only)	Acceptable	Permissible
Date of Sampling	15-Jan-2026	Acceptable	Permissible
Colour(Hazen)	1	5	15
Odour	Agreeable	Agreeable	Agreeable
Taste	Agreeable	Agreeable	Agreeable
Turbidity(NTU)	3.1	1	5
pH	6.81	6.5-8.5	No relaxation
Total Alkalinity(mg/L)	101.28	200	600
Chloride(mg/L)	23.82	250	1000
Sulphate(mg/L)	110	200	400
Nitrate(mg/L)	6.63	45	No relaxation
Total Hardness (Ca CO ₃)(mg/L)	177.40	200	600
Calcium(mg/L)	51.20	75	200
Fluoride(mg/L)	0.69	1	1.5
Total Dissolve Solid(mg/L)	311	500	2000
Copper(mg/L)	<0.03	0.05	1.5
Manganese(mg/L)	<0.04	0.1	0.3
Iron(mg/L)	<0.1	1.0	No relaxation
Zinc(mg/L)	<0.04	5	15
Lead(mg/L)	<0.005	0.01	No relaxation
Cadmium(mg/L)	<0.001	0.003	No relaxation
Total Chromium (mg/L)	<0.01	0.05	No relaxation
Arsenic(mg/L)	<0.005	0.01	No relaxation
Boron(mg/L)	<0.2	0.5	2.4


Authorized Signatory
CMPDI, RI-VII, LAB
SHUBANESWAR





सीएमपीडीआई
लिमिटेड
cmpdi
Mini Ratna

Drinking Water Quality Data Jagannath Area

Project / OCP	Balanda OCP	Indian Drinking Standards (IS-10500):2012	
	Monitoring Station		
Date of Sampling	15-Jan-2026	Acceptable	Permissible
Selenium(mg/L)	<0.005	0.01	No relaxation
Sodium(mg/L)	9.71	-	-
Potassium(mg/L)	4.84	-	-
Phenolics(mg/L)	<0.001	0.001	0.002
Residual Free Chlorine(mg/L)	<0.2	0.2	1.0
MPN (Index/100 ml)	Not Detected	-	-


Authorized Signatory
CMPDI, R.VII, LAB
BHUBANESWAR



**Environmental Monitoring Report
For
January-2026**

**Project: Jagannath OCP
Area: Jagannath
Coalfield: Talcher**



Mahanadi Coalfields Limited



Central Mine Planning & Design Institute Ltd.
(A Subsidiary of Coal India Ltd.)

Regional Institute-VII, Samantpuri, P.O : RRL, Bhubaneswar-751013 (Odisha)
[Assistance from Environment Division, CMPDI(HQs), Ranchi]

The test report shall not be reproduced in part or full without written approval of the competent authority

Test Report



राज्यीय
CMPDI
भुवनेश्वर

AMBIENT AIR QUALITY DATA

Area :

Jagannath

(Compliance Station)

Project :

Jagannath OCP

(conc. in $\mu\text{g}/\text{cu.m.}$)

Date of Sampling	Monitoring Station	SPM	PM10	PM2.5	SO2	NOx	CO (mg/m ³)	Dust Generating Source(DGS)	Distance from DGS
03-Jan-26	Near MDTP	263	175	68	14.54	24.01	-	Railway Siding CHP	About 800m
03-Jan-26	Near NBVL Station	252	162	65	18.51	24.35	-	CHP, CT Road	About 600m
21-Jan-26	Near MDTP	249	146	63	14.42	33.72	-	Railway Siding CHP	About 800m
21-Jan-26	Near NBVL Station	258	169	63	15.69	23.52	-	CHP, CT Road	About 600m

Authorised Signatory
CMPDI, RI-VII, LAB
BHUBANESWAR

Janat

MoEF Standards Notification dated 25th
September, 2009

500	250		120	120	02/8 Hours
-----	-----	--	-----	-----	---------------



सीमापीडीआई
THE INDIAN
cmpdi
INDIA

Test Report

AMBIENT AIR QUALITY DATA

Area :

Jagannath

(Reference Station)

Project :

Jagannath OCP

(conc. in $\mu\text{g}/\text{cu.m.}$)

Date of Sampling	Monitoring Station	SPM	PM10	PM2.5	SO2	NOx	Dust Generating Source(DGS)	Distance from DGS
05-Jan-26	CWS Colony, Meeti	198	83	46	18.51	28.65	Mining Activity	About 1500 m
05-Jan-26	Kurihan Village	224	93	51	18.58	33.76	Mining Activities	About 500m
05-Jan-26	Central Nursery (Reported Only)	205	83	46	15.35	34.51	Open-Cast Mine	Less than 500m
06-Jan-26	Central Nursery (Reported Only)	230	90	52	17.77	31.51	Open-Cast Mine	Less than 500m
06-Jan-26	CWS Colony, Meeti	228	91	52	15.81	27.93	Mining Activity	About 1500 m
06-Jan-26	Kurihan Village	220	83	45	17.77	30.76	Mining Activities	About 500m
12-Jan-26	Kurihan Village	219	89	50	21.41	22.51	Mining Activities	About 500m
12-Jan-26	Central Nursery (Reported Only)	242	93	54	17.35	35.81	Open-Cast Mine	Less than 500m
12-Jan-26	CWS Colony, Meeti	196	79	44	19.28	25.78	Mining Activity	About 1500 m
13-Jan-26	Central Nursery (Reported Only)	223	88	50	19.39	25.51	Open-Cast Mine	Less than 500m
13-Jan-26	CWS Colony, Meeti	221	92	50	14.65	37.96	Mining Activity	About 1500 m
13-Jan-26	Kurihan Village	208	85	46	16.16	26.26	Mining Activities	About 500m
19-Jan-26	CWS Colony, Meeti	209	85	47	30.78	31.37	Mining Activity	About 1500 m
19-Jan-26	Kurihan Village	203	83	47	18.66	19.60	Mining Activities	About 500m
19-Jan-26	Central Nursery (Reported Only)	215	84	48	18.66	26.66	Open-Cast Mine	Less than 500m
20-Jan-26	Central Nursery (Reported Only)	202	79	44	12.72	19.60	Open-Cast Mine	Less than 500m
20-Jan-26	CWS Colony, Meeti	198	78	43	14.84	35.29	Mining Activity	About 1500 m
20-Jan-26	Kurihan Village	198	79	46	17.81	28.23	Mining Activities	About 500m
27-Jan-26	Central Nursery (Reported Only)	220	86	49	19.93	33.72	Open-Cast Mine	Less than 500m
27-Jan-26	CWS Colony, Meeti	203	80	45	20.78	36.07	Mining Activity	About 1500 m

*N44QS,2009

100 80 80 80

Signature
Authorised Signatory
CMPDI, RI-VII, LAB
BHUBANESWAR

Signature

Project :

Jagannath OCP

(conc. in $\mu\text{g}/\text{cu.m.}$)

Date of Sampling	Monitoring Station	SPM	PM10	PM2.5	SO2	NOx	Dust Generating Source(DGS)	Distance from DGS
27-Jan-26	Kurihan Village	189	76	43	11.45	24.31	Mining Activities	About 500m
28-Jan-26	Kurihan Village	205	84	48	16.52	34.67	Mining Activities	About 500m
28-Jan-26	Central Nursery (Reported Only)	227	90	51	16.52	39.79	Open-Cast Mine	Less than 500m
28-Jan-26	CWS Colony, Meeti	211	84	48	18.24	23.52	Mining Activity	About 1500 m

J. Jaisankar
Authorised Signatory
CMPDI, RI-VII, LAB
BHUBANESWAR

Jaisankar

7/44/05,2009

100 60 80 80



Test Report

AMBIENT AIR QUALITY DATA (NAAQS PARAMETER)

Area : Jagannath

Project : Jagannath OCP

Date of Sampling	Monitoring Station	Ammonia (NH ₃)	Ozone (O ₃)	Lead (Pb)	Arsenic (As)	Nickel (Ni)	CO	Benzo(a)Pyrene	Benzene
		(µg/m ³)	(µg/m ³)	(µg/m ³)	(ng/m ³)	(ng/m ³)	(mg/m ³)	(ng/m ³)	(µg/m ³)
05-Jan-26	Kurihan Village	<20.0	13.27	<0.1	<1.0	<1.0	1.3	BQL(QL)=0.7	BQL
05-Jan-26	Central Nursery (Reported Only)	<20.0	26.55	<0.1	<1.0	<1.0	1.7	BQL(QL)=0.7	BQL
05-Jan-26	CWS Colony, Meeti	<20.0	24.33	<0.1	<1.0	<1.0	1.4	BQL(QL)=0.7	BQL
06-Jan-26	CWS Colony, Meeti	<20.0	21.13	<0.1	<1.0	<1.0	0.9	BQL(QL)=0.7	BQL
06-Jan-26	Kurihan Village	<20.0	12.78	<0.1	<1.0	<1.0	1.7	BQL(QL)=0.7	BQL
06-Jan-26	Central Nursery (Reported Only)	<20.0	13.52	<0.1	<1.0	<1.0	1.5	BQL(QL)=0.7	BQL
12-Jan-26	Central Nursery (Reported Only)	<20.0	27.28	<0.1	<1.0	<1.0	1.7	BQL(QL)=0.7	BQL
12-Jan-26	CWS Colony, Meeti	<20.0	15.98	<0.1	<1.0	<1.0	1.1	BQL(QL)=0.7	BQL
12-Jan-26	Kurihan Village	<20.0	11.30	<0.1	<1.0	<1.0	1.7	BQL(QL)=0.7	BQL
13-Jan-26	CWS Colony, Meeti	<20.0	24.33	<0.1	<1.0	<1.0	1.7	BQL(QL)=0.7	BQL
13-Jan-26	Kurihan Village	<20.0	22.37	<0.1	<1.0	<1.0	1.7	BQL(QL)=0.7	BQL
13-Jan-26	Central Nursery (Reported Only)	<20.0	14.50	<0.1	<1.0	<1.0	1.7	BQL(QL)=0.7	BQL
19-Jan-26	Kurihan Village	<20.0	22.87	<0.1	<1.0	<1.0	1.1	BQL(QL)=0.7	BQL
19-Jan-26	Central Nursery (Reported Only)	<20.0	25.07	<0.1	<1.0	<1.0	1.1	BQL(QL)=0.7	BQL
19-Jan-26	CWS Colony, Meeti	<20.0	26.55	<0.1	<1.0	<1.0	1.3	BQL(QL)=0.7	BQL
20-Jan-26	CWS Colony, Meeti	<20.0	21.88	<0.1	<1.0	<1.0	1.6	BQL(QL)=0.7	BQL
20-Jan-26	Kurihan Village	<20.0	17.95	<0.1	<1.0	<1.0	1.0	BQL(QL)=0.7	BQL
20-Jan-26	Central Nursery (Reported Only)	<20.0	28.02	<0.1	<1.0	<1.0	1.7	BQL(QL)=0.7	BQL
27-Jan-26	CWS Colony, Meeti	<20.0	14.50	<0.1	<1.0	<1.0	1.5	BQL(QL)=0.7	BQL
27-Jan-26	Kurihan Village	<20.0	24.33	<0.1	<1.0	<1.0	1.3	BQL(QL)=0.7	BQL
27-Jan-26	Central Nursery (Reported Only)	<20.0	22.62	<0.1	<1.0	<1.0	0.8	BQL(QL)=0.7	BQL
28-Jan-26	Central Nursery (Reported Only)	<20.0	14.50	<0.1	<1.0	<1.0	1.5	BQL(QL)=0.7	BQL
28-Jan-26	CWS Colony, Meeti	<20.0	14.25	<0.1	<1.0	<1.0	1.5	BQL(QL)=0.7	BQL
28-Jan-26	Kurihan Village	<20.0	26.80	<0.1	<1.0	<1.0	1.3	BQL(QL)=0.7	BQL

Standard	400(24hrs)	180(hourly)	1.0(24hours)	6.0(Annual)	20(Annual)	02(8hourly)	01(annual)	05(annual)
----------	------------	-------------	--------------	-------------	------------	-------------	------------	------------

Janak



सीएनपीडीआई
2002 एन
cmpdi
INDIA 2002

TABLE-

NOISE LEVEL MONITORING DATA

AREA :

Jagannath

PROJECT :

Jagannath OCP

DATE OF SAMPLING	STATION	Noise Level Measurement in Leq dB(A)	
		DAY	NIGHT
14-Jan-26	Near NBVL Station	65.7	57.7
14-Jan-26	Near MDTP	63.9	51.9
14-Jan-26	CWS Colony, MEETI	47.8	39.2
14-Jan-26	Central Nursery (Reported only)	61.2	50.7
30-Jan-26	Near NBVL Station	65.2	52.3
30-Jan-26	Near MDTP	62.4	50.1
30-Jan-26	CWS Colony, MEETI	46.7	38.1
30-Jan-26	Central Nursery (Reported only)	63.8	52.7

MoEF Standard Notification dated 25th September, 2000	6.00 AM -10.00 PM Leq 75dB(A) (Industrial)	10.00 PM -6.00 AM Leq 70dB(A) (Industrial)
MoEF Standard Notification dated 25th September, 2000	6.00 AM -10.00 PM Leq 55dB(A) (Residential)	10.00 PM -6.00 AM Leq 45dB(A) (Residential)
MoEF Standard Notification dated 25th September, 2000	6.00 AM -10.00 PM Leq 65dB(A) (Commercial)	10.00 PM -6.00 AM Leq 55dB(A) (Commercial)
MoEF Standard Notification dated 25th September, 2000	6.00 AM -10.00 PM Leq 50dB(A) (Silence Zone)	10.00 PM -6.00 AM Leq 40dB(A) (Silence Zone)


Anil Kumar Singh
CMPDI, RI-VII, LAB
BHUBANESWAR



TABLE-



राष्ट्रीय प्रदूषण नियंत्रण बोर्ड
INDIA
cmpdi
CENTRAL POLLUTION CONTROL BOARD

EFFLUENT QUALITY DATA

Area :

Jagannath

(All dimensions are in mg/l unless otherwise stated except pH)

Project :

Jagannath OCP

Date of Sampling	Sampling Station	pH	Oil & Grease	TSS	COD	BOD	Remarks
15-Jan-26	Central Sump at Quarry no. 8	7.26	-	-	-	-	
15-Jan-26	Face Sump	3.40	<4.0	18	20	-	
15-Jan-26	O & G Trap Inlet	6.86	<4.0	34	28	-	
15-Jan-26	O & G Trap Outlet	6.97	<4.0	32	16	-	
15-Jan-26	Sump at Quarry No. 4, Near MDTP	6.68	<4.0	36	40	-	
31-Jan-26	O & G Trap Inlet	6.67	<4.0	40	32	-	
31-Jan-26	O & G Trap Outlet	6.85	<4.0	26	44	-	

T. Prasad
Authorised Signatory
CMPDI, RI-VII, LAB
BHUBANESWAR

Jagannath

MoEF Standard Notification dated 25th September, 2000
and MoEF Schedule VI, General standard for discharge
of Environmental Pollutants Part A: Effluents

5.5-9.0	10	100	250	30
---------	----	-----	-----	----



ଓଡ଼ିଶା ପୀଠିକା
ମାଧ୍ୟମ
cmpdi
ଭୁବନେଶ୍ୱର

Test Report

EFFLUENT QUALITY DATA

Area :

Jagannath

(All dimensions are in mg/l unless otherwise stated except pH)

Project :

Jagannath OCP

Date of Sampling	Sampling Station	pH	Oil & Grease	TSS	COD	BOD	MPN/100mL
15-Jan-26	STP INLET	6.85	-	48	-	3.6	220
15-Jan-26	STP OUTLET	7.68	-	30	-	2.2	170
31-Jan-26	STP INLET	6.72	-	28	-	4.2	240
31-Jan-26	STP OUTLET	7.77	-	22	-	2.7	210

J. J. J.
Authorised Signatory
CMPDI, RI-VII, LAB
BHUBANESHWAR

J. J. J.

G.S.R. 1265(E) Effluent discharge standards (applicable to all mode of disposal), Sewage Treatment Plants (STPs)

6.5-9.0 - <100 - 30 <1000



सीएमपीडीआई
मिनी लैब
cmpdi
Mini Lab

Drinking Water Quality Data Jagannath Area

Project / OCP	Jagannath OCP			Indian Drinking Standards (IS-10500):2012	
	Monitoring Station	Jagannath Colony	Rakas Village Well Water		
Date of Sampling	15-Jan-2026	15-Jan-2026	15-Jan-2026	Acceptable	Permissible
Colour(Hazen)	1	2	1	5	15
Odour	Agreeable	Agreeable	Agreeable	Agreeable	Agreeable
Taste	Agreeable	Agreeable	Agreeable	Agreeable	Agreeable
Turbidity(NTU)	2.5	1.7	3.1	1	5
pH	6.71	6.98	6.81	6.5-8.5	No relaxation
Total Alkalinity(mg/L)	97.06	80.18	101.28	200	600
Chloride(mg/L)	25.80	21.83	23.82	250	1000
Sulphate(mg/L)	107.54	66.56	110	200	400
Nitrate(mg/L)	3.92	<0.5	6.63	45	No relaxation
Total Hardness (Ca CO ₃)(mg/L)	173.37	129.02	177.40	200	600
Calcium(mg/L)	54.40	20.80	51.20	75	200
Fluoride(mg/L)	0.66	0.56	0.69	1	1.5
Total Dissolve Solid(mg/L)	298	228	311	500	2000
Copper(mg/L)	<0.03	<0.03	<0.03	0.05	1.5
Manganese(mg/L)	<0.04	<0.04	<0.04	0.1	0.3
Iron(mg/L)	<0.1	<0.1	<0.1	1.0	No relaxation
Zinc(mg/L)	<0.04	<0.04	<0.04	5	15
Lead(mg/L)	<0.005	<0.005	<0.005	0.01	No relaxation
Cadmium(mg/L)	<0.001	<0.001	<0.001	0.003	No relaxation
Total Chromium (mg/L)	<0.01	<0.01	<0.01	0.05	No relaxation
Arsenic(mg/L)	<0.005	<0.005	<0.005	0.01	No relaxation
Boron(mg/L)	<0.2	<0.2	<0.2	0.5	2.4

T. H. H. H.
Authorized Signatory
CMPDI, RI-VII, LAB
BHUBANESWAR

for use



सीएमपीडीआई
जि.पी.एल.
cmpdi
MPDI ROTMG

Drinking Water Quality Data Jagannath Area

Project / OCP	Jagannath OCP			Indian Drinking Standards (IS-10500):2012	
	Monitoring Station	Jagannath Colony	Rakas Village Well Water	Balanda Colony	
Date of Sampling	15-Jan-2026	15-Jan-2026	15-Jan-2026	Acceptable	Permissible
Selenium(mg/L)	<0.005	<0.005	<0.005	0.01	No relaxation
Sodium(mg/L)	6.78	8.35	9.71	-	-
Potassium(mg/L)	1.6	2.14	4.84	-	-
Phenolics(mg/L)	<0.001	<0.001	<0.001	0.001	0.002
Residual Free Chlorine(mg/L)	<0.2	<0.2	<0.2	0.2	1.0
MPN (Index/100 ml)	Not Detected	Not Detected	Not Detected	-	-

Talkhwal
Authorised Signatory
CMPDI, RI-VII, LAB
BHUBANESWAR

Jasmati

Jagannath OCP

Kurihan village

Legend
Monitoring Station



Google Earth

Environmental Monitoring Report For January-2026

**Project: Ananta OCP
Area: Jagannath
Coalfield: Talcher**



Mahanadi Coalfields Limited



सीएमपीडीआई
एनपीएल
cmpdi
Mini Ratna

Central Mine Planning & Design Institute Ltd.
(A Subsidiary of Coal India Ltd.)

Regional Institute-VII, Samantpuri, P.O : RRL, Bhubaneswar-751013 (Odisha)
[Assistance from Environment Division, CMPDI(HQs), Ranchi]

The test report shall not be reproduced in part or full without written approval of the competent authority

Test Report



AMBIENT AIR QUALITY DATA

Area :

Jagannath

(Compliance Station)

Project :

Ananta OCP

(conc. in $\mu\text{g}/\text{cu.m.}$)

Date of Sampling	Monitoring Station	SPM	PM10	PM2.5	SO2	NOx	CO (mg/m ³)	Dust Generating Source(DGS)	Distance from DGS
03-Jan-26	North East of Mine	258	162	67	17.35	27.21	1.7	Open-Cast Mine	Less than 500m
03-Jan-26	Near NBVL Station (Reported)	252	162	65	18.51	24.35	-	CHP, CT Road	About 600m
21-Jan-26	North East of Mine	243	157	64	21.87	37.14	1.1	Open-Cast Mine	Less than 500m
21-Jan-26	Near NBVL Station (Reported)	258	169	63	15.69	23.52	-	CHP, CT Road	About 600m

Authorized Signatory
CMPDI, RI-VII, LAB
BANESWAR

Signature

MoEF Standards Notification dated 25th September, 2009	500	250		120	120	62/8 Hours)
--	-----	-----	--	-----	-----	-------------



Test Report

AMBIENT AIR QUALITY DATA

Area :

Jagannath

(Reference Station)

Project :

Ananta OCP

(conc. in $\mu\text{g}/\text{cu.m.}$)

Date of Sampling	Monitoring Station	SPM	PM10	PM2.5	SO2	NOx	Dust Generating Source(DGS)	Distance from DGS
05-Jan-26	Guthasahi Village	210	85	49	24.17	39.39	Mining Activities	About 3km
05-Jan-26	Asanabahali Village	189	77	44	15.75	21.01	Domestic and Mining Activities	About 4km
05-Jan-26	Sibarampur Village	185	71	40	18.30	26.54	Domestic and Mining Activities	About 4km
05-Jan-26	Central Nursery	205	83	46	15.35	34.51	Open-Cast Mine	Less than 500m
06-Jan-26	Sibarampur Village	204	79	48	18.51	22.20	Domestic and Mining Activities	About 4km
06-Jan-26	Guthasahi Village	196	83	46	17.81	22.06	Mining Activities	About 3km
06-Jan-26	Central Nursery	230	90	52	17.77	31.51	Open-Cast Mine	Less than 500m
06-Jan-26	Asanabahali Village	195	82	46	21.81	26.26	Domestic and Mining Activities	About 4km
12-Jan-26	Central Nursery	242	93	54	17.35	35.81	Open-Cast Mine	Less than 500m
12-Jan-26	Sibarampur Village	192	76	44	19.39	35.26	Domestic and Mining Activities	About 4km
12-Jan-26	Guthasahi Village	223	90	50	24.17	35.45	Mining Activities	About 3km
12-Jan-26	Asanabahali Village	228	88	50	18.66	37.81	Domestic and Mining Activities	About 4km
13-Jan-26	Sibarampur Village	219	86	51	13.49	21.49	Domestic and Mining Activities	About 4km
13-Jan-26	Guthasahi Village	234	94	52	19.93	29.94	Mining Activities	About 3km
13-Jan-26	Asanabahali Village	236	93	54	18.51	34.38	Domestic and Mining Activities	About 4km
13-Jan-26	Central Nursery	223	88	50	19.39	25.51	Open-Cast Mine	Less than 500m
19-Jan-26	Guthasahi Village	217	88	52	16.54	26.66	Mining Activities	About 3km
19-Jan-26	Sibarampur Village	195	78	40	18.75	40.45	Domestic and Mining Activities	About 4km
19-Jan-26	Asanabahali Village	217	83	48	25.89	31.37	Domestic and Mining Activities	About 4km
19-Jan-26	Central Nursery	215	84	48	18.66	26.66	Open-Cast Mine	Less than 500m

*NAAQS,2009

100 50 80 80

Authorised Signatory
CMPDI, RI-VII, LAB
BHUBANESWAR

Janak

Project :

Ananta OCP

(conc. in $\mu\text{g}/\text{cu.m.}$)

Date of Sampling	Monitoring Station	SPM	PM10	PM2.5	SO2	NOx	Dust Generating Source(DGS)	Distance from DGS
20-Jan-26	Sibarampur Village	182	72	37	19.20	40.45	Domestic and Mining Activities	About 4km
20-Jan-26	Guthasahi Village	207	84	46	19.51	28.23	Mining Activities	About 3km
20-Jan-26	Central Nursery	202	79	44	12.72	19.60	Open-Cast Mine	Less than 500m
20-Jan-26	Asanabahali Village	210	87	50	28.12	41.27	Domestic and Mining Activities	About 4km
27-Jan-26	Central Nursery	220	86	49	19.93	33.72	Open-Cast Mine	Less than 500m
27-Jan-26	Guthasahi Village	204	81	44	12.05	33.84	Mining Activities	About 3km
27-Jan-26	Asanabahali Village	194	77	43	24.03	31.37	Domestic and Mining Activities	About 4km
27-Jan-26	Sibarampur Village	205	81	44	11.87	23.52	Domestic and Mining Activities	About 4km
28-Jan-26	Sibarampur Village	212	87	48	16.52	19.81	Domestic and Mining Activities	About 4km
28-Jan-26	Asanabahali Village	175	75	40	27.23	23.11	Domestic and Mining Activities	About 4km
28-Jan-26	Guthasahi Village	185	74	41	11.87	30.58	Mining Activities	About 3km
28-Jan-26	Central Nursery	227	90	51	16.52	39.79	Open-Cast Mine	Less than 500m

Jatanaik
Authorised Signatory
CMPDI, RI-VII, LAB
BHUBANESWAR

Jamali

ISMAQS, 2007

100 60 60 60



Test Report

AMBIENT AIR QUALITY DATA (NAAQS PARAMETER)

Area : Jagannath

Project : Ananta OCP

Date of Sampling	Monitoring Station	Ammonia (NH ₃)	Ozone (O ₃)	Lead (Pb)	Arsenic (As)	Nickel (Ni)	CO	Benzo(a)Pyrene	Benzene
		(µg/m ³)	(µg/m ³)	(µg/m ³)	(ng/m ³)	(ng/m ³)	(mg/m ³)	(ng/m ³)	(µg/m ³)
05-Jan-26	Sibarampur Village	<20.0	16.97	<0.1	<1.0	<1.0	1.2	BQL(QL)=0.7	BQL
05-Jan-26	Central Nursery	<20.0	26.55	<0.1	<1.0	<1.0	1.7	BQL(QL)=0.7	BQL
05-Jan-26	Guthasahi Village	<20.0	13.52	<0.1	<1.0	<1.0	0.9	BQL(QL)=0.7	BQL
05-Jan-26	Asanabahali Village	<20.0	23.85	<0.1	<1.0	<1.0	0.8	BQL(QL)=0.7	BQL
06-Jan-26	Guthasahi Village	<20.0	13.27	<0.1	<1.0	<1.0	1.6	BQL(QL)=0.7	BQL
06-Jan-26	Sibarampur Village	<20.0	19.92	<0.1	<1.0	<1.0	1.1	BQL(QL)=0.7	BQL
06-Jan-26	Asanabahali Village	<20.0	18.43	<0.1	<1.0	<1.0	1.2	BQL(QL)=0.7	BQL
06-Jan-26	Central Nursery	<20.0	13.52	<0.1	<1.0	<1.0	1.5	BQL(QL)=0.7	BQL
12-Jan-26	Asanabahali Village	<20.0	28.27	<0.1	<1.0	<1.0	1.0	BQL(QL)=0.7	BQL
12-Jan-26	Guthasahi Village	<20.0	25.57	<0.1	<1.0	<1.0	1.6	BQL(QL)=0.7	BQL
12-Jan-26	Sibarampur Village	<20.0	19.42	<0.1	<1.0	<1.0	1.1	BQL(QL)=0.7	BQL
12-Jan-26	Central Nursery	<20.0	27.28	<0.1	<1.0	<1.0	1.7	BQL(QL)=0.7	BQL
13-Jan-26	Guthasahi Village	<20.0	26.30	<0.1	<1.0	<1.0	1.6	BQL(QL)=0.7	BQL
13-Jan-26	Sibarampur Village	<20.0	15.73	<0.1	<1.0	<1.0	1.6	BQL(QL)=0.7	BQL
13-Jan-26	Central Nursery	<20.0	14.50	<0.1	<1.0	<1.0	1.7	BQL(QL)=0.7	BQL
13-Jan-26	Asanabahali Village	<20.0	19.92	<0.1	<1.0	<1.0	0.9	BQL(QL)=0.7	BQL
19-Jan-26	Sibarampur Village	<20.0	12.28	<0.1	<1.0	<1.0	1.1	BQL(QL)=0.7	BQL
19-Jan-26	Asanabahali Village	<20.0	18.93	<0.1	<1.0	<1.0	1.5	BQL(QL)=0.7	BQL
19-Jan-26	Central Nursery	<20.0	25.07	<0.1	<1.0	<1.0	1.1	BQL(QL)=0.7	BQL
19-Jan-26	Guthasahi Village	<20.0	18.43	<0.1	<1.0	<1.0	1.7	BQL(QL)=0.7	BQL
20-Jan-26	Asanabahali Village	<20.0	21.63	<0.1	<1.0	<1.0	1.5	BQL(QL)=0.7	BQL
20-Jan-26	Sibarampur Village	<20.0	22.87	<0.1	<1.0	<1.0	1.2	BQL(QL)=0.7	BQL
20-Jan-26	Guthasahi Village	<20.0	17.20	<0.1	<1.0	<1.0	0.8	BQL(QL)=0.7	BQL
20-Jan-26	Central Nursery	<20.0	28.02	<0.1	<1.0	<1.0	1.7	BQL(QL)=0.7	BQL

Standard	400(24 hours)	180(hours)	1.0(24 hours)	6.0(Annual)	20(Annual)	02(8 hours)	01(annual)	05(annual)
----------	---------------	------------	---------------	-------------	------------	-------------	------------	------------

Authorised Signatory
CMPDI, RI-VII, LAB
BHUBANESWAR

Jasmati

Project :**Ananta OCP**

Date of Sampling	Monitoring Station	Ammonia(NH3)	Ozone(O3)	Lead(Pb)	Arsenic(As)	Nickel(Ni)	CO	Benzo(a)Pyrene	Benzene
		($\mu\text{g}/\text{m}^3$)	($\mu\text{g}/\text{m}^3$)	($\mu\text{g}/\text{m}^3$)	(ng/m^3)	(ng/m^3)	(mg/m^3)	(ng/m^3)	($\mu\text{g}/\text{m}^3$)
27-Jan-26	Guthasahi Village	<20.0	22.62	<0.1	<1.0	<1.0	1.0	BQL(QL)=0.7)	BQL
27-Jan-26	Sibarampur Village	<20.0	26.05	<0.1	<1.0	<1.0	1.7	BQL(QL)=0.7)	BQL
27-Jan-26	Central Nursery	<20.0	22.62	<0.1	<1.0	<1.0	0.8	BQL(QL)=0.7)	BQL
27-Jan-26	Asanabahali Village	<20.0	23.60	<0.1	<1.0	<1.0	1.6	BQL(QL)=0.7)	BQL
28-Jan-26	Asanabahali Village	<20.0	17.70	<0.1	<1.0	<1.0	1.2	BQL(QL)=0.7)	BQL
28-Jan-26	Central Nursery	<20.0	14.50	<0.1	<1.0	<1.0	1.5	BQL(QL)=0.7)	BQL
28-Jan-26	Sibarampur Village	<20.0	22.62	<0.1	<1.0	<1.0	1.2	BQL(QL)=0.7)	BQL
28-Jan-26	Guthasahi Village	<20.0	27.78	<0.1	<1.0	<1.0	0.8	BQL(QL)=0.7)	BQL

Handwritten signature
 Authorized Signatory
 CMPDI, RI-VII, LAG
 BHUBANESWAR

Handwritten signature

Standard	400(24 hours)	180(hour)	1.0(24 hours)	6.0(Annual)	20(Annual)	02(8 hours)	01(annual)	05(annual)
----------	---------------	-----------	---------------	-------------	------------	-------------	------------	------------



सीएनपीडीआई
CMPDI
भारत सरकार

TABLE-

NOISE LEVEL MONITORING DATA

AREA :


Jagannath

PROJECT :

Ananta OCP

DATE OF SAMPLING	STATION	Noise Level Measurement in Leq dB(A)	
		DAY	NIGHT
14-Jan-26	Near NBVL Station (Reported only)	65.7	51.7
14-Jan-26	North East of the Mine	63.7	55.7
14-Jan-26	Guthasahi Village	47.8	39.8
14-Jan-26	Central Nursery	61.2	50.7
30-Jan-26	Near NBVL Station (Reported only)	65.7	52.3
30-Jan-26	North East of the Mine	65.7	50.9
30-Jan-26	Guthasahi Village	40.7	39.3
30-Jan-26	Central Nursery	63.8	52.7

MoEF Standard Notification dated 25th September, 2000	6.00 AM -10.00 PM Leq 75dB(A) (Industrial)	10.00 PM -6.00 AM Leq 70dB(A) (Industrial)
MoEF Standard Notification dated 25th September, 2000	6.00 AM -10.00 PM Leq 55dB(A) (Residential)	10.00 PM -6.00 AM Leq 45dB(A) (Residential)
MoEF Standard Notification dated 25th September, 2000	6.00 AM -10.00 PM Leq 65dB(A) (Commercial)	10.00 PM -6.00 AM Leq 55dB(A) (Commercial)
MoEF Standard Notification dated 25th September, 2000	6.00 AM -10.00 PM Leq 50dB(A) (Silence Zone)	10.00 PM -6.00 AM Leq 40dB(A) (Silence Zone)


Authorised Signatory
CMPDI, RI-VII, LAB
BHUBANESWAR





सीएनपीसीआई
भारत में
cmpdi
मुंबई

TABLE-

EFFLUENT QUALITY DATA

Area :

Jagannath

(All dimensions are in mg/l unless otherwise stated except pH)

Project :

Ananta OCP

Date of Sampling	Sampling Station	pH	Oil & Grease	TSS	COD	BOD	Remarks
15-Jan-26	Mine Sump Water	7.14	<4.0	26	32	-	
15-Jan-26	O & G Trap Inlet	7.13	<4.0	16	24	-	
15-Jan-26	O & G Trap Outlet	7.08	<4.0	14	20	-	
31-Jan-26	O & G Trap Inlet	7.26	<4.0	22	36	-	
31-Jan-26	O & G Trap Outlet	7.15	<4.0	18	28	-	

H. K. Jaiswal
Authorised Signatory
CMPDI, R-VII, LAB
BHUBANESWAR

Jaiswal

MoEF Standard Notification dated 25th September, 2000
and MoEF Schedule VI, General standard for discharge
of Environmental Pollutants Part A: Effluents

5.5-9.0	10	100	250	30
---------	----	-----	-----	----



ଶିବପୀଠୀୟ
1976-77
cmpdi
ଭୁବନେଶ୍ୱର

Test Report

EFFLUENT QUALITY DATA

Area :

Jagannath

(All dimensions are in mg/l unless otherwise stated except pH)

Project :

Ananta OCP

Date of Sampling	Sampling Station	pH	Oil & Grease	TSS	COD	BOD	MPN/100mL
15-Jan-26	STP INLET	6.67	-	34	-	4.2	150
15-Jan-26	STP OUTLET	6.66	-	26	-	3.0	110
31-Jan-26	STP INLET	6.86	-	26	-	2.8	220
31-Jan-26	STP OUTLET	6.36	-	24	-	2.4	130

S. K. Mishra
Authorized Signatory
CMPDI, RI-VII, LAB
BHUBANESWAR

Jagannath

G.S.R. 1265(E) Effluent discharge standards (applicable to all mode of disposal), Sewage Treatment Plants (STPs)

6.5-9.0	-	<100	-	30	<1000
---------	---	------	---	----	-------



सीएमपीडीआई
मिनी लैब
cmpdi
Mini Lab

Drinking Water Quality Data Jagannath Area

Project / OCP	Ananta OCP		Indian Drinking Standards (IS-10500):2012	
	Monitoring Station	Ananta Colony	Dera Village Tube Well Water	
Date of Sampling	15-Jan-2026	15-Jan-2026	Acceptable	Permissible
Colour(Hazen)	2	1	5	15
Odour	Agreeable	Agreeable	Agreeable	Agreeable
Taste	Agreeable	Agreeable	Agreeable	Agreeable
Turbidity(NTU)	1.3	3.2	1	5
pH	6.99	6.04	6.5-8.5	No relaxation
Total Alkalinity(mg/L)	33.61	63.30	200	600
Chloride(mg/L)	15.88	31.76	250	1000
Sulphate(mg/L)	37.26	51.37	200	400
Nitrate(mg/L)	<0.5	11.12	45	No relaxation
Total Hardness (Ca CO ₃)(mg/L)	72.57	112.89	200	600
Calcium(mg/L)	17.60	33.60	75	200
Fluoride(mg/L)	0.37	0.37	1	1.5
Total Dissolve Solid(mg/L)	127	230	500	2000
Copper(mg/L)	<0.03	<0.03	0.05	1.5
Manganese(mg/L)	<0.04	<0.04	0.1	0.3
Iron(mg/L)	<0.1	<0.1	1.0	No relaxation
Zinc(mg/L)	<0.04	<0.04	5	15
Lead(mg/L)	<0.005	<0.005	0.01	No relaxation
Cadmium(mg/L)	<0.001	<0.001	0.003	No relaxation
Total Chromium (mg/L)	<0.01	<0.01	0.05	No relaxation
Arsenic(mg/L)	<0.005	<0.005	0.01	No relaxation
Boron(mg/L)	<0.2	<0.2	0.5	2.4

[Signature]
Authorised Signatory
CMPDI, RI-VII, LAB
BHUBANESWAR

[Signature]



सीएमपीडीआई
केन्द्रीय प्रदूषण नियंत्रण बोर्ड
cmpdi
Mini Ratna

Drinking Water Quality Data Jagannath Area

Project / OCP	Ananta OCP		Indian Drinking Standards (IS-10500):2012	
	Monitoring Station	Ananta Colony		
Date of Sampling	15-Jan-2026	15-Jan-2026	Acceptable	Permissible
Selenium(mg/L)	<0.005	<0.005	0.01	No relaxation
Sodium(mg/L)	5.26	11.7	-	-
Potassium(mg/L)	0.67	4.33	-	-
Phenolics(mg/L)	<0.001	<0.001	0.001	0.002
Residual Free Chlorine(mg/L)	<0.2	<0.2	0.2	1.0
MPN (Index/100 ml)	Not Detected	Not Detected	-	-

Jagannath
Authorised Signatory
CMPDI, RI-VII, LAB
BHUBANESWAR

Jagannath



Legend
● Monitoring Station

Sibarampur Village

Asanabahal Village

North East of Mine

Guthasahi Village

Central Nursery Near NBVL Station

Ananta OCP

Google Earth

**Environmental Monitoring Report
For
January-2026**

**Project: Bharatpur OCP
Area: Bharatpur
Coalfield: Talcher**



Mahanadi Coalfields Limited



Central Mine Planning & Design Institute Ltd.
(A Subsidiary of Coal India Ltd.)

Regional Institute-VII, Samantpuri, P.O : RRL, Bhubaneswar-751013 (Odisha)
[Assistance from Environment Division, CMPDI(HQs), Ranchi]

The test report shall not be reproduced in part or full without written approval of the competent authority



सिंहभद्रपीडीआई
सिंहभद्र
cmpdi
सिंहभद्र

Test Report

AMBIENT AIR QUALITY DATA

Area :

Bharatpur

(Compliance Station)

Project :

Bharatpur OCP

(conc. in $\mu\text{g}/\text{cu.m.}$)

Date of Sampling	Monitoring Station	SPM	PM10	PM2.5	SO2	NOx	CO (mg/m3)	Dust Generating Source(DGS)	Distance from DGS
03-Jan-26	Near Regional Store	289	176	72	19.08	31.51	-	Mining Activities	About 500m
03-Jan-26	North-West Point of the Mine	278	174	69	20.43	32.94	-	Domestic & Mining Activities	About 500m
03-Jan-26	Near ETP/Workshop	253	148	65	16.56	30.76	-	Mining Activities & Coal Stock	Above 500m
21-Jan-26	Near Regional Store	279	176	68	20.09	23.94	-	Mining Activities	About 500m
21-Jan-26	North-West Point of the Mine	255	167	66	18.66	30.58	-	Domestic & Mining Activities	About 500m
21-Jan-26	Near ETP/Workshop	256	171	66	22.77	40.45	-	Mining Activities & Coal Stock	Above 500m

for the same
Authorized Signatory
CMPDI, RI-VII, LAB
BHUBANESWAR

Jasmati

MoEF Standards Notification dated 25th September, 2000

800	300		120	120	02/8 (Hours)
-----	-----	--	-----	-----	--------------



Test Report

AMBIENT AIR QUALITY DATA

Area :

Bharatpur

(Reference Station)

Project :

Bharatpur OCP

(conc. in $\mu\text{g}/\text{cu.m.}$)

Date of Sampling	Monitoring Station	SPM	PM10	PM2.5	SO2	NOx	Dust Generating Source(DGS)	Distance from DGS
01-Jan-26	East of the Mine, Natedi Village (Reported Only)	198	85	47	19.66	34.38	Coal Transportation Road	About 2km
02-Jan-26	East of the Mine, Natedi Village (Reported Only)	224	80	43	14.54	25.51	Coal Transportation Road	About 2km
05-Jan-26	Kalinga Colony	196	85	47	18.51	36.53	Mining allied activities	About 500m
05-Jan-26	Karnapur Village	197	78	44	19.08	29.94	Anthropogenic Activities, Local Road	About 2km
05-Jan-26	Near Joragdia Village	248	93	54	14.14	34.51	Transportation, Domestic Cooking	About 1km
05-Jan-26	Khajuria Village	207	81	48	22.48	39.39	Mining Activities	About 1 KM
06-Jan-26	Karnapur Village	186	71	42	14.14	33.01	Anthropogenic Activities, Local Road	About 2km
06-Jan-26	Kalinga Colony	203	87	48	17.73	28.65	Mining allied activities	About 500m
06-Jan-26	Near Joragdia Village	233	89	50	14.14	27.76	Transportation, Domestic Cooking	About 1km
06-Jan-26	Khajuria Village	204	83	46	19.93	22.85	Mining Activities	About 1 KM
08-Jan-26	East of the Mine, Natedi Village (Reported Only)	199	86	46	17.41	35.66	Coal Transportation Road	About 2km
09-Jan-26	East of the Mine, Natedi Village (Reported Only)	229	89	50	13.11	20.05	Coal Transportation Road	About 2km
12-Jan-26	Near Joragdia Village	239	92	51	16.07	34.00	Transportation, Domestic Cooking	About 1km
12-Jan-26	Khajuria Village	229	92	53	24.60	30.72	Mining Activities	About 1 KM
12-Jan-26	Karnapur Village	210	83	49	23.66	43.95	Anthropogenic Activities, Local Road	About 2km
12-Jan-26	Kalinga Colony	188	80	44	15.81	35.81	Mining allied activities	About 500m
13-Jan-26	Khajuria Village	213	88	50	15.04	33.66	Mining Activities	About 1 KM

100	80	80	80
-----	----	----	----

Authorized Signatory
 CMPDI, RI-VII, LAB
 RHUBANESWAR

Janaki

Project :

Bharatpur OCP

(conc. in $\mu\text{g}/\text{cu.m.}$)

Date of Sampling	Monitoring Station	SPM	PM10	PM2.5	SO2	NOx	Dust Generating Source(DGS)	Distance from DGS
13-Jan-26	Near Joragdia Village	192	82	45	15.69	33.88	Transportation, Domestic Cooking	About 1km
13-Jan-26	Kalinga Colony	223	95	54	21.20	32.94	Mining allied activities	About 500m
13-Jan-26	Karnapur Village	216	88	51	17.77	33.01	Anthropogenic Activities, Local Road	About 2km
16-Jan-26	East of the Mine, Natedi Village (Reported Only)	198	79	44	14.42	33.72	Coal Transportation Road	About 2km
17-Jan-26	East of the Mine, Natedi Village (Reported Only)	213	86	49	12.95	35.49	Coal Transportation Road	About 2km
19-Jan-26	Karnapur Village	178	71	39	22.32	23.11	Anthropogenic Activities, Local Road	About 2km
19-Jan-26	Near Joragdia Village	198	83	46	15.69	21.96	Transportation, Domestic Cooking	About 1km
19-Jan-26	Khajuria Village	196	82	47	19.20	33.84	Mining Activities	About 1 KM
19-Jan-26	Kalinga Colony	194	77	42	20.53	23.11	Mining allied activities	About 500m
20-Jan-26	Near Joragdia Village	190	78	44	18.75	30.54	Transportation, Domestic Cooking	About 1km
20-Jan-26	Khajuria Village	205	76	42	19.64	33.84	Mining Activities	About 1 KM
20-Jan-26	Karnapur Village	209	85	47	19.93	25.09	Anthropogenic Activities, Local Road	About 2km
20-Jan-26	Kalinga Colony	217	95	51	12.72	21.17	Mining allied activities	About 500m
23-Jan-26	East of the Mine, Natedi Village (Reported Only)	226	88	51	22.77	21.46	Coal Transportation Road	About 2km
24-Jan-26	East of the Mine, Natedi Village (Reported Only)	203	84	48	19.20	31.37	Coal Transportation Road	About 2km
27-Jan-26	Kalinga Colony	201	76	44	22.05	18.82	Mining allied activities	About 500m
27-Jan-26	Khajuria Village	210	85	48	19.64	37.97	Mining Activities	About 1 KM
27-Jan-26	Near Joragdia Village	214	89	50	18.24	27.45	Transportation, Domestic Cooking	About 1km
27-Jan-26	Karnapur Village	191	80	44	15.69	36.86	Anthropogenic Activities, Local Road	About 2km

*NAQS,2009

100

60

30

80

T. K. S. S. S.
Authorised Signatory,
CMPDI, RI-VII, LAB
CHIDAMBARAM

J. S. S.

Project :

Bharatpur OCP

(conc. in $\mu\text{g}/\text{cu.m.}$)

Date of Sampling	Monitoring Station	SPM	PM10	PM2.5	SO2	NOx	Dust Generating Source(DGS)	Distance from DGS
28-Jan-26	Kalinga Colony	205	84	48	21.63	20.39	Mining allied activities	About 500m
28-Jan-26	Near Joragdia Village	204	85	48	16.54	25.88	Transportation, Domestic Cooking	About 1km
28-Jan-26	Karnapur Village	184	73	40	13.57	35.29	Anthropogenic Activities, Local Road	About 2km
28-Jan-26	Khajuria Village	219	90	49	12.50	25.59	Mining Activities	About 1 KM
30-Jan-26	East of the Mine, Natedi Village (Reported Only)	197	79	44	19.08	30.58	Coal Transportation Road	About 2km
31-Jan-26	East of the Mine, Natedi Village (Reported Only)	206	86	49	20.53	24.76	Coal Transportation Road	About 2km

Fathma
 Authorised Signatory
 CMPDI, RI-VII, LAB
 BHUBANESWAR

Jasmit

1/14/25, 2009		100	80	80	80
---------------	--	-----	----	----	----

AMBIENT AIR QUALITY DATA (NAAQS PARAMETER)
Area :
Bharatpur
Project :
Bharatpur OCP

Date of Sampling	Monitoring Station	Ammonia (NH ₃)	Ozone (O ₃)	Lead (Pb)	Arsenic (As)	Nickel (Ni)	CO	Benzo(a)Pyrene	Benzene
		(µg/m ³)	(µg/m ³)	(µg/m ³)	(ng/m ³)	(ng/m ³)	(mg/m ³)	(ng/m ³)	(µg/m ³)
01-Jan-26	East of the Mine, Natedi Village (Reported Only)	<20.0	22.87	<0.1	<1.0	<1.0	1.1	BQL(QL)=0.7	BQL
02-Jan-26	East of the Mine, Natedi Village (Reported Only)	<20.0	27.78	<0.1	<1.0	<1.0	1.1	BQL(QL)=0.7	BQL
05-Jan-26	Kalinga Colony	<20.0	15.98	<0.1	<1.0	<1.0	1.0	BQL(QL)=0.7	BQL
05-Jan-26	Near Joragdia Village	<20.0	11.55	<0.1	<1.0	<1.0	1.6	BQL(QL)=0.7	BQL
05-Jan-26	Karnapur Village	<20.0	14.50	<0.1	<1.0	<1.0	1.1	BQL(QL)=0.7	BQL
05-Jan-26	Khajuria Village	<20.0	26.05	<0.1	<1.0	<1.0	1.6	BQL(QL)=0.7	BQL
06-Jan-26	Near Joragdia Village	<20.0	16.97	<0.1	<1.0	<1.0	1.0	BQL(QL)=0.7	BQL
06-Jan-26	Kalinga Colony	<20.0	15.48	<0.1	<1.0	<1.0	1.5	BQL(QL)=0.7	BQL
06-Jan-26	Karnapur Village	<20.0	18.43	<0.1	<1.0	<1.0	1.3	BQL(QL)=0.7	BQL
06-Jan-26	Khajuria Village	<20.0	26.55	<0.1	<1.0	<1.0	1.5	BQL(QL)=0.7	BQL
08-Jan-26	East of the Mine, Natedi Village (Reported Only)	<20.0	26.80	<0.1	<1.0	<1.0	1.1	BQL(QL)=0.7	BQL
09-Jan-26	East of the Mine, Natedi Village (Reported Only)	<20.0	21.38	<0.1	<1.0	<1.0	1.0	BQL(QL)=0.7	BQL
12-Jan-26	Karnapur Village	<20.0	12.53	<0.1	<1.0	<1.0	1.4	BQL(QL)=0.7	BQL
12-Jan-26	Khajuria Village	<20.0	21.13	<0.1	<1.0	<1.0	1.2	BQL(QL)=0.7	BQL
12-Jan-26	Near Joragdia Village	<20.0	27.53	<0.1	<1.0	<1.0	1.7	BQL(QL)=0.7	BQL
12-Jan-26	Kalinga Colony	<20.0	11.07	<0.1	<1.0	<1.0	1.7	BQL(QL)=0.7	BQL
13-Jan-26	Khajuria Village	<20.0	12.53	<0.1	<1.0	<1.0	1.2	BQL(QL)=0.7	BQL
13-Jan-26	Karnapur Village	<20.0	11.80	<0.1	<1.0	<1.0	1.2	BQL(QL)=0.7	BQL
13-Jan-26	Kalinga Colony	<20.0	26.30	<0.1	<1.0	<1.0	1.7	BQL(QL)=0.7	BQL
13-Jan-26	Near Joragdia Village	<20.0	21.38	<0.1	<1.0	<1.0	1.1	BQL(QL)=0.7	BQL
16-Jan-26	East of the Mine, Natedi Village (Reported Only)	<20.0	12.05	<0.1	<1.0	<1.0	1.1	BQL(QL)=0.7	BQL
17-Jan-26	East of the Mine, Natedi Village (Reported Only)	<20.0	19.92	<0.1	<1.0	<1.0	1.6	BQL(QL)=0.7	BQL
19-Jan-26	Near Joragdia Village	<20.0	25.82	<0.1	<1.0	<1.0	1.3	BQL(QL)=0.7	BQL
19-Jan-26	Karnapur Village	<20.0	21.13	<0.1	<1.0	<1.0	1.1	BQL(QL)=0.7	BQL

Standard	400(24hrs)	180(ho)	1.0(24h)	6.0(An)	20(An)	02(8hou)	01(annual)	05(annual)
----------	------------	---------	----------	---------	--------	----------	------------	------------

Project :

Bharatpur OCP

Date of Sampling	Monitoring Station	Ammonia(NH ₃)	Ozone(O ₃)	Lead(Pb)	Arsenic(As)	Nickel(Ni)	CO	Benzo(a)Pyrene	Benzene
		(µg/m ³)	(µg/m ³)	(µg/m ³)	(ng/m ³)	(ng/m ³)	(mg/m ³)	(ng/m ³)	(µg/m ³)
19-Jan-26	Khajuria Village	<20.0	14.02	<0.1	<1.0	<1.0	1.4	BQL(QL)=0.7	BQL
19-Jan-26	Kalinga Colony	<20.0	11.30	<0.1	<1.0	<1.0	1.0	BQL(QL)=0.7	BQL
20-Jan-26	Karnapur Village	<20.0	22.62	<0.1	<1.0	<1.0	1.1	BQL(QL)=0.7	BQL
20-Jan-26	Khajuria Village	<20.0	13.77	<0.1	<1.0	<1.0	1.3	BQL(QL)=0.7	BQL
20-Jan-26	Near Joragdia Village	<20.0	26.55	<0.1	<1.0	<1.0	1.2	BQL(QL)=0.7	BQL
20-Jan-26	Kalinga Colony	<20.0	20.40	<0.1	<1.0	<1.0	1.0	BQL(QL)=0.7	BQL
23-Jan-26	East of the Mine, Natedi Village (Reported Only)	<20.0	19.42	<0.1	<1.0	<1.0	1.5	BQL(QL)=0.7	BQL
24-Jan-26	East of the Mine, Natedi Village (Reported Only)	<20.0	13.27	<0.1	<1.0	<1.0	1.2	BQL(QL)=0.7	BQL
27-Jan-26	Kalings Colony	<20.0	27.28	<0.1	<1.0	<1.0	1.2	BQL(QL)=0.7	BQL
27-Jan-26	Khajuria Village	<20.0	11.30	<0.1	<1.0	<1.0	1.5	BQL(QL)=0.7	BQL
27-Jan-26	Karnapur Village	<20.0	28.27	<0.1	<1.0	<1.0	1.2	BQL(QL)=0.7	BQL
27-Jan-26	Near Joragdia Village	<20.0	19.92	<0.1	<1.0	<1.0	1.2	BQL(QL)=0.7	BQL
28-Jan-26	Kalinga Colony	<20.0	20.15	<0.1	<1.0	<1.0	1.1	BQL(QL)=0.7	BQL
28-Jan-26	Karnapur Village	<20.0	21.63	<0.1	<1.0	<1.0	1.6	BQL(QL)=0.7	BQL
28-Jan-26	Near Joragdia Village	<20.0	18.93	<0.1	<1.0	<1.0	1.1	BQL(QL)=0.7	BQL
28-Jan-26	Khajuria Village	<20.0	25.07	<0.1	<1.0	<1.0	1.0	BQL(QL)=0.7	BQL
30-Jan-26	East of the Mine, Natedi Village (Reported Only)	<20.0	18.18	<0.1	<1.0	<1.0	1.3	BQL(QL)=0.7	BQL
31-Jan-26	East of the Mine, Natedi Village (Reported Only)	<20.0	22.12	<0.1	<1.0	<1.0	1.4	BQL(QL)=0.7	BQL

Standard	400(24hrs)	180(hrs)	1.0(24hrs)	6.0(Annual)	20(Annual)	02(8hrs)	01(annual)	05(annual)
----------	------------	----------	------------	-------------	------------	----------	------------	------------


 Authorised Signatory
 CMPDI, RI-VII, LAB
 RHIRANESWAR





ଶିଳ୍ପାବଳୀ ଲାବ
 ଲେବଲ୍
cmptdi
 ଭୁବନେଶ୍ୱର

TABLE-

NOISE LEVEL MONITORING DATA

AREA :

Bharatpur

PROJECT :

Bharatpur OCP

DATE OF SAMPLING	STATION	Noise Level Measurement in Leq dB(A)	
		DAY	NIGHT
14-Jan-26	North West Point of the Mine	64.7	56.2
14-Jan-26	Near Regional Store	66.8	55.2
14-Jan-26	Near Wokshop	65.9	55.2
14-Jan-26	Kalinga Colony	52.1	38.7
15-Jan-26	Natedi Village (Reported)	46.7	36.1
29-Jan-26	Natedi Village (Reported)	46.7	36.7
30-Jan-26	North West Point of the Mine	68.7	51.3
30-Jan-26	Near Regional Store	65.1	50.2
30-Jan-26	Near Wokshop	70.3	50.7
30-Jan-26	Kalinga Colony	47.3	38.2

MoEF Standard Notification dated 25th September, 2000	6.00 AM -10.00 PM Leq 75dB(A) (Industrial)	10.00 PM -6.00 AM Leq 70dB(A) (Industrial)
MoEF Standard Notification dated 25th September, 2000	6.00 AM -10.00 PM Leq 55dB(A) (Residential)	10.00 PM -6.00 AM Leq 45dB(A) (Residential)
MoEF Standard Notification dated 25th September, 2000	6.00 AM -10.00 PM Leq 65dB(A) (Commercial)	10.00 PM -6.00 AM Leq 55dB(A) (Commercial)
MoEF Standard Notification dated 25th September, 2000	6.00 AM -10.00 PM Leq 50dB(A) (Silence Zone)	10.00 PM -6.00 AM Leq 40dB(A) (Silence Zone)

Authorised Signatory
 CEMPI, R-VII, LAB
 BHUBANESWAR

Janaki


EFFLUENT QUALITY DATA

Area :

Bharatpur

(All dimensions are in mg/l unless otherwise stated except pH)

Project :

Bharatpur OCP

Date of Sampling	Sampling Station	pH	Oil & Grease	TSS	COD	BOD	Remarks
15-Jan-26	Mine Sump Water - Main Sump	4.02	<4.0	26	20	-	
15-Jan-26	Mine Sump Water - Old Quarry Sump	6.79	<4.0	22	12	-	
15-Jan-26	Rakas Quarry Sump	3.76	-	-	-	-	
15-Jan-26	Workshop ETP Clear Water Tank	7.33	<4.0	32	28	-	
15-Jan-26	Workshop Inlet	7.30	<4.0	28	35	-	
31-Jan-26	Workshop ETP Clear Water Tank	7.20	<4.0	36	40	-	
31-Jan-26	Workshop Inlet	7.09	<4.0	20	28	-	

 Taitwadi
 Authorised Signatory
 CMPDI, RI-VII, LAB
 BHUBANESWAR

Jaiswal

 MoEF Standard Notification dated 25th September, 2000
 and MoEF Schedule VI, General standard for discharge
 of Environmental Pollutants Part A: Effluents

5.5-9.0 10 100 250 30



सीएमपीडीआई
1986-1988
cmpdi
एन.ए.ए.ए.

Test Report

EFFLUENT QUALITY DATA

Area :

Bharatpur

(All dimensions are in mg/l unless otherwise stated except pH)

Project :

Bharatpur OCP

Date of Sampling	Sampling Station	pH	Oil & Grease	TSS	COD	BOD	MPN/100mL
15-Jan-26	STP INLET	7.06	-	28	-	2.8	240
15-Jan-26	STP Outlet (PH,TSS,MPN,BOD)	7.27	-	28	-	2.3	210
31-Jan-26	STP INLET	7.20	-	28	-	3.7	170
31-Jan-26	STP Outlet (PH,TSS,MPN,BOD)	7.17	-	22	-	3.0	110

Intendant
Authorised Signatory
CMPDI, RI-VII, LAB
BHUBANESWAR

Jasmat

G.S.R. 1265(E) Effluent discharge standards (applicable to all mode of disposal), Sewage Treatment Plants (STPs)	6.5-9.0	-	<100	-	30	<1000
--	---------	---	------	---	----	-------



सीएमपीडीआई
रिजी रल
cmpdi
Water

Drinking Water Quality Data Bharatpur Area

Project / OCP	Bharatpur OCP	Indian Drinking Standards (IS-10500):2012	
		Acceptable	Permissible
Monitoring Station	Time Office,BOCP		
Date of Sampling	15-Jan-2026		
Colour(Hazen)	2	5	15
Odour	Agreeable	Agreeable	Agreeable
Taste	Agreeable	Agreeable	Agreeable
Turbidity(NTU)	1.2	1	5
pH	6.58	6.5-8.5	No relaxation
Total Alkalinity(mg/L)	33.76	200	600
Chloride(mg/L)	17.86	250	1000
Sulphate(mg/L)	30.14	200	400
Nitrate(mg/L)	3.37	45	No relaxation
Total Hardness (Ca CO ₃)(mg/L)	52.41	200	600
Calcium(mg/L)	16.00	75	200
Fluoride(mg/L)	0.27	1	1.5
Total Dissolve Solid(mg/L)	111	500	2000
Copper(mg/L)	<0.03	0.05	1.5
Manganese(mg/L)	0.16	0.1	0.3
Iron(mg/L)	<0.1	1.0	No relaxation
Zinc(mg/L)	0.08	5	15
Lead(mg/L)	<0.005	0.01	No relaxation
Cadmium(mg/L)	<0.001	0.003	No relaxation
Total Chromium (mg/L)	<0.01	0.05	No relaxation
Arsenic(mg/L)	<0.005	0.01	No relaxation
Boron(mg/L)	<0.2	0.5	2.4

Kulkarni
Authorised Signatory
CMPDI, RI-VII, LAB
BHUBANESWAR

Jaswant



सीएमपीडीआई
मिने वल
cmpdi
Miniratna

Drinking Water Quality Data Bharatpur Area

Project / OCP	Bharatpur OCP	Indian Drinking Standards (IS-10500):2012	
Monitoring Station	Time Office,BOCP	Acceptable	Permissible
Date of Sampling	15-Jan-2026	Acceptable	Permissible
Selenium(mg/L)	<0.005	0.01	No relaxation
Sodium(mg/L)	5.94	-	-
Potassium(mg/L)	1.53	-	-
Phenolics(mg/L)	<0.001	0.001	0.002
Residual Free Chlorine(mg/L)	<0.2	0.2	1.0
MPN (Index/100 ml)	Not Detected	-	-

Tatavai
Authorised Signatory
CMPDI, RI-VII, LAS
BHUSAJESWAR

Jasmat

Bharatpur OCP

Legend
Monitoring Station

Khajuria Village
Near Joragadia Village

North West Point of the Mine

Near ETP Workshop

Near Regional Store

Natedi Village

Kalinga Colony

Karnapur Village

Google Earth
© 2011



**Environmental Monitoring Report
For
January-2026**

**Project: Bhubaneswari OCP
Area: Bhubaneswari
Coalfield: Talcher**



Mahanadi Coalfields Limited



Central Mine Planning & Design Institute Ltd.
(A Subsidiary of Coal India Ltd.)

Regional Institute-VII, Samantpuri, P.O : RRL, Bhubaneswar-751013 (Odisha)
[Assistance from Environment Division, CMPDI(HQs), Ranchi]

The test report shall not be reproduced in part or full without written approval of the competent authority



राष्ट्रीय पर्यावरण
अनुसंधान संस्थान
CMPDI
भारत सरकार

Test Report

AMBIENT AIR QUALITY DATA

Area :

Bhubaneswari

(Compliance Station)

Project :

Bhubaneswari OCP

(conc. in $\mu\text{g}/\text{cu.m.}$)

Date of Sampling	Monitoring Station	SPM	PM10	PM2.5	SO2	NOx	CO (mg/m ³)	Dust Generating Source(DGS)	Distance from DGS
03-Jan-26	B.C.M.L. Workshop	265	160	68	18.89	25.07	-	Mining activities, O.B Dump yard	About 400 to 500m
03-Jan-26	Silo Substation Office	271	154	67	20.60	23.26	-	Mining Activities	About 200m
21-Jan-26	B.C.M.L. Workshop	205	81	46	24.60	36.86	-	Mining activities, O.B Dump yard	About 400 to 500m
21-Jan-26	Silo Substation Office	259	153	66	14.84	31.37	-	Mining Activities	About 200m

T. Hanuik
Authorized Signatory
CMPDI, RI-VII, LAB
BHUBANESWAR

Janata

MoEF Standards Notification dated 25th September, 2000

500	250		120	120	62(8 Hours)
-----	-----	--	-----	-----	-------------

Test Report



AMBIENT AIR QUALITY DATA

Area :

Bhubaneswari

(Reference Station)

Project :

Bhubaneswari OCP

(conc. in $\mu\text{g}/\text{cu.m.}$)

Date of Sampling	Monitoring Station	SPM	PM10	PM2.5	SO2	NOx	Dust Generating Source(DGS)	Distance from DGS
05-Jan-26	Naraharipur Village	214	88	49	21.20	31.51	Mining Activity	About 1km
05-Jan-26	Kandhal Village (Reported Only)	223	87	49	21.41	30.76	Transportation	About 1500m
06-Jan-26	Kandhal Village (Reported Only)	193	77	43	21.59	25.07	Transportation	About 1500m
06-Jan-26	Naraharipur Village	206	78	44	15.27	27.57	Mining Activity	About 1km
12-Jan-26	Naraharipur Village	234	92	50	16.16	28.51	Mining Activity	About 1km
12-Jan-26	Kandhal Village (Reported Only)	205	85	47	25.92	46.39	Transportation	About 1500m
13-Jan-26	Kandhal Village (Reported Only)	198	81	44	16.54	33.09	Transportation	About 1500m
13-Jan-26	Naraharipur Village	241	94	53	23.21	37.32	Mining Activity	About 1km
19-Jan-26	Naraharipur Village	216	88	49	14.14	37.47	Mining Activity	About 1km
19-Jan-26	Kandhal Village (Reported Only)	216	87	49	18.38	36.59	Transportation	About 1500m
20-Jan-26	Kandhal Village (Reported Only)	204	82	45	15.62	28.89	Transportation	About 1500m
20-Jan-26	Naraharipur Village	195	78	42	13.84	41.27	Mining Activity	About 1km
27-Jan-26	Kandhal Village (Reported Only)	216	85	46	16.96	24.76	Transportation	About 1500m
27-Jan-26	Naraharipur Village	204	84	46	19.93	39.21	Mining Activity	About 1km
28-Jan-26	Naraharipur Village	197	77	43	24.50	33.98	Mining Activity	About 1km
28-Jan-26	Kandhal Village (Reported Only)	210	80	42	22.32	28.89	Transportation	About 1500m

Jaffar
 Authorised Signatory
 CMPDI, Bhubaneswar
 BHUBANESWAR

Jamuna

AMBIENT AIR QUALITY DATA (NAAQS PARAMETER)

Area :

Bhubaneswari

Project :

Bhubaneswari OCP

Date of Sampling	Monitoring Station	Ammonia (NH ₃)	Ozone (O ₃)	Lead (Pb)	Arsenic (As)	Nickel (Ni)	CO	Benzo(a)Pyrene	Benzene
		(µg/m ³)	(µg/m ³)	(µg/m ³)	(ng/m ³)	(ng/m ³)	(mg/m ³)	(ng/m ³)	(µg/m ³)
05-Jan-26	Kandhal Village (Reported Only)	<20.0	18.68	<0.1	<1.0	<1.0	0.5	BQL(QL)=0.7	BQL
05-Jan-26	Naraharipur Village	<20.0	25.82	<0.1	<1.0	<1.0	1.1	BQL(QL)=0.7	BQL
06-Jan-26	Naraharipur Village	<20.0	24.58	<0.1	<1.0	<1.0	1.2	BQL(QL)=0.7	BQL
06-Jan-26	Kandhal Village (Reported Only)	<20.0	22.62	<0.1	<1.0	<1.0	0.8	BQL(QL)=0.7	BQL
12-Jan-26	Kandhal Village (Reported Only)	<20.0	18.68	<0.1	<1.0	<1.0	0.8	BQL(QL)=0.7	BQL
12-Jan-26	Naraharipur Village	<20.0	22.12	<0.1	<1.0	<1.0	1.3	BQL(QL)=0.7	BQL
13-Jan-26	Naraharipur Village	<20.0	25.32	<0.1	<1.0	<1.0	1.1	BQL(QL)=0.7	BQL
13-Jan-26	Kandhal Village (Reported Only)	<20.0	17.70	<0.1	<1.0	<1.0	0.5	BQL(QL)=0.7	BQL
19-Jan-26	Kandhal Village (Reported Only)	<20.0	15.73	<0.1	<1.0	<1.0	0.8	BQL(QL)=0.7	BQL
19-Jan-26	Naraharipur Village	<20.0	27.28	<0.1	<1.0	<1.0	1.7	BQL(QL)=0.7	BQL
20-Jan-26	Naraharipur Village	<20.0	27.03	<0.1	<1.0	<1.0	1.5	BQL(QL)=0.7	BQL
20-Jan-26	Kandhal Village (Reported Only)	<20.0	15.73	<0.1	<1.0	<1.0	1.2	BQL(QL)=0.7	BQL
27-Jan-26	Naraharipur Village	<20.0	15.00	<0.1	<1.0	<1.0	1.2	BQL(QL)=0.7	BQL
27-Jan-26	Kandhal Village (Reported Only)	<20.0	24.33	<0.1	<1.0	<1.0	0.8	BQL(QL)=0.7	BQL
28-Jan-26	Kandhal Village (Reported Only)	<20.0	12.05	<0.1	<1.0	<1.0	0.5	BQL(QL)=0.7	BQL
28-Jan-26	Naraharipur Village	<20.0	15.23	<0.1	<1.0	<1.0	1.1	BQL(QL)=0.7	BQL

Standard	400(24hrs)	180(hour)	1.0(24hrs)	6.0(Annual)	20(Annual)	02(8hrs)	01(annual)	05(annual)
----------	------------	-----------	------------	-------------	------------	----------	------------	------------

Janak



सीएनपीडी
INDIA
cmpdi
1986

TABLE-

NOISE LEVEL MONITORING DATA

AREA :

Bhubaneswari

PROJECT :

Bhubaneswari OCP

DATE OF SAMPLING	STATION	Noise Level Measurement in Leq dB(A)	
		DAY	NIGHT
14-Jan-26	Naraharipur Village	50.3	39.1
14-Jan-26	Silo Substaion Office	67.8	60.1
14-Jan-26	BCML Workshop	70.7	57.9
15-Jan-26	Kandhal Village (Reported)	50.7	39.2
29-Jan-26	Kandhal Village (Reported)	49.2	38.7
30-Jan-26	Naraharipur Village	44.3	37.9
30-Jan-26	Silo Substaion Office	71.2	57.0
30-Jan-26	BCML Workshop	65.3	53.1

MoEF Standard Notification dated 25th September, 2000	6.00 AM -10.00 PM Leq 75dB(A) (Industrial)	10.00 PM -6.00 AM Leq 70dB(A) (Industrial)
MoEF Standard Notification dated 25th September, 2000	6.00 AM -10.00 PM Leq 55dB(A) (Residential)	10.00 PM -6.00 AM Leq 45dB(A) (Residential)
MoEF Standard Notification dated 25th September, 2000	6.00 AM -10.00 PM Leq 65dB(A) (Commercial)	10.00 PM -6.00 AM Leq 55dB(A) (Commercial)
MoEF Standard Notification dated 25th September, 2000	6.00 AM -10.00 PM Leq 50dB(A) (Silence Zone)	10.00 PM -6.00 AM Leq 40dB(A) (Silence Zone)

T. P. S. S. S.
Authorised Signatory
CMPDI, RI-VII, LAB
BHUBANESWAR

Janak



सीएमपीडीआई
विनी रत्न
cmpdi
Mini Ratna

Drinking Water Quality Data Bhubaneswari Area

Project / OCP	Bhubaneswari OCP			Indian Drinking Standards (IS-10500):2012	
	Monitoring Station	Workshop BCML	Deulbera Office, BCML		
Date of Sampling	15-Jan-2026	15-Jan-2026	15-Jan-2026	Acceptable	Permissible
Colour(Hazen)	2	1	3	5	15
Odour	Agreeable	Agreeable	Agreeable	Agreeable	Agreeable
Taste	Agreeable	Agreeable	Agreeable	Agreeable	Agreeable
Turbidity(NTU)	5	2.7	1.6	1	5
pH	6.54	6.99	7.28	6.5-8.5	No relaxation
Total Alkalinity(mg/L)	181.46	135.04	50.46	200	600
Chloride(mg/L)	23.82	25.80	13.89	250	1000
Sulphate(mg/L)	130.96	122.88	27.26	200	400
Nitrate(mg/L)	9.75	9.25	0.80	45	No relaxation
Total Hardness (Ca CO ₃)(mg/L)	197.56	185.47	60.48	200	600
Calcium(mg/L)	44.80	48	17.60	75	200
Fluoride(mg/L)	0.64	0.69	0.37	1	1.5
Total Dissolve Solid(mg/L)	426	377	121	500	2000
Copper(mg/L)	<0.03	<0.03	<0.03	0.05	1.5
Manganese(mg/L)	<0.04	<0.04	<0.04	0.1	0.3
Iron(mg/L)	<0.1	<0.1	<0.1	1.0	No relaxation
Zinc(mg/L)	<0.04	<0.04	<0.04	5	15
Lead(mg/L)	<0.005	<0.005	<0.005	0.01	No relaxation
Cadmium(mg/L)	<0.001	<0.001	<0.001	0.003	No relaxation
Total Chromium (mg/L)	<0.01	<0.01	<0.01	0.05	No relaxation
Arsenic(mg/L)	<0.005	<0.005	<0.005	0.01	No relaxation
Boron(mg/L)	<0.2	<0.2	<0.2	0.5	2.4

T. Jaiswal
Authorized Signatory
CMPDI, RI-VII, LAB
BHUBANESWAR

Jaiswal



सीएनपीडीआई
विश्वे स्त
cmpdi
Mini Ratna

Drinking Water Quality Data Bhubaneswari Area

Project / OCP	Bhubaneswari OCP			Indian Drinking Standards (IS-10500):2012	
	Monitoring Station	Workshop BCML	Deulbera Office, BCML		
Date of Sampling	15-Jan-2026	15-Jan-2026	15-Jan-2026	Acceptable	Permissible
Selenium(mg/L)	<0.005	<0.005	<0.005	0.01	No relaxation
Sodium(mg/L)	11.36	5.04	11.11	-	-
Potassium(mg/L)	2.93	2.95	1.98	-	-
Phenolics(mg/L)	<0.001	<0.001	<0.001	0.001	0.002
Residual Free Chlorine(mg/L)	<0.2	<0.2	<0.2	0.2	1.0
MPN (Index/100 ml)	Not Detected	Not Detected	Not Detected	-	-

Authorised Signatory
CMPDI, RI-VII, LAB
BHUBANESWAR

Jasmati

Bhubaneswari OCP



Legend

● Monitoring Stations

**Environmental Monitoring Report
For
January-2026**

**Project: Lingaraj OCP
Area: Lingaraj
Coalfield: Talcher**



Mahanadi Coalfields Limited



Central Mine Planning & Design Institute Ltd.
(A Subsidiary of Coal India Ltd.)

Regional Institute-VII, Samantpuri, P.O : RRL, Bhubaneswar-751013 (Odisha)
[Assistance from Environment Division, CMPDI(HQs), Ranchi]

The test report shall not be reproduced in part or full without written approval of the competent authority



राज्यपीडीआई
RI-VII
CMPDI
राज्यपीडीआई

Test Report

AMBIENT AIR QUALITY DATA

Area :

Lingaraj

(Compliance Station)

Project :

Lingaraj OCP

(conc. in $\mu\text{g}/\text{cu.m.}$)

Date of Sampling	Monitoring Station	SPM	PM10	PM2.5	SO2	NOx	CO (mg/m ³)	Dust Generating Source(DGS)	Distance from DGS
03-Jan-26	GM Office Lingraj	278	155	69	19.39	30.01	0.7	Transportation	About 500m
03-Jan-26	Near Silo Conveyor Belt	253	149	68	14.65	25.07	0.5	Mining Operations	About 200m
21-Jan-26	GM Office Lingraj	260	153	68	14.73	24.76	0.5	Transportation	About 500m
21-Jan-26	Near Silo Conveyor Belt	256	157	65	11.87	21.96	0.6	Mining Operations	About 200m

J. Kanak
Authorised Signatory
CMPDI, RI-VII, LAB
BHUBANESWAR

Jamaal

As per Standards Notification dated 25th September, 2006

500	250		120	120	92(8 Hours)
-----	-----	--	-----	-----	-------------

AMBIENT AIR QUALITY DATA

Area :

Lingaraj

(Reference Station)

Project :

Lingaraj OCP

(conc. in $\mu\text{g}/\text{cu.m.}$)

Date of Sampling	Monitoring Station	SPM	PM10	PM2.5	SO2	NOx	Dust Generating Source(DGS)	Distance from DGS
05-Jan-26	Kandhal Village	223	87	49	21.41	30.76	Transportation	About 1500m
05-Jan-26	Lingaraj Township	234	91	52	22.36	37.24	Mining Activities, Transportation	About 500m
05-Jan-26	Balunga Khamar Village	205	87	49	18.98	34.51	Mining Activities, Transportation	About 500m
06-Jan-26	Balunga Khamar Village	238	94	55	20.60	33.01	Mining Activities, Transportation	About 500m
06-Jan-26	Kandhal Village	193	77	43	21.59	25.07	Transportation	About 1500m
06-Jan-26	Lingaraj Township	193	77	41	13.11	24.35	Mining Activities, Transportation	About 500m
12-Jan-26	Lingaraj Township	204	83	45	21.59	35.09	Mining Activities, Transportation	About 500m
12-Jan-26	Balunga Khamar Village	227	91	53	25.45	38.98	Mining Activities, Transportation	About 500m
12-Jan-26	Kandhal Village	205	85	47	25.92	46.39	Transportation	About 1500m
13-Jan-26	Balunga Khamar Village	206	83	47	23.75	27.57	Mining Activities, Transportation	About 500m
13-Jan-26	Kandhal Village	198	81	44	16.54	33.09	Transportation	About 1500m
13-Jan-26	Lingaraj Township	213	86	47	20.05	28.65	Mining Activities, Transportation	About 500m
19-Jan-26	Kandhal Village	216	87	49	18.38	36.59	Transportation	About 1500m
19-Jan-26	Lingaraj Township	234	94	51	20.36	22.74	Mining Activities, Transportation	About 500m
19-Jan-26	Balunga Khamar Village	218	91	50	18.85	31.37	Mining Activities, Transportation	About 500m
20-Jan-26	Balunga Khamar Village	190	79	43	25.03	19.60	Mining Activities, Transportation	About 500m
20-Jan-26	Kandhal Village	204	82	45	15.62	28.89	Transportation	About 1500m
20-Jan-26	Lingaraj Township	196	79	44	12.30	34.50	Mining Activities, Transportation	About 500m
27-Jan-26	Balunga Khamar Village	203	87	49	25.45	32.24	Mining Activities, Transportation	About 500m
27-Jan-26	Kandhal Village	216	85	46	16.96	24.76	Transportation	About 1500m

Project :

Lingaraj OCP

(conc. in $\mu\text{g}/\text{cu.m.}$)

Date of Sampling	Monitoring Station	SPM	PM10	PM2.5	SO2	NOx	Dust Generating Source(DGS)	Distance from DGS
27-Jan-26	Lingaraj Township	211	85	47	21.63	31.37	Mining Activities, Transportation	About 500m
28-Jan-26	Lingaraj Township	236	92	50	12.30	34.50	Mining Activities, Transportation	About 500m
28-Jan-26	Balunga Khamar Village	195	78	41	22.15	42.69	Mining Activities, Transportation	About 500m
28-Jan-26	Kandhal Village	210	80	42	22.32	28.89	Transportation	About 1500m

Jitendra
Authorised Signatory
CMPDI, RI-VII, LAB
BHUBANESWAR

Jitendra

744(25,2009)		100	80	80	80
--------------	--	-----	----	----	----

Test Report



सीएनपीडीआई
Cmpdi
LABORATORY

AMBIENT AIR QUALITY DATA (NAAQS PARAMETER)

Area :

Lingaraj

Project :

Lingaraj OCP

Date of Sampling	Monitoring Station	Ammonia (NH ₃)	Ozone (O ₃)	Lead (Pb)	Arsenic (As)	Nickel (Ni)	CO	Benzo(a)Pyrene	Benzene
		(µg/m ³)	(µg/m ³)	(µg/m ³)	(ng/m ³)	(ng/m ³)	(mg/m ³)	(ng/m ³)	(µg/m ³)
05-Jan-26	Lingaraj Township	<20.0	24.58	<0.1	<1.0	<1.0	1.4	BQL(QL)=0.7	BQL
05-Jan-26	Balunga Khamar Village	<20.0	24.08	<0.1	<1.0	<1.0	1.2	BQL(QL)=0.7	BQL
05-Jan-26	Kandhal Village	<20.0	18.68	<0.1	<1.0	<1.0	0.5	BQL(QL)=0.7	BQL
06-Jan-26	Kandhal Village	<20.0	22.62	<0.1	<1.0	<1.0	0.8	BQL(QL)=0.7	BQL
06-Jan-26	Lingaraj Township	<20.0	17.20	<0.1	<1.0	<1.0	1.3	BQL(QL)=0.7	BQL
06-Jan-26	Balunga Khamar Village	<20.0	16.22	<0.1	<1.0	<1.0	0.7	BQL(QL)=0.7	BQL
12-Jan-26	Balunga Khamar Village	<20.0	24.33	<0.1	<1.0	<1.0	1.1	BQL(QL)=0.7	BQL
12-Jan-26	Kandhal Village	<20.0	18.68	<0.1	<1.0	<1.0	0.8	BQL(QL)=0.7	BQL
12-Jan-26	Lingaraj Township	<20.0	15.00	<0.1	<1.0	<1.0	0.6	BQL(QL)=0.7	BQL
13-Jan-26	Kandhal Village	<20.0	17.70	<0.1	<1.0	<1.0	0.5	BQL(QL)=0.7	BQL
13-Jan-26	Lingaraj Township	<20.0	24.83	<0.1	<1.0	<1.0	1.2	BQL(QL)=0.7	BQL
13-Jan-26	Balunga Khamar Village	<20.0	22.12	<0.1	<1.0	<1.0	0.6	BQL(QL)=0.7	BQL
19-Jan-26	Lingaraj Township	<20.0	27.28	<0.1	<1.0	<1.0	1.2	BQL(QL)=0.7	BQL
19-Jan-26	Balunga Khamar Village	<20.0	25.07	<0.1	<1.0	<1.0	0.9	BQL(QL)=0.7	BQL
19-Jan-26	Kandhal Village	<20.0	15.73	<0.1	<1.0	<1.0	0.8	BQL(QL)=0.7	BQL
20-Jan-26	Kandhal Village	<20.0	15.73	<0.1	<1.0	<1.0	1.2	BQL(QL)=0.7	BQL
20-Jan-26	Lingaraj Township	<20.0	13.27	<0.1	<1.0	<1.0	1.1	BQL(QL)=0.7	BQL
20-Jan-26	Balunga Khamar Village	<20.0	16.22	<0.1	<1.0	<1.0	1.4	BQL(QL)=0.7	BQL
27-Jan-26	Kandhal Village	<20.0	24.33	<0.1	<1.0	<1.0	0.8	BQL(QL)=0.7	BQL
27-Jan-26	Lingaraj Township	<20.0	17.20	<0.1	<1.0	<1.0	0.6	BQL(QL)=0.7	BQL
27-Jan-26	Balunga Khamar Village	<20.0	22.62	<0.1	<1.0	<1.0	0.5	BQL(QL)=0.7	BQL
28-Jan-26	Balunga Khamar Village	<20.0	12.05	<0.1	<1.0	<1.0	0.8	BQL(QL)=0.7	BQL
28-Jan-26	Kandhal Village	<20.0	12.05	<0.1	<1.0	<1.0	0.5	BQL(QL)=0.7	BQL
28-Jan-26	Lingaraj Township	<20.0	14.75	<0.1	<1.0	<1.0	1.4	BQL(QL)=0.7	BQL

Standard	400(24hrs)	180(hour)	1.0(24hrs)	6.0(Annual)	20(Annual)	02(8hours)	01(annual)	05(annual)
----------	------------	-----------	------------	-------------	------------	------------	------------	------------

Authorised Signatory
CMPDI, RI-VII, LAB
BHUBANESWAR

Jasmati



सीएनपीडीआई
RI-VII
cmpdi
LAB Bhubaneswar

TABLE--

NOISE LEVEL MONITORING DATA

AREA : **Lingaraj**

PROJECT :

Lingaraj OCP

DATE OF SAMPLING	STATION	Noise Level Measurement in Leq dB(A)	
		DAY	NIGHT
14-Jan-26	Near Silo Conveyor Belt	60.4	44.7
15-Jan-26	Lingaraj Township	46.3	38.7
15-Jan-26	Balunga Khamar Village	50.7	39.9
15-Jan-26	Kandhal Village	50.7	39.2
29-Jan-26	Lingaraj Township	52.7	39.3
29-Jan-26	Balunga Khamar Village	55.9	38.7
29-Jan-26	Kandhal Village	49.2	38.7
29-Jan-26	Near Silo Conveyor Belt	69.7	51.3

MoEF Standard Notification dated 25th September, 2000	6.00 AM -10.00 PM Leq 75dB(A) (Industrial)	10.00 PM -6.00 AM Leq 70dB(A) (Industrial)
MoEF Standard Notification dated 25th September, 2000	6.00 AM -10.00 PM Leq 55dB(A) (Residential)	10.00 PM -6.00 AM Leq 45dB(A) (Residential)
MoEF Standard Notification dated 25th September, 2000	6.00 AM -10.00 PM Leq 65dB(A) (Commercial)	10.00 PM -6.00 AM Leq 55dB(A) (Commercial)
MoEF Standard Notification dated 25th September, 2000	6.00 AM -10.00 PM Leq 50dB(A) (Silence Zone)	10.00 PM -6.00 AM Leq 40dB(A) (Silence Zone)

S. Kanak
Authorized Signatory
CMPDI, RI-VII, LAB
BHUBANESWAR

Jaswant


EFFLUENT QUALITY DATA

Area :

Lingaraj

(All dimensions are in mg/l unless otherwise stated except pH)

Project :

Lingaraj OCP

Date of Sampling	Sampling Station	pH	Oil & Grease	TSS	COD	BOD	Remarks
15-Jan-26	Clear Water Reservoir of ETP	7.07	<4.0	32	40	-	
15-Jan-26	Clear Water Reservoir of ETP Near Dumper Parking	6.90	<4.0	28	32	-	
15-Jan-26	Clear Water Reservoir of MDTP near Stock No. 17	7.70	<4.0	34	28	-	
15-Jan-26	Inlet of ETP Near Dumper Parking	6.51	<4.0	36	44	-	
15-Jan-26	Inlet of MDTP near Stock No. 17	7.69	<4.0	28	40	-	
15-Jan-26	Inlet of Workshop ETP	6.66	<4.0	38	48	-	
15-Jan-26	Mine Sump Water	7.70	<4.0	36	32	-	
31-Jan-26	Clear Water Reservoir of ETP	7.07	<4.0	32	40	-	
31-Jan-26	Clear Water Reservoir of ETP Near Dumper Parking	6.81	<4.0	18	20	-	
31-Jan-26	Inlet of ETP Near Dumper Parking	6.76	<4.0	20	24	-	
31-Jan-26	Inlet of Workshop ETP	6.85	<4.0	40	52	-	

 Kattumak
 Authorized Signatory
 CMPDI, RI-VII, LAS
 BHUBANESWAR

Jyoti

 MoEF Standard Notification dated 25th September, 2000
 and MoEF Schedule VI, General standard for discharge
 of Environmental Pollutants Part A: Effluents

5.5-9.0 10 100 250 30



सीएमपीडी
CMPDI
CENTRAL POLLUTION CONTROL BOARD

Test Report

EFFLUENT QUALITY DATA

Area :

Lingaraj

(All dimensions are in mg/l unless otherwise stated except pH)

Project :

Lingaraj OCP

Date of Sampling	Sampling Station	pH	Oil & Grease	TSS	COD	BOD	MPN/100mL
15-Jan-26	STP Inlet at Lingaraj Township	6.32	-	38	-	4.8	170
15-Jan-26	STP Outlet at Lingaraj Township	6.54	-	26	-	3.2	130
31-Jan-26	STP Inlet at Lingaraj Township	6.56	-	42	-	4.6	220
31-Jan-26	STP Outlet at Lingaraj Township	6.66	-	30	-	2.5	94

Authorized Signatory
CMPDI, RLVII, TAG
BHUBANESWAR

Jasmit

G.S.R. 1265(E) Effluent discharge standards (applicable to all mode of disposal), Sewage Treatment Plants (STPs)

6.5-9.0 - <100 - 30 <1000



सीएमपीडीआई
मिनी रात्रा
cmpdi
Mini Ratna

Drinking Water Quality Data Lingraj Area

Project / OCP Monitoring Station	Lingraj OCP GM Office, Lingraj Area	Indian Drinking Standards (IS-10500):2012	
		Acceptable	Permissible
Date of Sampling	15-Jan-2026		
Colour(Hazen)	3	5	15
Odour	Agreeable	Agreeable	Agreeable
Taste	Agreeable	Agreeable	Agreeable
Turbidity(NTU)	1.9	1	5
pH	6.81	6.5-8.5	No relaxation
Total Alkalinity(mg/L)	29.54	200	600
Chloride(mg/L)	23.82	250	1000
Sulphate(mg/L)	19.86	200	400
Nitrate(mg/L)	3.83	45	No relaxation
Total Hardness (Ca CO ₃)(mg/L)	48.38	200	600
Calcium(mg/L)	14.40	75	200
Fluoride(mg/L)	0.25	1	1.5
Total Dissolve Solid(mg/L)	101	500	2000
Copper(mg/L)	<0.03	0.05	1.5
Manganese(mg/L)	<0.04	0.1	0.3
Iron(mg/L)	<0.1	1.0	No relaxation
Zinc(mg/L)	<0.04	5	15
Lead(mg/L)	<0.005	0.01	No relaxation
Cadmium(mg/L)	<0.001	0.003	No relaxation
Total Chromium (mg/L)	<0.01	0.05	No relaxation
Arsenic(mg/L)	<0.005	0.01	No relaxation
Boron(mg/L)	<0.2	0.5	2.4

T. K. Sankar
Authorised Signatory
CMPDI, RI-VII, LAB
BHUBANESWAR

Jaswant



सीएमपीडीआई
मिनी लैब
cmpdi
Mini Lab

Drinking Water Quality Data Lingraj Area

Project / OCP	Lingraj OCP	Indian Drinking Standards (IS-10500):2012	
		Acceptable	Permissible
Monitoring Station	GM Office, Lingraj Area		
Date of Sampling	15-Jan-2026		
Selenium(mg/L)	<0.005	0.01	No relaxation
Sodium(mg/L)	9.65	-	-
Potassium(mg/L)	1.05	-	-
Phenolics(mg/L)	<0.001	0.001	0.002
Residual Free Chlorine(mg/L)	<0.2	0.2	1.0
MPN (Index/100 ml)	Not Detected	-	-

S. K. Mahapatra
Authorized Signatory
CMPDI, RI-VII, LAB
BHUBANESWAR

Janak

Lingraj OCP

Legend
Air Sampling Locations

Kandhal Village

Balunga village

GM Office Lingraj

Near Conveyor belt

Lingraj Township

Google Earth



**Environmental Monitoring Report
For
January-2026**

**Project: Kaniha OCP
Area: Kaniha
Coalfield: Talcher**



Mahanadi Coalfields Limited



Central Mine Planning & Design Institute Ltd.
(A Subsidiary of Coal India Ltd.)

Regional Institute-VII, Samantpuri, P.O : RRL, Bhubaneswar-751013 (Odisha)
[Assistance from Environment Division, CMPDI(HQs), Ranchi]

The test report shall not be reproduced in part or full without written approval of the competent authority



सौरभपोडी लैब
CMPDI
लैबोराटरी

Test Report

AMBIENT AIR QUALITY DATA

Area : **Kaniha** (Compliance Station)

Project : **Kaniha OCP** (conc. in $\mu\text{g}/\text{cu.m.}$)

Date of Sampling	Monitoring Station	SPM	PM10	PM2.5	SO2	NOx	CO (mg/m ³)	Dust Generating Source(DGS)	Distance from DGS
07-Jan-26	Near External OB Dump, Jamania	286	175	74	15.81	26.50	1.4	Mining Activities	About 500m
07-Jan-26	New Time Office (Near Z-Patch)	288	186	70	14.26	20.05	1.2	Mining Activities	About 500m
07-Jan-26	Near Project Office	273	165	68	22.36	37.24	0.9	Mining Activities	About 500m
22-Jan-26	Near External OB Dump, Jamania	251	159	65	16.12	38.42	0.6	Mining Activities	About 500m
22-Jan-26	New Time Office (Near Z-Patch)	269	166	67	16.52	31.37	1.0	Mining Activities	About 500m
22-Jan-26	Near Project Office	260	154	65	15.27	28.23	1.0	Mining Activities	About 500m

Handwritten Signature
Authorised Signatory
CMPDI, RI-VII, LAB
BUBANESWAR

Handwritten Signature

MoEF Standards Notification dated 25th September, 2009	600	300		120	120	92(8 Hours)
--	-----	-----	--	-----	-----	-------------



संयुक्त प्रदूषण नियंत्रण बोर्ड
C.M.P.D.I.
LAB, RAJESWAR

Test Report

AMBIENT AIR QUALITY DATA

Area :

Kaniha

(Reference Station)

Project :

Kaniha OCP

(conc. in $\mu\text{g}/\text{cu.m.}$)

Date of Sampling	Monitoring Station	SPM	PM10	PM2.5	SO2	NOx	Dust Generating Source(DGS)	Distance from DGS
01-Jan-26	Guland, South West of Mine	233	91	50	16.16	29.26	Mining Activities	About 750m
01-Jan-26	Gandaberna	214	87	49	15.81	27.21	Coal Transportation Road	About 500m
01-Jan-26	South Of Proposed Quarry Limit of KOCP	216	84	49	24.60	23.63	Mining Activities	About 500m
01-Jan-26	Kansamunda Village (West of the mine)	235	91	50	14.54	27.01	Mining Activities	About 500m
02-Jan-26	Guland, South West of Mine	221	81	46	16.96	32.26	Mining Activities	About 750m
02-Jan-26	South Of Proposed Quarry Limit of KOCP	235	88	51	15.42	32.23	Mining Activities	About 500m
02-Jan-26	Kansamunda Village (West of the mine)	198	78	43	14.94	33.76	Mining Activities	About 500m
02-Jan-26	Gandaberna	226	94	53	17.30	28.36	Coal Transportation Road	About 500m
05-Jan-26	Near Harichandanpur	244	94	53	20.78	41.75	Mining Activities	About 2km
05-Jan-26	Kaniha (North of the Mine)	207	74	43	13.49	34.38	Mining Activities	About 500m
06-Jan-26	Near Harichandanpur	229	89	50	16.96	30.72	Mining Activities	About 2km
06-Jan-26	Kaniha (North of the Mine)	217	91	50	16.58	31.51	Mining Activities	About 500m
08-Jan-26	Gandaberna	196	80	44	20.98	27.37	Coal Transportation Road	About 500m
08-Jan-26	Guland, South West of Mine	203	77	44	24.17	26.79	Mining Activities	About 750m
08-Jan-26	Kansamunda Village (West of the mine)	193	82	41	16.56	22.51	Mining Activities	About 500m
08-Jan-26	South Of Proposed Quarry Limit of KOCP	187	76	40	22.36	31.51	Mining Activities	About 500m
09-Jan-26	Kansamunda Village (West of the mine)	218	86	49	16.12	22.06	Mining Activities	About 500m

*NAAQS, 2009

100 80 80 80

Authorised Signatory
C.M.P.D.I. RI-VII, LAB
RAJESWAR

Jasvati

Project :

Kaniha OCP

(conc. in $\mu\text{g}/\text{cu.m.}$)

Date of Sampling	Monitoring Station	SPM	PM10	PM2.5	SO2	NOx	Dust Generating Source(DGS)	Distance from DGS
09-Jan-26	Guiland, South West of Mine	196	73	42	16.56	37.51	Mining Activities	About 750m
09-Jan-26	Gandaberna	211	83	48	15.18	29.85	Coal Transportation Road	About 500m
09-Jan-26	South Of Proposed Quarry Limit of KOCP	198	79	42	14.26	22.20	Mining Activities	About 500m
12-Jan-26	Kaniha (North of the Mine)	187	73	43	18.51	27.93	Mining Activities	About 500m
12-Jan-26	Near Harichandanpur	205	84	46	18.98	21.76	Mining Activities	About 2km
13-Jan-26	Near Harichandanpur	216	87	49	22.90	37.03	Mining Activities	About 2km
13-Jan-26	Kaniha (North of the Mine)	206	82	48	18.51	28.65	Mining Activities	About 500m
16-Jan-26	Guiland, South West of Mine	196	81	46	12.05	22.29	Mining Activities	About 750m
16-Jan-26	Kansamunda Village (West of the mine)	219	89	51	11.61	36.32	Mining Activities	About 500m
16-Jan-26	Gandaberna	187	75	42	19.08	30.58	Coal Transportation Road	About 500m
16-Jan-26	South Of Proposed Quarry Limit of KOCP	203	84	48	14.84	36.86	Mining Activities	About 500m
17-Jan-26	Guiland, South West of Mine	214	86	47	16.54	26.66	Mining Activities	About 750m
17-Jan-26	Gandaberna	199	87	48	16.07	34.67	Coal Transportation Road	About 500m
17-Jan-26	Kansamunda Village (West of the mine)	201	85	47	23.21	21.46	Mining Activities	About 500m
17-Jan-26	South Of Proposed Quarry Limit of KOCP	188	75	43	12.95	37.14	Mining Activities	About 500m
19-Jan-26	Near Harichandanpur	183	79	44	16.96	29.01	Mining Activities	About 2km
19-Jan-26	Kaniha (North of the Mine)	227	89	51	23.21	19.81	Mining Activities	About 500m
20-Jan-26	Kaniha (North of the Mine)	190	85	47	19.64	33.84	Mining Activities	About 500m
20-Jan-26	Near Harichandanpur	193	83	47	15.18	20.64	Mining Activities	About 2km

*NAAQ8,2009

100 80 60 80

Authorized Signature
 CMMI, RI-VII, LAE

Janak

Project :

Kaniha OCP

(conc. in $\mu\text{g}/\text{cu.m.}$)

Date of Sampling	Monitoring Station	SPM	PM10	PM2.5	SO2	NOx	Dust Generating Source(DGS)	Distance from DGS
23-Jan-26	Kansamunda Village (West of the mine)	195	83	46	21.43	28.06	Mining Activities	About 500m
23-Jan-26	South Of Proposed Quarry Limit of KOCP	223	87	49	21.63	23.52	Mining Activities	About 500m
23-Jan-26	Guiland, South West of Mine	208	79	40	22.32	39.62	Mining Activities	About 750m
23-Jan-26	Gandaberna	202	83	45	22.32	32.19	Coal Transportation Road	About 500m
24-Jan-26	South Of Proposed Quarry Limit of KOCP	239	91	52	11.03	35.29	Mining Activities	About 500m
24-Jan-26	Guiland, South West of Mine	196	87	45	19.64	35.49	Mining Activities	About 750m
24-Jan-26	Kansamunda Village (West of the mine)	188	79	44	22.77	40.45	Mining Activities	About 500m
24-Jan-26	Gandaberna	190	78	43	15.69	19.60	Coal Transportation Road	About 500m
27-Jan-26	Near Harichandanpur	185	81	45	13.57	32.93	Mining Activities	About 2km
27-Jan-26	Kaniha (North of the Mine)	217	81	45	21.20	22.74	Mining Activities	About 500m
28-Jan-26	Near Harichandanpur	175	75	42	16.07	34.67	Mining Activities	About 2km
28-Jan-26	Kaniha (North of the Mine)	186	77	42	12.72	29.80	Mining Activities	About 500m
30-Jan-26	Guiland, South West of Mine	187	75	43	16.54	35.29	Mining Activities	About 750m
30-Jan-26	Kansamunda Village (West of the mine)	182	75	41	19.20	28.06	Mining Activities	About 500m
30-Jan-26	Gandaberna	218	93	50	13.99	38.42	Coal Transportation Road	About 500m
31-Jan-26	Guiland, South West of Mine	182	70	40	13.57	32.93	Mining Activities	About 750m
31-Jan-26	Kansamunda Village (West of the mine)	187	78	43	12.50	32.19	Mining Activities	About 500m
31-Jan-26	Gandaberna	185	83	41	16.96	22.65	Coal Transportation Road	About 500m

*NAAQS, 2009

100 80 80 80

K. S. Srinivasan
 Authorized Signatory
 CMPDI, RI-VII, LAB
 RAIPURANESWAR

Jasvanti

Test Report



AMBIENT AIR QUALITY DATA (NAAQS PARAMETER)

Area : Kaniha

Project : Kaniha OCP

Date of Sampling	Monitoring Station	Ammonia (NH ₃)	Ozone (O ₃)	Lead (Pb)	Arsenic (As)	Nickel (Ni)	CO	Benzo(a)Pyrene	Benzene
		($\mu\text{g}/\text{m}^3$)	($\mu\text{g}/\text{m}^3$)	($\mu\text{g}/\text{m}^3$)	(ng/m^3)	(ng/m^3)	(mg/m^3)	(ng/m^3)	($\mu\text{g}/\text{m}^3$)
01-Jan-26	Guiland, South West of Mine	<20.0	15.98	<0.1	<1.0	<1.0	0.6	BQL(QL)=0.7	BQL
01-Jan-26	Kansamunda Village (West of the mine)	<20.0	11.07	<0.1	<1.0	<1.0	0.9	BQL(QL)=0.7	BQL
01-Jan-26	Gandaberna	<20.0	14.50	<0.1	<1.0	<1.0	1.0	BQL(QL)=0.7	BQL
01-Jan-26	South Of Proposed Quarry Limit of KOCP	<20.0	21.13	<0.1	<1.0	<1.0	1.3	BQL(QL)=0.7	BQL
02-Jan-26	Guiland, South West of Mine	<20.0	23.60	<0.1	<1.0	<1.0	0.6	BQL(QL)=0.7	BQL
02-Jan-26	Gandaberna	<20.0	11.55	<0.1	<1.0	<1.0	0.6	BQL(QL)=0.7	BQL
02-Jan-26	South Of Proposed Quarry Limit of KOCP	<20.0	17.95	<0.1	<1.0	<1.0	0.7	BQL(QL)=0.7	BQL
02-Jan-26	Kansamunda Village (West of the mine)	<20.0	28.27	<0.1	<1.0	<1.0	0.8	BQL(QL)=0.7	BQL
05-Jan-26	Kaniha (North of the Mine)	<20.0	11.55	<0.1	<1.0	<1.0	1.2	BQL(QL)=0.7	BQL
05-Jan-26	Near Harichandanpur	<20.0	21.38	<0.1	<1.0	<1.0	0.6	BQL(QL)=0.7	BQL
06-Jan-26	Near Harichandanpur	<20.0	11.55	<0.1	<1.0	<1.0	1.0	BQL(QL)=0.7	BQL
06-Jan-26	Kaniha (North of the Mine)	<20.0	28.27	<0.1	<1.0	<1.0	1.0	BQL(QL)=0.7	BQL
08-Jan-26	Kansamunda Village (West of the mine)	<20.0	17.45	<0.1	<1.0	<1.0	0.9	BQL(QL)=0.7	BQL
08-Jan-26	Guiland, South West of Mine	<20.0	26.55	<0.1	<1.0	<1.0	1.4	BQL(QL)=0.7	BQL
08-Jan-26	South Of Proposed Quarry Limit of KOCP	<20.0	21.38	<0.1	<1.0	<1.0	1.4	BQL(QL)=0.7	BQL
08-Jan-26	Gandaberna	<20.0	19.92	<0.1	<1.0	<1.0	1.3	BQL(QL)=0.7	BQL
09-Jan-26	South Of Proposed Quarry Limit of KOCP	<20.0	23.60	<0.1	<1.0	<1.0	0.7	BQL(QL)=0.7	BQL
09-Jan-26	Kansamunda Village (West of the mine)	<20.0	20.40	<0.1	<1.0	<1.0	0.7	BQL(QL)=0.7	BQL
09-Jan-26	Gandaberna	<20.0	20.90	<0.1	<1.0	<1.0	1.1	BQL(QL)=0.7	BQL
09-Jan-26	Guiland, South West of Mine	<20.0	12.05	<0.1	<1.0	<1.0	1.0	BQL(QL)=0.7	BQL
12-Jan-26	Kaniha (North of the Mine)	<20.0	14.50	<0.1	<1.0	<1.0	0.9	BQL(QL)=0.7	BQL
12-Jan-26	Near Harichandanpur	<20.0	23.10	<0.1	<1.0	<1.0	0.6	BQL(QL)=0.7	BQL
13-Jan-26	Near Harichandanpur	<20.0	15.23	<0.1	<1.0	<1.0	0.8	BQL(QL)=0.7	BQL
13-Jan-26	Kaniha (North of the Mine)	<20.0	21.38	<0.1	<1.0	<1.0	1.0	BQL(QL)=0.7	BQL

Standard	400(24hr) (μg)	180(1hr) (μg)	1.0(24hr) (μg)	6.0(Annual) (μg)	20(Annual) (μg)	02(8hr) (μg)	01(annual) (μg)	05(annual) (μg)
----------	--------------------------------	-------------------------------	--------------------------------	----------------------------------	---------------------------------	------------------------------	---------------------------------	---------------------------------

Janak

Project :

Kaniha OCP

Date of Sampling	Monitoring Station	Ammonia(NH ₃)	Ozone(O ₃)	Lead(Pb)	Arsenic(As)	Nickel(Ni)	CO	Benzo(a)Pyrene	Benzene
		(µg/m ³)	(µg/m ³)	(µg/m ³)	(ng/m ³)	(ng/m ³)	(mg/m ³)	(ng/m ³)	(µg/m ³)
16-Jan-26	Kansamunda Village (West of the mine)	<20.0	23.35	<0.1	<1.0	<1.0	1.0	BQL(QL)=0.7	BQL
16-Jan-26	Guiland, South West of Mine	<20.0	23.60	<0.1	<1.0	<1.0	1.2	BQL(QL)=0.7	BQL
16-Jan-26	Gandaberna	<20.0	24.58	<0.1	<1.0	<1.0	0.9	BQL(QL)=0.7	BQL
16-Jan-26	South Of Proposed Quarry Limit of KOCP	<20.0	23.60	<0.1	<1.0	<1.0	1.4	BQL(QL)=0.7	BQL
17-Jan-26	South Of Proposed Quarry Limit of KOCP	<20.0	23.60	<0.1	<1.0	<1.0	1.2	BQL(QL)=0.7	BQL
17-Jan-26	Guiland, South West of Mine	<20.0	13.27	<0.1	<1.0	<1.0	1.0	BQL(QL)=0.7	BQL
17-Jan-26	Kansamunda Village (West of the mine)	<20.0	12.53	<0.1	<1.0	<1.0	1.1	BQL(QL)=0.7	BQL
17-Jan-26	Gandaberna	<20.0	22.37	<0.1	<1.0	<1.0	1.0	BQL(QL)=0.7	BQL
19-Jan-26	Near Harichandanpur	<20.0	20.15	<0.1	<1.0	<1.0	0.7	BQL(QL)=0.7	BQL
19-Jan-26	Kaniha (North of the Mine)	<20.0	23.35	<0.1	<1.0	<1.0	0.7	BQL(QL)=0.7	BQL
20-Jan-26	Near Harichandanpur	<20.0	25.57	<0.1	<1.0	<1.0	0.6	BQL(QL)=0.7	BQL
20-Jan-26	Kaniha (North of the Mine)	<20.0	22.87	<0.1	<1.0	<1.0	0.7	BQL(QL)=0.7	BQL
23-Jan-26	Kansamunda Village (West of the mine)	<20.0	21.38	<0.1	<1.0	<1.0	0.7	BQL(QL)=0.7	BQL
23-Jan-26	South Of Proposed Quarry Limit of KOCP	<20.0	24.58	<0.1	<1.0	<1.0	0.7	BQL(QL)=0.7	BQL
23-Jan-26	Guiland, South West of Mine	<20.0	11.30	<0.1	<1.0	<1.0	0.7	BQL(QL)=0.7	BQL
23-Jan-26	Gandaberna	<20.0	20.90	<0.1	<1.0	<1.0	1.0	BQL(QL)=0.7	BQL
24-Jan-26	Kansamunda Village (West of the mine)	<20.0	14.02	<0.1	<1.0	<1.0	0.7	BQL(QL)=0.7	BQL
24-Jan-26	Gandaberna	<20.0	16.97	<0.1	<1.0	<1.0	1.1	BQL(QL)=0.7	BQL
24-Jan-26	Guiland, South West of Mine	<20.0	24.58	<0.1	<1.0	<1.0	1.0	BQL(QL)=0.7	BQL
24-Jan-26	South Of Proposed Quarry Limit of KOCP	<20.0	20.65	<0.1	<1.0	<1.0	1.1	BQL(QL)=0.7	BQL
27-Jan-26	Near Harichandanpur	<20.0	26.80	<0.1	<1.0	<1.0	1.3	BQL(QL)=0.7	BQL
27-Jan-26	Kaniha (North of the Mine)	<20.0	18.18	<0.1	<1.0	<1.0	0.6	BQL(QL)=0.7	BQL
28-Jan-26	Kaniha (North of the Mine)	<20.0	22.37	<0.1	<1.0	<1.0	1.0	BQL(QL)=0.7	BQL
28-Jan-26	Near Harichandanpur	<20.0	23.85	<0.1	<1.0	<1.0	1.2	BQL(QL)=0.7	BQL
30-Jan-26	South Of Proposed Quarry Limit of KOCP	<20.0	20.40	<0.1	<1.0	<1.0	0.7	BQL(QL)=0.7	BQL
30-Jan-26	Guiland, South West of Mine	<20.0	23.35	<0.1	<1.0	<1.0	0.6	BQL(QL)=0.7	BQL
30-Jan-26	Gandaberna	<20.0	25.07	<0.1	<1.0	<1.0	0.6	BQL(QL)=0.7	BQL
30-Jan-26	Kansamunda Village (West of the mine)	<20.0	19.42	<0.1	<1.0	<1.0	0.9	BQL(QL)=0.7	BQL

Standard	400(24 hours)	180(hours)	1.0(24 hours)	6.0(Annual)	20(Annual)	02(8 hours)	01(annual)	05(annual)
----------	---------------	------------	---------------	-------------	------------	-------------	------------	------------

Authorised Signatory
CMPDI, RI-VII, LAB
RHIIBANESWAR

Januati

Project :

Kaniha OCP

Date of Sampling	Monitoring Station	Ammonia(NH3)	Ozone(O3)	Lead(Pb)	Arsenic(As)	Nickel(Ni)	CO	Benzo(a)Pyrene	Benzene
		(µg/m3)	(µg/m3)	(µg/m3)	(ng/m3)	(ng/m3)	(mg/m3)	(ng/m3)	(µg/m3)
31-Jan-26	Gandaberna	<20.0	26.30	<0.1	<1.0	<1.0	0.6	BQL(QL)=0.7	BQL
31-Jan-26	Guiland, South West of Mine	<20.0	19.67	<0.1	<1.0	<1.0	1.2	BQL(QL)=0.7	BQL
31-Jan-26	Kansamunda Village (West of the mine)	<20.0	19.42	<0.1	<1.0	<1.0	0.9	BQL(QL)=0.7	BQL
31-Jan-26	South Of Proposed Quarry Limit of KOCP	<20.0	23.10	<0.1	<1.0	<1.0	0.6	BQL(QL)=0.7	BQL

Standard	400(24hrs)	180(hourly)	1.0(24hourly)	6.0(Annual)	20(Annual)	02(8hours)	01(annual)	05(annual)
----------	------------	-------------	---------------	-------------	------------	------------	------------	------------

F. J. J. J.
 Authorised Signatory
 CMPDI, RI-VII, LAB

January

**TABLE--****NOISE LEVEL MONITORING DATA**AREA : **Kaniha**PROJECT : **Kaniha OCP**

DATE OF SAMPLING	STATION	Noise Level Measurement in Leq dB(A)	
		DAY	NIGHT
15-Jan-26	Kansamunda Village (West of the Mine)	48.7	40.3
15-Jan-26	Near External OB Dump, Jamania	64.7	52.1
15-Jan-26	Near Time Office (Near Z-Patch)	62.7	51.9
15-Jan-26	Near Project Office	65.9	52.7
29-Jan-26	Kansamunda Village (West of the Mine)	49.1	39.7
29-Jan-26	Near External OB Dump, Jamania	70.7	50.3
29-Jan-26	Near Time Office (Near Z-Patch)	72.2	52.7
29-Jan-26	Near Project Office	69.7	49.9

MoEF Standard Notification dated 25th September, 2000	6.00 AM -10.00 PM Leq 75dB(A) (Industrial)	10.00 PM -6.00 AM Leq 70dB(A) (Industrial)
MoEF Standard Notification dated 25th September, 2000	6.00 AM -10.00 PM Leq 55dB(A) (Residential)	10.00 PM -6.00 AM Leq 45dB(A) (Residential)
MoEF Standard Notification dated 25th September, 2000	6.00 AM -10.00 PM Leq 65dB(A) (Commercial)	10.00 PM -6.00 AM Leq 55dB(A) (Commercial)
MoEF Standard Notification dated 25th September, 2000	6.00 AM -10.00 PM Leq 50dB(A) (Silence Zone)	10.00 PM -6.00 AM Leq 40dB(A) (Silence Zone)

K. J. Jha
Authorised Signatory
CMPDI, RI-VII, LAB
BHUBANESWAR

J. Jha


EFFLUENT QUALITY DATA

Area :

Kaniha

(All dimensions are in mg/l unless otherwise stated except pH)

Project :

Kaniha OCP

Date of Sampling	Sampling Station	pH	Oil & Grease	TSS	COD	BOD	Remarks
15-Jan-26	Clear Water Pond	7.57	<4.0	30	36	-	
15-Jan-26	Kansamunda Sump	7.57	<4.0	22	12	-	
15-Jan-26	Pre Sedimentation Pond	7.61	<4.0	28	20	-	
15-Jan-26	Z-Patch Sump	7.60	<4.0	26	20	-	
31-Jan-26	Clear Water Pond	7.66	<4.0	26	32	-	
31-Jan-26	Pre Sedimentation Pond	7.45	<4.0	34	28	-	

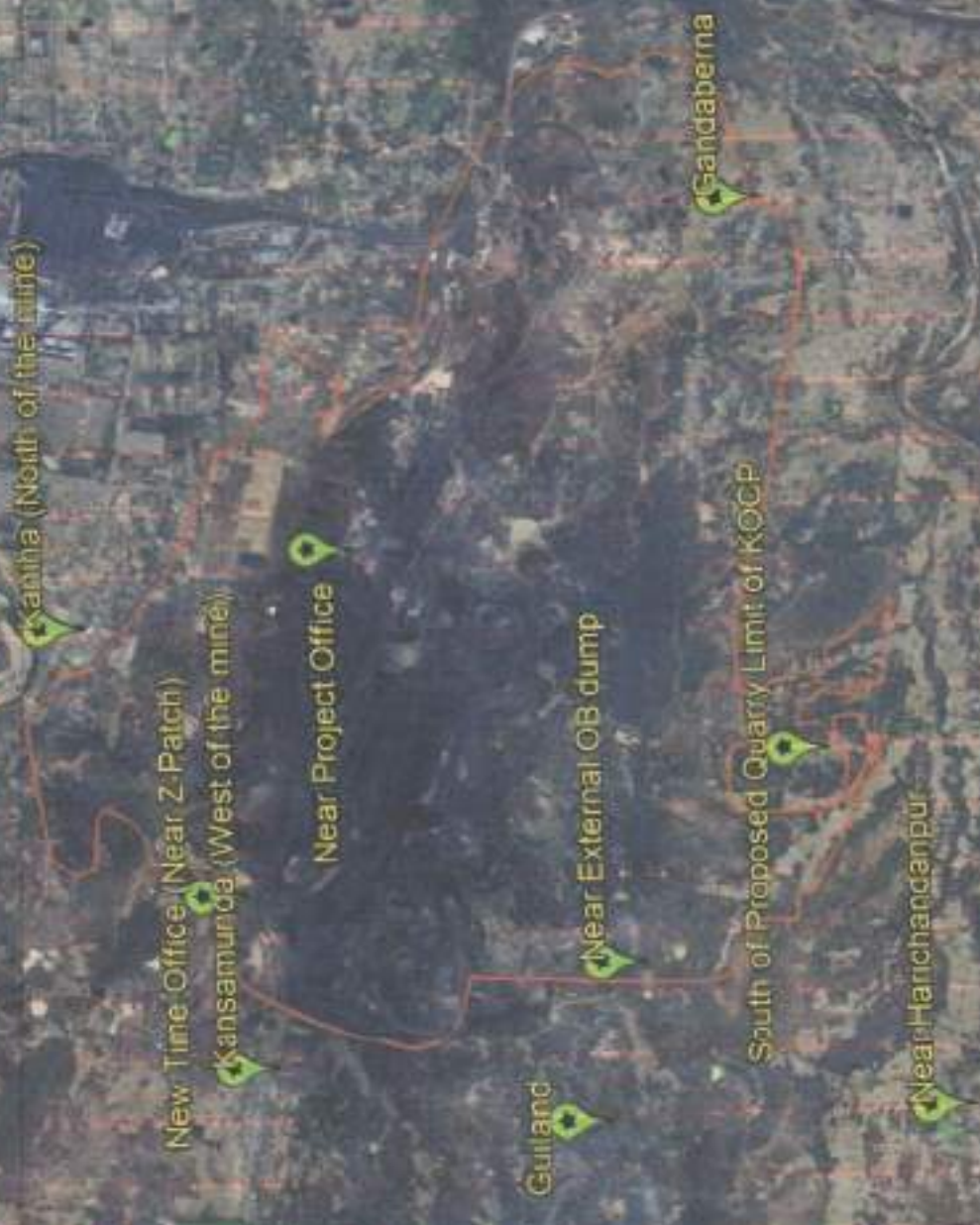
 Authorised Signatory
 CMPDI, RI-VII, LAB
 BHUBANESWAR

 MoEF Standard Notification dated 25th September, 2000
 and MoEF Schedule VI, General standard for discharge
 of Environmental Pollutants Part A: Effluents

5.5-9.0	10	100	250	30
---------	----	-----	-----	----

Kaniha OCP

Legend
Monitoring Station



Google Earth



2 km

**Environmental Monitoring Report
For
January-2026**

**Project: Hingula OCP
Area: Hingula
Coalfield: Talcher**



Mahanadi Coalfields Limited



सीएमपीडीआई
मिनी रात्रो
cmpdi
Mini Ratna

Central Mine Planning & Design Institute Ltd.
(A Subsidiary of Coal India Ltd.)

Regional Institute-VII, Samantpuri, P.O : RRL, Bhubaneswar-751013 (Odisha)
[Assistance from Environment Division, CMPDI(HQs), Ranchi]

The test report shall not be reproduced in part or full without written approval of the competent authority



Test Report

AMBIENT AIR QUALITY DATA

Area :

Hingula

(Compliance Station)

Project :

Hingula OCP

(conc. in $\mu\text{g}/\text{cu.m.}$)

Date of Sampling	Monitoring Station	SPM	PM10	PM2.5	SO ₂	NO _x	CO (mg/m ³)	Dust Generating Source(DGS)	Distance from DGS
07-Jan-26	Time Office	264	175	70	21.63	34.66	1.1	Mining Operations and Haul Road	About 200m
07-Jan-26	South West Side of the Mine	253	146	68	15.75	24.01	1.7	Mining Operations	About 300m
22-Jan-26	Time Office	251	162	65	14.29	22.29	1.1	Mining Operations and Haul Road	About 200m
22-Jan-26	South West Side of the Mine	245	157	62	17.39	33.72	1.1	Mining Operations	About 300m

Authorised
Authorised Signatory
CMPDI, RI-VII, LAB
BHUBANESWAR

Jamali

MoEF Standards Notification dated 25th
September, 2000

500	250		120	120	02(8 Hours)
-----	-----	--	-----	-----	----------------



Test Report

AMBIENT AIR QUALITY DATA

Area :

Hingula

(Reference Station)

Project :

Hingula OCP

(conc. in $\mu\text{g}/\text{cu. m.}$)

Date of Sampling	Monitoring Station	SPM	PM10	PM2.5	SO2	NOx	Dust Generating Source(DGS)	Distance from DGS
01-Jan-26	Kankarei Village	196	75	40	20.78	24.42	Mining Activities	About 1500 m
01-Jan-26	Sanamahitala Village	169	65	37	12.72	31.51	Transportation road	About 1 KM
01-Jan-26	Balichandrapur Village	193	85	48	18.58	29.26	Mining Activities	About 1 KM
01-Jan-26	Banabaspur Village	217	88	49	13.88	32.23	Mining Activities	About 1500 m
01-Jan-26	Solda Village	205	74	43	18.51	27.93	Coal Transportation Road	About 2km
02-Jan-26	Solda Village	213	88	48	22.90	29.94	Coal Transportation Road	About 2km
02-Jan-26	Banabaspur Village	198	82	45	19.79	27.01	Mining Activities	About 1500 m
02-Jan-26	Sanamahitala Village	187	78	43	14.65	23.63	Transportation road	About 1 KM
02-Jan-26	Kankarei Village	206	83	44	16.19	33.66	Mining Activities	About 1500 m
02-Jan-26	Balichandrapur Village	217	91	50	23.43	25.51	Mining Activities	About 1 KM
08-Jan-26	Balichandrapur Village	225	95	53	21.63	37.81	Mining Activities	About 1 KM
08-Jan-26	Banabaspur Village	208	84	47	17.73	36.53	Mining Activities	About 1500 m
08-Jan-26	Kankarei Village	201	80	43	21.68	32.39	Mining Activities	About 1500 m
08-Jan-26	Solda Village	198	83	46	21.41	36.76	Coal Transportation Road	About 2km
08-Jan-26	Sanamahitala Village	211	85	48	13.33	33.76	Transportation road	About 1 KM
09-Jan-26	Solda Village	193	81	44	22.21	29.26	Coal Transportation Road	About 2km
09-Jan-26	Sanamahitala Village	203	75	42	21.20	35.45	Transportation road	About 1 KM
09-Jan-26	Banabaspur Village	226	90	51	18.75	73.12	Mining Activities	About 1500 m
09-Jan-26	Balichandrapur Village	234	83	46	23.02	31.51	Mining Activities	About 1 KM
09-Jan-26	Kankarei Village	207	85	47	22.48	29.94	Mining Activities	About 1500 m
16-Jan-26	Balichandrapur Village	189	79	38	26.34	25.59	Mining Activities	About 1 KM
16-Jan-26	Kankarei Village	208	87	49	12.50	34.67	Mining Activities	About 1500 m
16-Jan-26	Sanamahitala Village	172	67	41	14.14	25.27	Transportation road	About 1 KM
16-Jan-26	Banabaspur Village	211	81	46	20.09	40.45	Mining Activities	About 1500 m
16-Jan-26	Solda Village	199	84	46	13.15	19.60	Coal Transportation Road	About 2km

WLAQS, 2009

100 80 80 80

Authorized Signatory
CMPDI, RI-VII, LAB
BHUBANESWAR

Janaki

Project :

Hingula OCP

(conc. in $\mu\text{g}/\text{cu.m.}$)

Date of Sampling	Monitoring Station	SPM	PM10	PM2.5	SO2	NOx	Dust Generating Source(DGS)	Distance from DGS
17-Jan-26	Sanamahitala Village	193	80	46	13.99	21.96	Transportation road	About 1 KM
17-Jan-26	Banabaspur Village	198	80	42	19.20	38.79	Mining Activities	About 1500 m
17-Jan-26	Solda Village	209	93	50	11.03	34.50	Coal Transportation Road	About 2km
17-Jan-26	Balichandrapur Village	204	78	41	19.93	25.09	Mining Activities	About 1 KM
17-Jan-26	Kankarei Village	201	85	48	14.73	33.02	Mining Activities	About 1500 m
23-Jan-26	Balichandrapur Village	214	83	45	16.96	27.45	Mining Activities	About 1 KM
23-Jan-26	Banabaspur Village	205	86	47	16.12	31.37	Mining Activities	About 1500 m
23-Jan-26	Kankarei Village	195	80	43	23.21	21.46	Mining Activities	About 1500 m
23-Jan-26	Sanamahitala Village	160	62	35	16.54	37.64	Transportation road	About 1 KM
23-Jan-26	Solda Village	181	71	37	21.20	30.58	Coal Transportation Road	About 2km
24-Jan-26	Balichandrapur Village	201	92	39	27.14	38.42	Mining Activities	About 1 KM
24-Jan-26	Kankarei Village	227	93	52	11.03	31.37	Mining Activities	About 1500 m
24-Jan-26	Sanamahitala Village	200	83	45	11.61	36.32	Transportation road	About 1 KM
24-Jan-26	Solda Village	201	82	45	16.52	33.02	Coal Transportation Road	About 2km
24-Jan-26	Banabaspur Village	175	69	34	22.05	38.42	Mining Activities	About 1500 m
30-Jan-26	Balichandrapur Village	211	85	48	22.77	33.02	Mining Activities	About 1 KM
30-Jan-26	Banabaspur Village	201	77	43	11.61	28.89	Mining Activities	About 1500 m
30-Jan-26	Kankarei Village	203	79	44	13.84	41.27	Mining Activities	About 1500 m
30-Jan-26	Sanamahitala Village	191	73	39	22.62	34.85	Transportation road	About 1 KM
30-Jan-26	Solda Village	184	74	40	20.36	38.42	Coal Transportation Road	About 2km
31-Jan-26	Solda Village	194	81	43	14.42	19.60	Coal Transportation Road	About 2km
31-Jan-26	Banabaspur Village	204	81	45	19.08	25.88	Mining Activities	About 1500 m
31-Jan-26	Kankarei Village	214	83	46	18.30	37.97	Mining Activities	About 1500 m
31-Jan-26	Sanamahitala Village	211	86	48	15.69	32.15	Transportation road	About 1 KM
31-Jan-26	Balichandrapur Village	207	81	46	22.90	32.15	Mining Activities	About 1 KM

Authorized Signatory
 CMPDI, RI-VII, LAB
 BHUBANESWAR

Janaki

*NA4QS,2009

100	80	80	80
-----	----	----	----

AMBIENT AIR QUALITY DATA (NAAQS PARAMETER)

Area :

Hingula

Project :

Hingula OCP

Date of Sampling	Monitoring Station	Ammonia (NH ₃)	Ozone (O ₃)	Lead (Pb)	Arsenic (As)	Nickel (Ni)	CO	Benzo(a)Pyrene	Benzene
		(µg/m ³)	(µg/m ³)	(µg/m ³)	(ng/m ³)	(ng/m ³)	(mg/m ³)	(ng/m ³)	(µg/m ³)
01-Jan-26	Sanamahitala Village	<20.0	25.32	<0.1	<1.0	<1.0	1.2	BQL(QL)=0.7	BQL
01-Jan-26	Balichandrapur Village	<20.0	26.30	<0.1	<1.0	<1.0	1.2	BQL(QL)=0.7	BQL
01-Jan-26	Kankarei Village	<20.0	20.90	<0.1	<1.0	<1.0	1.7	BQL(QL)=0.7	BQL
01-Jan-26	Solda Village	<20.0	27.28	<0.1	<1.0	<1.0	1.7	BQL(QL)=0.7	BQL
01-Jan-26	Banabaspur Village	<20.0	24.08	<0.1	<1.0	<1.0	1.3	BQL(QL)=0.7	BQL
02-Jan-26	Balichandrapur Village	<20.0	15.48	<0.1	<1.0	<1.0	1.3	BQL(QL)=0.7	BQL
02-Jan-26	Sanamahitala Village	<20.0	18.18	<0.1	<1.0	<1.0	1.5	BQL(QL)=0.7	BQL
02-Jan-26	Banabaspur Village	<20.0	22.87	<0.1	<1.0	<1.0	1.5	BQL(QL)=0.7	BQL
02-Jan-26	Solda Village	<20.0	21.38	<0.1	<1.0	<1.0	1.7	BQL(QL)=0.7	BQL
02-Jan-26	Kankarei Village	<20.0	27.28	<0.1	<1.0	<1.0	1.5	BQL(QL)=0.7	BQL
08-Jan-26	Kankarei Village	<20.0	26.80	<0.1	<1.0	<1.0	1.8	BQL(QL)=0.7	BQL
08-Jan-26	Solda Village	<20.0	23.60	<0.1	<1.0	<1.0	1.8	BQL(QL)=0.7	BQL
08-Jan-26	Banabaspur Village	<20.0	13.03	<0.1	<1.0	<1.0	1.6	BQL(QL)=0.7	BQL
08-Jan-26	Balichandrapur Village	<20.0	19.17	<0.1	<1.0	<1.0	1.5	BQL(QL)=0.7	BQL
08-Jan-26	Sanamahitala Village	<20.0	27.28	<0.1	<1.0	<1.0	1.6	BQL(QL)=0.7	BQL
09-Jan-26	Balichandrapur Village	<20.0	11.30	<0.1	<1.0	<1.0	1.4	BQL(QL)=0.7	BQL
09-Jan-26	Sanamahitala Village	<20.0	15.00	<0.1	<1.0	<1.0	1.8	BQL(QL)=0.7	BQL
09-Jan-26	Solda Village	<20.0	21.13	<0.1	<1.0	<1.0	1.1	BQL(QL)=0.7	BQL
09-Jan-26	Kankarei Village	<20.0	20.90	<0.1	<1.0	<1.0	1.8	BQL(QL)=0.7	BQL
09-Jan-26	Banabaspur Village	<20.0	15.73	<0.1	<1.0	<1.0	1.8	BQL(QL)=0.7	BQL
16-Jan-26	Balichandrapur Village	<20.0	28.27	<0.1	<1.0	<1.0	1.2	BQL(QL)=0.7	BQL
16-Jan-26	Solda Village	<20.0	23.35	<0.1	<1.0	<1.0	1.3	BQL(QL)=0.7	BQL
16-Jan-26	Banabaspur Village	<20.0	24.08	<0.1	<1.0	<1.0	1.6	BQL(QL)=0.7	BQL
16-Jan-26	Kankarei Village	<20.0	14.25	<0.1	<1.0	<1.0	1.4	BQL(QL)=0.7	BQL

Standard	400(24hrs)	180(hr)	1.0(24hrs)	6.0(Annual)	20(Annual)	02(8hrs)	01(annual)	05(annual)
----------	------------	---------	------------	-------------	------------	----------	------------	------------

Project :

Hingula OCP

Date of Sampling	Monitoring Station	Ammonia(NH ₃)	Ozone(O ₃)	Lead(Pb)	Arsenic(As)	Nickel(Ni)	CO	Benzo(a)Pyrene	Benzene
		(µg/m ³)	(µg/m ³)	(µg/m ³)	(ng/m ³)	(ng/m ³)	(mg/m ³)	(ng/m ³)	(µg/m ³)
16-Jan-26	Sanamahitala Village	<20.0	27.08	<0.1	<1.0	<1.0	1.1	BQL(QL)=0.7	BQL
17-Jan-26	Kankarei Village	<20.0	16.22	<0.1	<1.0	<1.0	1.6	BQL(QL)=0.7	BQL
17-Jan-26	Balichandrapur Village	<20.0	14.75	<0.1	<1.0	<1.0	1.6	BQL(QL)=0.7	BQL
17-Jan-26	Solda Village	<20.0	18.93	<0.1	<1.0	<1.0	1.7	BQL(QL)=0.7	BQL
17-Jan-26	Sanamahitala Village	<20.0	19.67	<0.1	<1.0	<1.0	1.4	BQL(QL)=0.7	BQL
17-Jan-26	Banabaspur Village	<20.0	24.83	<0.1	<1.0	<1.0	1.3	BQL(QL)=0.7	BQL
23-Jan-26	Balichandrapur Village	<20.0	18.93	<0.1	<1.0	<1.0	1.2	BQL(QL)=0.7	BQL
23-Jan-26	Sanamahitala Village	<20.0	11.30	<0.1	<1.0	<1.0	1.2	BQL(QL)=0.7	BQL
23-Jan-26	Solda Village	<20.0	25.32	<0.1	<1.0	<1.0	1.7	BQL(QL)=0.7	BQL
23-Jan-26	Kankarei Village	<20.0	20.65	<0.1	<1.0	<1.0	1.6	BQL(QL)=0.7	BQL
23-Jan-26	Banabaspur Village	<20.0	27.53	<0.1	<1.0	<1.0	1.4	BQL(QL)=0.7	BQL
24-Jan-26	Banabaspur Village	<20.0	13.03	<0.1	<1.0	<1.0	1.6	BQL(QL)=0.7	BQL
24-Jan-26	Solda Village	<20.0	19.42	<0.1	<1.0	<1.0	1.4	BQL(QL)=0.7	BQL
24-Jan-26	Sanamahitala Village	<20.0	19.42	<0.1	<1.0	<1.0	1.1	BQL(QL)=0.7	BQL
24-Jan-26	Kankarei Village	<20.0	15.48	<0.1	<1.0	<1.0	1.2	BQL(QL)=0.7	BQL
24-Jan-26	Balichandrapur Village	<20.0	12.53	<0.1	<1.0	<1.0	1.1	BQL(QL)=0.7	BQL
30-Jan-26	Kankarei Village	<20.0	23.85	<0.1	<1.0	<1.0	1.2	BQL(QL)=0.7	BQL
30-Jan-26	Balichandrapur Village	<20.0	14.75	<0.1	<1.0	<1.0	1.8	BQL(QL)=0.7	BQL
30-Jan-26	Sanamahitala Village	<20.0	12.05	<0.1	<1.0	<1.0	1.1	BQL(QL)=0.7	BQL
30-Jan-26	Banabaspur Village	<20.0	11.30	<0.1	<1.0	<1.0	1.8	BQL(QL)=0.7	BQL
30-Jan-26	Solda Village	<20.0	23.35	<0.1	<1.0	<1.0	1.8	BQL(QL)=0.7	BQL
31-Jan-26	Solda Village	<20.0	15.23	<0.1	<1.0	<1.0	1.7	BQL(QL)=0.7	BQL
31-Jan-26	Banabaspur Village	<20.0	21.63	<0.1	<1.0	<1.0	1.3	BQL(QL)=0.7	BQL
31-Jan-26	Sanamahitala Village	<20.0	11.30	<0.1	<1.0	<1.0	1.6	BQL(QL)=0.7	BQL
31-Jan-26	Balichandrapur Village	<20.0	11.30	<0.1	<1.0	<1.0	1.1	BQL(QL)=0.7	BQL
31-Jan-26	Kankarei Village	<20.0	19.17	<0.1	<1.0	<1.0	1.2	BQL(QL)=0.7	BQL

Standard	400(24 hours)	180(hours)	1.0(24 hours)	6.0(Annual)	20(Annual)	02(Shou rs)	01(annual)	05(annual)
----------	---------------	------------	---------------	-------------	------------	-------------	------------	------------

Authorized Signatory
 CDPD, VI-VII, LAB
 SHUBANESWAR

Janak



सीएनपीडी
CMPDI
भारत

TABLE-

NOISE LEVEL MONITORING DATA

AREA :

Hingula

PROJECT :

Hingula OCP

DATE OF SAMPLING	STATION	Noise Level Measurement in Leq dB(A)	
		DAY	NIGHT
15-Jan-26	South West Side of the Mine	64.2	53.7
15-Jan-26	Solda Village	45.3	38.7
15-Jan-26	Kankarei Village	47.7	37.3
15-Jan-26	Time Office	70.1	56.1
29-Jan-26	South West Side of the Mine	54.2	50.9
29-Jan-26	Solda Village	52.9	41.1
29-Jan-26	Kankarei Village	52.4	39.4
29-Jan-26	Time Office	70.3	56.2

MoEF Standard Notification dated 25th September, 2000	6.00 AM -10.00 PM Leq 75dB(A) (Industrial)	10.00 PM -6.00 AM Leq 70dB(A) (Industrial)
MoEF Standard Notification dated 25th September, 2000	6.00 AM -10.00 PM Leq 55dB(A) (Residential)	10.00 PM -6.00 AM Leq 45dB(A) (Residential)
MoEF Standard Notification dated 25th September, 2000	6.00 AM -10.00 PM Leq 65dB(A) (Commercial)	10.00 PM -6.00 AM Leq 55dB(A) (Commercial)
MoEF Standard Notification dated 25th September, 2000	6.00 AM -10.00 PM Leq 50dB(A) (Silence Zone)	10.00 PM -6.00 AM Leq 40dB(A) (Silence Zone)

Authorised Signatory
CMPDI, RI-VII, LAB
BHUBANESWAR

Janat



संरक्षणपीडीआई
RI-VII
cmpdi
Bhubaneswar

TABLE--

EFFLUENT QUALITY DATA

Area :

Hingula

(All dimensions are in mg/l unless otherwise stated except pH)

Project :

Hingula OCP

Date of Sampling	Sampling Station	pH	Oil & Grease	TSS	COD	BOD	Remarks
15-Jan-26	Inlet of O & G Trap	6.83	<4.0	46	40	-	
15-Jan-26	Mine Sump Water	7.20	<4.0	30	24	-	
15-Jan-26	Outlet of O & G Trap	7.30	<4.0	34	32	-	
31-Jan-26	Inlet of O & G Trap	6.72	<4.0	30	32	-	
31-Jan-26	Outlet of O & G Trap	7.10	<4.0	26	24	-	

To Hanrik
Authorized Signatory
CMPDI, RI-VII, LAB
BHUBANESWAR

Janaki

MoEF Standard Notification dated 25th September, 2000
and MoEF Schedule VI. General standard for discharge
of Environmental Pollutants Part A: Effluents

5.5-9.0	10	100	250	30
---------	----	-----	-----	----



सीएमपीडीआई
रि-वी एल
cmpdi
Mini Report

Drinking Water Quality Data Hingula Area

Project / OCP	Hingula OCP			Indian Drinking Standards (IS-10500):2012	
	Monitoring Station	Time Office Water	Gopalprasad Village Bore Well Water	Kumunda Village Bore Well Water	Acceptable
Date of Sampling	15-Jan-2026	15-Jan-2026	15-Jan-2026		
Colour(Hazen)	4	2	2	5	15
Odour	Agreeable	Agreeable	Agreeable	Agreeable	Agreeable
Taste	Agreeable	Agreeable	Agreeable	Agreeable	Agreeable
Turbidity(NTU)	1.3	2.5	4.5	1	5
pH	6.84	6.56	7.03	6.5-8.5	No relaxation
Total Alkalinity(mg/L)	46.42	63.30	274.30	200	600
Chloride(mg/L)	19.43	27.79	85.35	250	1000
Sulphate(mg/L)	36.99	72.06	68.91	200	400
Nitrate(mg/L)	<0.5	1.38	2.94	45	No relaxation
Total Hardness (Ca CO ₃)(mg/L)	60.48	129.02	209.66	200	600
Calcium(mg/L)	11.20	44.80	64	75	200
Fluoride(mg/L)	0.47	0.72	0.23	1	1.5
Total Dissolve Solid(mg/L)	129	246	491	500	2000
Copper(mg/L)	<0.03	<0.03	<0.03	0.05	1.5
Manganese(mg/L)	<0.04	<0.04	0.09	0.1	0.3
Iron(mg/L)	<0.1	<0.1	<0.1	1.0	No relaxation
Zinc(mg/L)	<0.04	0.23	0.69	5	15
Lead(mg/L)	<0.005	<0.005	<0.005	0.01	No relaxation
Cadmium(mg/L)	<0.001	<0.001	<0.001	0.003	No relaxation
Total Chromium (mg/L)	<0.01	<0.01	<0.01	0.05	No relaxation
Arsenic(mg/L)	<0.005	<0.005	<0.005	0.01	No relaxation
Boron(mg/L)	<0.2	<0.2	<0.2	0.5	2.4

Handwritten signature

Authorised Signatory
CMPDI, RI-VII, LAB
BHUBANESWAR

Handwritten signature



सीएमपीडीआई
रिसेच लैब
cmpdi
Mini Bana

Drinking Water Quality Data Hingula Area

Project / OCP	Hingula OCP			Indian Drinking Standards (IS-10500):2012	
	Time Office Water	Gopalprasad Village Bore Well Water	Kumunda Village Bore Well Water	Acceptable	Permissible
Monitoring Station					
Date of Sampling	15-Jan-2026	15-Jan-2026	15-Jan-2026		
Selenium(mg/L)	<0.005	<0.005	<0.005	0.01	No relaxation
Sodium(mg/L)	9.34	12.63	5.28	-	-
Potassium(mg/L)	1.9	0.9	2.2	-	-
Phenolics(mg/L)	<0.001	<0.001	<0.001	0.001	0.002
Residual Free Chlorine(mg/L)	<0.2	<0.2	<0.2	0.2	1.0
MPN (Index/100 ml)	Not Detected	Not Detected	Not Detected	-	-

Tattwark
Authorised Signatory
CMPDI, RI-VII, LAB
BHUBANESWAR

Jyoti

Hingula OCP

Legend
Monitoring Station



Google Earth

**Environmental Monitoring Report
For
January-2026**

**Project: Balaram OCP
Area: Hingula
Coalfield: Talcher**



Mahanadi Coalfields Limited



Central Mine Planning & Design Institute Ltd.
(A Subsidiary of Coal India Ltd.)

Regional Institute-VII, Samantpuri, P.O : RRL, Bhubaneswar-751013 (Odisha)
[Assistance from Environment Division, CMPDI(HQs), Ranchi]

The test report shall not be reproduced in part or full without written approval of the competent authority



ଶିଳ୍ପାବଳୀ ଓ
 ଲାବ
 cmpdi
 ଭୁବନେଶ୍ୱର

Test Report

AMBIENT AIR QUALITY DATA

Area :

Hingula

(Compliance Station)

Project :

Balaram OCP

(conc. in $\mu\text{g}/\text{cu.m.}$)

Date of Sampling	Monitoring Station	SPM	PM10	PM2.5	SO2	NOx	CO (mg/m ³)	Dust Generating Source(DGS)	Distance from DGS
03-Jan-26	Pump House near Outsourcing Working Patch	259	183	74	13.11	33.66	-	Mining Operation And Coal Transportation	About 200m
07-Jan-26	Near Project Office	255	156	66	19.79	26.26	-	Mining Activities	About 500m
22-Jan-26	Near Project Office	247	145	63	19.08	28.23	-	Mining Activities	About 500m
22-Jan-26	Pump House near Outsourcing Working Patch	278	173	70	15.69	23.52	-	Mining Operation And Coal Transportation	About 200m

Jatanaik
 Authorised Signatory
 CMPDI, RI-VII, LAB
 BHUBANESWAR

Jamati

MoEF Standards Notification dated 25th September, 2000

600	300		120	120	92% (Hours)
-----	-----	--	-----	-----	-------------

AMBIENT AIR QUALITY DATA

Area :

Hingula

(Reference Station)

Project :

Balram OCP

(conc. in $\mu\text{g}/\text{cu.m.}$)

Date of Sampling	Monitoring Station	SPM	PM10	PM2.5	SO2	NOx	Dust Generating Source(DGS)	Distance from DGS
01-Jan-26	East of the Mine, Natedi Village	198	85	47	19.66	34.38	Coal Transportation Road	About 2km
01-Jan-26	Solda Village (Reported Only)	205	74	43	18.51	27.93	Coal Transportation Road	About 2km
01-Jan-26	Purnasahi Village	175	67	38	19.39	37.51	Mining Activities, Transportation	About 500m
01-Jan-26	Natada Village	217	87	49	20.78	34.66	Anthropogenic Activities, Local Road	About 2km
02-Jan-26	East of the Mine, Natedi Village	224	80	43	14.54	25.51	Coal Transportation Road	About 2km
02-Jan-26	Purnasahi Village	199	82	46	17.39	26.79	Mining Activities, Transportation	About 500m
02-Jan-26	Solda Village (Reported Only)	213	88	48	22.90	29.94	Coal Transportation Road	About 2km
02-Jan-26	Natada Village	208	86	48	19.66	29.36	Anthropogenic Activities, Local Road	About 2km
05-Jan-26	Khajuria Village (Reported Only)	207	81	48	22.48	39.39	Mining Activities	About 1 KM
05-Jan-26	Kurihan Village (Reported Only)	224	93	51	18.58	33.76	Mining Activities	About 500m
06-Jan-26	Kurihan Village (Reported Only)	220	83	45	17.77	30.76	Mining Activities	About 500m
06-Jan-26	Khajuria Village (Reported Only)	204	83	46	19.93	22.85	Mining Activities	About 1 KM
08-Jan-26	Purnasahi Village	183	75	41	16.96	25.21	Mining Activities, Transportation	About 500m
08-Jan-26	Solda Village (Reported Only)	198	83	46	21.41	36.76	Coal Transportation Road	About 2km
08-Jan-26	Natada Village	194	82	45	24.97	42.02	Anthropogenic Activities, Local Road	About 2km
08-Jan-26	East of the Mine, Natedi Village	199	86	46	17.41	35.66	Coal Transportation Road	About 2km
09-Jan-26	East of the Mine, Natedi Village	229	89	50	13.11	20.05	Coal Transportation Road	About 2km

*NAAQS, 2009

100 80 80 80

Project :

Balram OCP

(conc. in $\mu\text{g}/\text{cu.m.}$)

Date of Sampling	Monitoring Station	SPM	PM10	PM2.5	SO2	NOx	Dust Generating Source(DGS)	Distance from DGS
09-Jan-26	Solda Village (Reported Only)	193	81	44	22.21	29.26	Coal Transportation Road	About 2km
09-Jan-26	Natada Village	237	89	51	16.56	32.26	Anthropogenic Activities, Local Road	About 2km
09-Jan-26	Purnasahi Village	214	85	49	22.21	27.76	Mining Activities, Transportation	About 500m
12-Jan-26	Kurihan Village (Reported Only)	219	89	50	21.41	22.51	Mining Activities	About 500m
12-Jan-26	Khajuria Village (Reported Only)	229	92	53	24.60	30.72	Mining Activities	About 1 KM
13-Jan-26	Kurihan Village (Reported Only)	208	85	46	16.16	26.26	Mining Activities	About 500m
13-Jan-26	Khajuria Village (Reported Only)	213	88	50	15.04	33.66	Mining Activities	About 1 KM
16-Jan-26	East of the Mine, Natedi Village	198	79	44	14.42	33.72	Coal Transportation Road	About 2km
16-Jan-26	Natada Village	209	84	47	19.64	40.45	Anthropogenic Activities, Local Road	About 2km
16-Jan-26	Purnasahi Village	194	73	41	22.05	33.72	Mining Activities, Transportation	About 500m
16-Jan-26	Solda Village (Reported Only)	199	84	46	13.15	19.60	Coal Transportation Road	About 2km
17-Jan-26	Purnasahi Village	203	77	44	13.39	34.67	Mining Activities, Transportation	About 500m
17-Jan-26	Solda Village (Reported Only)	209	93	50	11.03	34.50	Coal Transportation Road	About 2km
17-Jan-26	East of the Mine, Natedi Village	213	86	49	12.95	35.49	Coal Transportation Road	About 2km
17-Jan-26	Natada Village	186	73	42	18.24	36.07	Anthropogenic Activities, Local Road	About 2km
19-Jan-26	Khajuria Village (Reported Only)	196	82	47	19.20	33.84	Mining Activities	About 1 KM
19-Jan-26	Kurihan Village (Reported Only)	203	83	47	18.66	19.60	Mining Activities	About 500m
20-Jan-26	Khajuria Village (Reported Only)	205	76	42	19.64	33.84	Mining Activities	About 1 KM
20-Jan-26	Kurihan Village (Reported Only)	198	79	46	17.81	28.23	Mining Activities	About 500m

*N44(QS.2009)

100 60 80 80

Authorised Signatory
 C.M.P.O., RI-VII, LAB
 BHUBANESWAR

Project :

Balram OCP

(conc. in $\mu\text{g}/\text{cu.m.}$)

Date of Sampling	Monitoring Station	SPM	PM10	PM2.5	SO2	NOx	Dust Generating Source(DGS)	Distance from DGS
23-Jan-26	East of the Mine, Natedi Village	226	88	51	22.77	21.46	Coal Transportation Road	About 2km
23-Jan-26	Natada Village	197	78	44	12.05	41.27	Anthropogenic Activities, Local Road	About 2km
23-Jan-26	Purnasahi Village	214	88	49	17.81	39.21	Mining Activities, Transportation	About 500m
23-Jan-26	Solda Village (Reported Only)	181	71	37	21.20	30.58	Coal Transportation Road	About 2km
24-Jan-26	Natada Village	208	84	48	19.51	27.45	Anthropogenic Activities, Local Road	About 2km
24-Jan-26	Solda Village (Reported Only)	201	82	45	16.52	33.02	Coal Transportation Road	About 2km
24-Jan-26	East of the Mine, Natedi Village	203	84	48	19.20	31.37	Coal Transportation Road	About 2km
24-Jan-26	Purnasahi Village	186	72	39	20.98	36.32	Mining Activities, Transportation	About 500m
27-Jan-26	Khajuria Village (Reported Only)	210	85	48	19.64	37.97	Mining Activities	About 1 KM
27-Jan-26	Kurihan Village (Reported Only)	189	76	43	11.45	24.31	Mining Activities	About 500m
28-Jan-26	Khajuria Village (Reported Only)	219	90	49	12.50	25.59	Mining Activities	About 1 KM
28-Jan-26	Kurihan Village (Reported Only)	205	84	48	16.52	34.67	Mining Activities	About 500m
30-Jan-26	Solda Village (Reported Only)	184	74	40	20.36	38.42	Coal Transportation Road	About 2km
30-Jan-26	Purnasahi Village	206	77	48	11.45	28.23	Mining Activities, Transportation	About 500m
30-Jan-26	East of the Mine, Natedi Village	197	79	44	19.08	30.58	Coal Transportation Road	About 2km
30-Jan-26	Natada Village	227	88	51	22.32	37.97	Anthropogenic Activities, Local Road	About 2km
31-Jan-26	Purnasahi Village	175	73	42	12.95	25.59	Mining Activities, Transportation	About 500m
31-Jan-26	East of the Mine, Natedi Village	206	86	49	20.53	24.76	Coal Transportation Road	About 2km
31-Jan-26	Solda Village (Reported Only)	194	81	43	14.42	19.60	Coal Transportation Road	About 2km

*N44QS.2099

100 00 80 80

Fathmah
 Authorised Signatory
 CMPDI, RI-VII, LAB
 Bhubaneswar

Janaki

Project :

Balram OCP

(conc. in $\mu\text{g}/\text{cu.m.}$)

<i>Date of Sampling</i>	<i>Monitoring Station</i>	<i>SPM</i>	<i>PM10</i>	<i>PM2.5</i>	<i>SO2</i>	<i>NOx</i>	<i>Dust Generating Source(DGS)</i>	<i>Distance from DGS</i>
31-Jan-26	Natada Village	181	75	42	11.03	25.88	Anthropogenic Activities, Local Road	About 2km

F. Pattanayak
Authorized Signatory
CMPD, NI-VII, LAB
BHUBANESWAR

Jamali

TV-L-05, 2009

100

60

80

80



சீர்தரமதிப்பீடு
 சி.டி.பி.டி.
 Bhubaneswar

Test Report

AMBIENT AIR QUALITY DATA (NAAQS PARAMETER)

Area :

Hingula

Project :

Balram OCP

Date of Sampling	Monitoring Station	Ammonia (NH ₃)	Ozone (O ₃)	Lead (Pb)	Arsenic (As)	Nickel (Ni)	CO	Benzo(a)Pyrene	Benzene
		(µg/m ³)	(µg/m ³)	(µg/m ³)	(ng/m ³)	(ng/m ³)	(mg/m ³)	(ng/m ³)	(µg/m ³)
01-Jan-26	Natada Village	<20.0	26.30	<0.1	<1.0	<1.0	1.2	BQL(QL)=0.7)	BQL
01-Jan-26	Solda Village (Reported Only)	<20.0	27.28	<0.1	<1.0	<1.0	1.7	BQL(QL)=0.7)	BQL
01-Jan-26	Purunasahi Village	<20.0	12.05	<0.1	<1.0	<1.0	1.2	BQL(QL)=0.7)	BQL
01-Jan-26	East of the Mine, Natedi Village	<20.0	22.87	<0.1	<1.0	<1.0	1.1	BQL(QL)=0.7)	BQL
02-Jan-26	Natada Village	<20.0	17.45	<0.1	<1.0	<1.0	1.2	BQL(QL)=0.7)	BQL
02-Jan-26	Purunasahi Village	<20.0	12.78	<0.1	<1.0	<1.0	1.0	BQL(QL)=0.7)	BQL
02-Jan-26	East of the Mine, Natedi Village	<20.0	27.78	<0.1	<1.0	<1.0	1.1	BQL(QL)=0.7)	BQL
02-Jan-26	Solda Village (Reported Only)	<20.0	21.38	<0.1	<1.0	<1.0	1.7	BQL(QL)=0.7)	BQL
05-Jan-26	Khajuria Village (Reported Only)	<20.0	26.05	<0.1	<1.0	<1.0	1.6	BQL(QL)=0.7)	BQL
05-Jan-26	Kurihan Village (Reported Only)	<20.0	13.27	<0.1	<1.0	<1.0	1.3	BQL(QL)=0.7)	BQL
06-Jan-26	Kurihan Village (Reported Only)	<20.0	12.78	<0.1	<1.0	<1.0	1.7	BQL(QL)=0.7)	BQL
06-Jan-26	Khajuria Village (Reported Only)	<20.0	26.55	<0.1	<1.0	<1.0	1.5	BQL(QL)=0.7)	BQL
08-Jan-26	Solda Village (Reported Only)	<20.0	23.60	<0.1	<1.0	<1.0	1.8	BQL(QL)=0.7)	BQL
08-Jan-26	Natada Village	<20.0	14.50	<0.1	<1.0	<1.0	1.7	BQL(QL)=0.7)	BQL
08-Jan-26	East of the Mine, Natedi Village	<20.0	26.80	<0.1	<1.0	<1.0	1.1	BQL(QL)=0.7)	BQL
08-Jan-26	Purunasahi Village	<20.0	27.28	<0.1	<1.0	<1.0	1.5	BQL(QL)=0.7)	BQL
09-Jan-26	East of the Mine, Natedi Village	<20.0	21.38	<0.1	<1.0	<1.0	1.0	BQL(QL)=0.7)	BQL
09-Jan-26	Solda Village (Reported Only)	<20.0	21.13	<0.1	<1.0	<1.0	1.1	BQL(QL)=0.7)	BQL
09-Jan-26	Purunasahi Village	<20.0	27.78	<0.1	<1.0	<1.0	1.5	BQL(QL)=0.7)	BQL
09-Jan-26	Natada Village	<20.0	11.07	<0.1	<1.0	<1.0	1.1	BQL(QL)=0.7)	BQL
12-Jan-26	Khajuria Village (Reported Only)	<20.0	21.13	<0.1	<1.0	<1.0	1.2	BQL(QL)=0.7)	BQL
12-Jan-26	Kurihan Village (Reported Only)	<20.0	11.30	<0.1	<1.0	<1.0	1.7	BQL(QL)=0.7)	BQL
13-Jan-26	Kurihan Village (Reported Only)	<20.0	22.37	<0.1	<1.0	<1.0	1.7	BQL(QL)=0.7)	BQL
13-Jan-26	Khajuria Village (Reported Only)	<20.0	12.53	<0.1	<1.0	<1.0	1.2	BQL(QL)=0.7)	BQL

Standard	400(24 hours)	180(hours)	1.0(24 hours)	6.0(Annual)	20(Annual)	02(8 hours)	01(annual)	05(annual)
----------	---------------	------------	---------------	-------------	------------	-------------	------------	------------

Authorised Signatory
 CMPDI, RI-VII, LAB
 BHUBANESWAR

Signature

Project :

Balram OCP

Date of Sampling	Monitoring Station	Ammonia(NH ₃)	Ozone(O ₃)	Lead(Pb)	Arsenic(As)	Nickel(Ni)	CO	Benzo(a)Pyrene	Benzene
		(µg/m ³)	(µg/m ³)	(µg/m ³)	(ng/m ³)	(ng/m ³)	(mg/m ³)	(ng/m ³)	(µg/m ³)
16-Jan-26	Solda Village (Reported Only)	<20.0	23.35	<0.1	<1.0	<1.0	1.3	BQL(QL)=0.7)	BQL
16-Jan-26	East of the Mine, Natedi Village	<20.0	12.05	<0.1	<1.0	<1.0	1.1	BQL(QL)=0.7)	BQL
16-Jan-26	Purnasahi Village	<20.0	14.25	<0.1	<1.0	<1.0	1.4	BQL(QL)=0.7)	BQL
16-Jan-26	Natada Village	<20.0	18.68	<0.1	<1.0	<1.0	1.5	BQL(QL)=0.7)	BQL
17-Jan-26	Natada Village	<20.0	28.27	<0.1	<1.0	<1.0	1.4	BQL(QL)=0.7)	BQL
17-Jan-26	East of the Mine, Natedi Village	<20.0	19.92	<0.1	<1.0	<1.0	1.6	BQL(QL)=0.7)	BQL
17-Jan-26	Solda Village (Reported Only)	<20.0	18.93	<0.1	<1.0	<1.0	1.7	BQL(QL)=0.7)	BQL
17-Jan-26	Purnasahi Village	<20.0	11.30	<0.1	<1.0	<1.0	1.2	BQL(QL)=0.7)	BQL
19-Jan-26	Kurihan Village (Reported Only)	<20.0	22.87	<0.1	<1.0	<1.0	1.1	BQL(QL)=0.7)	BQL
19-Jan-26	Khajuria Village (Reported Only)	<20.0	14.02	<0.1	<1.0	<1.0	1.4	BQL(QL)=0.7)	BQL
20-Jan-26	Kurihan Village (Reported Only)	<20.0	17.95	<0.1	<1.0	<1.0	1.0	BQL(QL)=0.7)	BQL
20-Jan-26	Khajuria Village (Reported Only)	<20.0	13.77	<0.1	<1.0	<1.0	1.3	BQL(QL)=0.7)	BQL
23-Jan-26	Solda Village (Reported Only)	<20.0	25.32	<0.1	<1.0	<1.0	1.7	BQL(QL)=0.7)	BQL
23-Jan-26	Natada Village	<20.0	24.58	<0.1	<1.0	<1.0	1.4	BQL(QL)=0.7)	BQL
23-Jan-26	East of the Mine, Natedi Village	<20.0	19.42	<0.1	<1.0	<1.0	1.5	BQL(QL)=0.7)	BQL
23-Jan-26	Purnasahi Village	<20.0	12.05	<0.1	<1.0	<1.0	1.4	BQL(QL)=0.7)	BQL
24-Jan-26	Solda Village (Reported Only)	<20.0	19.42	<0.1	<1.0	<1.0	1.4	BQL(QL)=0.7)	BQL
24-Jan-26	Purnasahi Village	<20.0	12.05	<0.1	<1.0	<1.0	1.2	BQL(QL)=0.7)	BQL
24-Jan-26	East of the Mine, Natedi Village	<20.0	13.27	<0.1	<1.0	<1.0	1.2	BQL(QL)=0.7)	BQL
24-Jan-26	Natada Village	<20.0	17.20	<0.1	<1.0	<1.0	1.4	BQL(QL)=0.7)	BQL
27-Jan-26	Kurihan Village (Reported Only)	<20.0	24.33	<0.1	<1.0	<1.0	1.3	BQL(QL)=0.7)	BQL
27-Jan-26	Khajuria Village (Reported Only)	<20.0	11.30	<0.1	<1.0	<1.0	1.5	BQL(QL)=0.7)	BQL
28-Jan-26	Khajuria Village (Reported Only)	<20.0	25.07	<0.1	<1.0	<1.0	1.0	BQL(QL)=0.7)	BQL
28-Jan-26	Kurihan Village (Reported Only)	<20.0	26.80	<0.1	<1.0	<1.0	1.3	BQL(QL)=0.7)	BQL
30-Jan-26	Solda Village (Reported Only)	<20.0	23.35	<0.1	<1.0	<1.0	1.8	BQL(QL)=0.7)	BQL
30-Jan-26	East of the Mine, Natedi Village	<20.0	18.18	<0.1	<1.0	<1.0	1.3	BQL(QL)=0.7)	BQL
30-Jan-26	Natada Village	<20.0	24.33	<0.1	<1.0	<1.0	1.7	BQL(QL)=0.7)	BQL
30-Jan-26	Purnasahi Village	<20.0	27.28	<0.1	<1.0	<1.0	1.4	BQL(QL)=0.7)	BQL

Standard	400(24 hours)	150(hours)	1.0(24 hours)	6.0(Annual)	20(Annual)	02(8 hours)	01(annual)	05(annual)
----------	---------------	------------	---------------	-------------	------------	-------------	------------	------------

Project :

Balram OCP

Date of Sampling	Monitoring Station	Ammonia(NH ₃)	Ozone(O ₃)	Lead(Pb)	Arsenic(As)	Nickel(Ni)	CO	Benzo(a)Pyrene	Benzene
		(µg/m ³)	(µg/m ³)	(µg/m ³)	(ng/m ³)	(ng/m ³)	(ng/m ³)	(ng/m ³)	(µg/m ³)
31-Jan-26	Natada Village	<20.0	23.10	<0.1	<1.0	<1.0	1.6	BQL(QL)=0.7)	BQL
31-Jan-26	East of the Mine, Natedi Village	<20.0	22.12	<0.1	<1.0	<1.0	1.4	BQL(QL)=0.7)	BQL
31-Jan-26	Purunasahi Village	<20.0	15.73	<0.1	<1.0	<1.0	1.4	BQL(QL)=0.7)	BQL
31-Jan-26	Solda Village (Reported Only)	<20.0	15.23	<0.1	<1.0	<1.0	1.7	BQL(QL)=0.7)	BQL

Standard	400(24hrs)	180(hours)	1.0(24hours)	6.0(Annual)	20(Annual)	02(8hours)	01(annual)	05(annual)
----------	------------	------------	--------------	-------------	------------	------------	------------	------------

Signature
Authorised Signatory
CMPDI, RI-VII, LAB
BHUBANESWAR

Signature



सीएनपीडीआई
के.पी.सी.
cmpdi
एन.ए.सी.

TABLE--

NOISE LEVEL MONITORING DATA

AREA :

Hingula

PROJECT :

Balaram OCP

DATE OF SAMPLING	STATION	Noise Level Measurement in Leq dB(A)	
		DAY	NIGHT
15-Jan-26	Natada Village	44.8	36.2
15-Jan-26	Solada Village (Reported only)	45.3	38.7
15-Jan-26	Near Natedi Village	46.7	36.1
15-Jan-26	Pump House Near Outsourcing Working Patch	62.9	52.7
15-Jan-26	Near Project Office Balram OCP	65.7	53.4
29-Jan-26	Natada Village	44.9	34.2
29-Jan-26	Solada Village (Reported only)	52.9	41.1
29-Jan-26	Near Natedi Village	46.7	36.7
29-Jan-26	Pump House Near Outsourcing Working Patch	68.3	50.3
29-Jan-26	Near Project Office Balram OCP	67.7	55.3

MoEF Standard Notification dated 25th September, 2000	6.00 AM -10.00 PM Leq 75dB(A) (Industrial)	10.00 PM -6.00 AM Leq 70dB(A) (Industrial)
MoEF Standard Notification dated 25th September, 2000	6.00 AM -10.00 PM Leq 55dB(A) (Residential)	10.00 PM -6.00 AM Leq 45dB(A) (Residential)
MoEF Standard Notification dated 25th September, 2000	6.00 AM -10.00 PM Leq 65dB(A) (Commercial)	10.00 PM -6.00 AM Leq 55dB(A) (Commercial)
MoEF Standard Notification dated 25th September, 2000	6.00 AM -10.00 PM Leq 50dB(A) (Silence Zone)	10.00 PM -6.00 AM Leq 40dB(A) (Silence Zone)

T. J. Mohan
Authorised Signatory
CMPDI, RI-VII, LAB
BHUBANESWAR

J. S. Jena



सीएनपीडीआई
एन एन
cmpdi
एन एन

TABLE-

EFFLUENT QUALITY DATA

Area :

Hingula

(All dimensions are in mg/l unless otherwise stated except pH)

Project :

Balram OCP

Date of Sampling	Sampling Station	pH	Oil & Grease	TSS	COD	BOD	Remarks
15-Jan-26	Gandhisagar (Mine Sump)	7.61	<4.0	26	20	-	
15-Jan-26	Inlet of O & G Trap	7.57	<4.0	34	28	-	
15-Jan-26	Outlet of O & G Trap	6.55	<4.0	26	20	-	
31-Jan-26	Inlet of O & G Trap	6.72	<4.0	30	32	-	
31-Jan-26	Outlet of O & G Trap	6.72	<4.0	30	32	-	

Fattamish
Authorized Signatory
CMPDI, RI-VII, LAB
BHUBANESWAR

Jasmit

MoEF Standard Notification dated 25th September, 2000
and MoEF Schedule VI, General standard for discharge
of Environmental Pollutants Part A: Effluents

5.5-9.0 10 100 250 30



सीएनपीडीआई
1986-87
cmpdi
Central Pollution Control Board

Test Report

EFFLUENT QUALITY DATA

Area :

Hingula

(All dimensions are in mg/l unless otherwise stated except pH)

Project :

Balram OCP

Date of Sampling	Sampling Station	pH	Oil & Grease	TSS	COD	BOD	MPN/100mL
15-Jan-26	STP Inlet of Balram Colony	6.94	-	42	-	4.4	240
15-Jan-26	STP Outlet of Balram Colony	7.05	-	38	-	2.5	130
31-Jan-26	STP Inlet of Balram Colony	7.23	-	48	-	3.6	350
31-Jan-26	STP Outlet of Balram Colony	7.16	-	32	-	2.5	170

Jattanait
Authorized Signatory
Cmpdi, RLVN, LAS
BHUBANESWAR

Jattanait

G.S.R. 1265(E) Effluent discharge standards (applicable to all mode of disposal), Sewage Treatment Plants (STPs)

6.5-9.0

-

<100

-

30

<1000



सीएमपीडीआई
मिनी लैब
cmpdi
Mini Lab

Drinking Water Quality Data Hingula Area

Project / OCP	Balaram OCP			Indian Drinking Standards (IS-10500):2012	
	Danara Village Borewell Water	Balaram Colony	Nakeipasi Village Bore Well Water		
Monitoring Station				Acceptable	Permissible
Date of Sampling	15-Jan-2026	15-Jan-2026	15-Jan-2026	5	15
Colour(Hazen)	1	2	3	Agreeable	Agreeable
Odour	Agreeable	Agreeable	Agreeable	Agreeable	Agreeable
Taste	Agreeable	Agreeable	Agreeable	Agreeable	Agreeable
Turbidity(NTU)	2.6	3.5	2.7	1	5
pH	6.70	7.18	6.99	6.5-8.5	No relaxation
Total Alkalinity(mg/L)	67.58	92.84	109.72	200	600
Chloride(mg/L)	23.82	19.85	31.76	250	1000
Sulphate(mg/L)	60.96	103.02	51.1	200	400
Nitrate(mg/L)	10.80	4.36	7.43	45	No relaxation
Total Hardness (Ca CO ₃)(mg/L)	141.12	169.34	173.37	200	600
Calcium(mg/L)	33.60	43.20	49.60	75	200
Fluoride(mg/L)	0.45	0.74	0.60	1	1.5
Total Dissolve Solid(mg/L)	217	313	275	500	2000
Copper(mg/L)	<0.03	<0.03	<0.03	0.05	1.5
Manganese(mg/L)	<0.04	<0.04	0.15	0.1	0.3
Iron(mg/L)	<0.1	<0.1	<0.1	1.0	No relaxation
Zinc(mg/L)	<0.04	<0.04	1.68	5	15
Lead(mg/L)	<0.005	<0.005	<0.005	0.01	No relaxation
Cadmium(mg/L)	<0.001	<0.001	<0.001	0.003	No relaxation
Total Chromium (mg/L)	<0.01	<0.01	<0.01	0.05	No relaxation
Arsenic(mg/L)	<0.005	<0.005	<0.005	0.01	No relaxation
Boron(mg/L)	<0.2	<0.2	<0.2	0.5	2.4

H. K. Saini
Authorized Signatory
CMPDI, RI-VII, LAB
BHUBANESWAR

J. Saini



सीएमपीडीआई
रिपो रल
cmpdi
Mini labno

Drinking Water Quality Data Hingula Area

Project / OCP	Balaram OCP			Indian Drinking Standards (IS-10500):2012	
	Danara Village Borewell Water	Balaram Colony	Nakeipasi Village Bore Well Water	Acceptable	Permissible
Date of Sampling	15-Jan-2026	15-Jan-2026	15-Jan-2026	Acceptable	Permissible
Selenium(mg/L)	<0.005	<0.005	<0.005	0.01	No relaxation
Sodium(mg/L)	8.1	13.32	4.37	-	-
Potassium(mg/L)	2.92	3.04	2.46	-	-
Phenolics(mg/L)	<0.001	<0.001	<0.001	0.001	0.002
Residual Free Chlorine(mg/L)	<0.2	<0.2	<0.2	0.2	1.0
MPN (Index/100 ml)	Not Detected	Not Detected	Not Detected	-	-

Santhana
Authorised Signatory
CMPDI, RI-VI, LAB
BHUBANESWAR

Jasmati

Balram OCP



Legend

Monitoring Station

Google Earth

**Environmental Monitoring Report
For
January-2026**

**Project: Talcher Colliery
Area: Talcher
Coalfield: Talcher**



Mahanadi Coalfields Limited



Central Mine Planning & Design Institute Ltd.
(A Subsidiary of Coal India Ltd.)

Regional Institute-VII, Samantpuri, P.O : RRL, Bhubaneswar-751013 (Odisha)
[Assistance from Environment Division, CMPDI(HQs), Ranchi]

The test report shall not be reproduced in part or full without written approval of the competent authority



सीएनपीडी
 1980-74
cmpdi
 सर्वोत्तम

Test Report

AMBIENT AIR QUALITY DATA

Area :

Talcher

(Compliance Station)

Project :

Talcher Colliery

(conc. in $\mu\text{g}/\text{cu.m.}$)

Date of Sampling	Monitoring Station	SPM	PM10	PM2.5	SO2	NOx	CO (mg/m ³)	Dust Generating Source(DGS)	Distance from DGS
07-Jan-26	Near Canteen Talcher Colliery	274	166	70	20.78	26.79	-	Local Transportation	About 500m
07-Jan-26	Officer Club, Talcher Area	257	165	68	17.77	30.01	-	Mining Activities, Ananta, Lingaraj	About 1000m
22-Jan-26	Near Canteen Talcher Colliery	246	147	62	13.39	34.67	-	Local Transportation	About 500m
22-Jan-26	Officer Club, Talcher Area	273	177	68	14.84	21.96	-	Mining Activities, Ananta, Lingaraj	About 1000m

Y. K. Sahoo
 Authorized Signatory
 CMPDI, RI-VII, LAB
 BHUBANESWAR

J. Sahoo

MoEF Standards Notification dated 25th September, 2009

600	300		120	120	02/8 Hours
-----	-----	--	-----	-----	------------



सीएनपीडीआई
CMPDI
CENTRAL POLLUTION CONTROL BOARD

TABLE-

NOISE LEVEL MONITORING DATA

AREA :

Talcher

PROJECT :

Talcher Colliery

DATE OF SAMPLING	STATION	Noise Level Measurement in Leq dB(A)	
		DAY	NIGHT
14-Jan-26	Officers Club, Talcher Area	57.9	46.9
14-Jan-26	Near Canteen, Talcher Colliery	58.2	52.4
30-Jan-26	Officers Club, Talcher Area	60.7	50.1
30-Jan-26	Near Canteen, Talcher Colliery	61.3	50.9

MoEF Standard Notification dated 25th September, 2000	6.00 AM -10.00 PM Leq 75dB(A) (Industrial)	10.00 PM -6.00 AM Leq 70dB(A) (Industrial)
MoEF Standard Notification dated 25th September, 2000	6.00 AM -10.00 PM Leq 55dB(A) (Residential)	10.00 PM -6.00 AM Leq 45dB(A) (Residential)
MoEF Standard Notification dated 25th September, 2000	6.00 AM -10.00 PM Leq 65dB(A) (Commercial)	10.00 PM -6.00 AM Leq 55dB(A) (Commercial)
MoEF Standard Notification dated 25th September, 2000	6.00 AM -10.00 PM Leq 50dB(A) (Silence Zone)	10.00 PM -6.00 AM Leq 40dB(A) (Silence Zone)

Test avail
Authorised Signatory
CMPDI, RI-VII, LAB
BHUBANESWAR

Janak

TABLE-



सीएनपीडीआई
 with an
cmpdi
 India's Future

EFFLUENT QUALITY DATA

Area :

Talcher

(All dimensions are in mg/l unless otherwise stated except pH)

Project :

Talcher Colliery

Date of Sampling	Sampling Station	pH	Oil & Grease	TSS	COD	BOD	Remarks
15-Jan-26	Talcher Colliery Sedimentation Tank Discharge	6.19	<4.0	24	12	-	
31-Jan-26	Talcher Colliery Sedimentation Tank Discharge	6.26	<4.0	28	20	-	

K. S. Nayak
 Authorized Signatory
 CMPDI, RI-VII, LAB
 BHUBANESWAR

Janak

MoEF Standard Notification dated 25th September, 2000
 and MoEF Schedule VI, General standard for discharge
 of Environmental Pollutants Part A: Effluents

5.5-9.0	10	100	250	30
---------	----	-----	-----	----



सीएमपीडीआई
रिसेच लैब
cmpdi
Mini Ratna

Drinking Water Quality Data Talcher Area

Project / OCP Monitoring Station	Talcher U/G		Indian Drinking Standards (IS-10500):2012	
	Canteen Water, GM Office	Canteen, Talcher Colliery	Acceptable	Permissible
Date of Sampling	15-Jan-2026	15-Jan-2026		
Colour(Hazen)	2	2	5	15
Odour	Agreeable	Agreeable	Agreeable	Agreeable
Taste	Agreeable	Agreeable	Agreeable	Agreeable
Turbidity(NTU)	1.6	2.3	1	5
pH	7.46	7.25	6.5-8.5	No relaxation
Total Alkalinity(mg/L)	54.86	54.86	200	600
Chloride(mg/L)	31.76	27.79	250	1000
Sulphate(mg/L)	20.822	64.79	200	400
Nitrate(mg/L)	4.93	7.33	45	No relaxation
Total Hardness (Ca CO ₃)(mg/L)	64.51	129.02	200	600
Calcium(mg/L)	16	32	75	200
Fluoride(mg/L)	0.44	0.37	1	1.5
Total Dissolve Solid(mg/L)	124	219	500	2000
Copper(mg/L)	<0.03	<0.03	0.05	1.5
Manganese(mg/L)	<0.04	<0.04	0.1	0.3
Iron(mg/L)	<0.1	<0.1	1.0	No relaxation
Zinc(mg/L)	<0.04	0.05	5	15
Lead(mg/L)	<0.005	<0.005	0.01	No relaxation
Cadmium(mg/L)	<0.001	<0.001	0.003	No relaxation
Total Chromium (mg/L)	<0.01	<0.01	0.05	No relaxation
Arsenic(mg/L)	<0.005	<0.005	0.01	No relaxation
Boron(mg/L)	<0.2	<0.2	0.5	2.4

T. Anand
Authorized Signatory
CMPDI, RI-VII, LAB
BHUBANESWAR

Janak



सीएमपीडीआई
मिनी एन
cmpdi
MINI ENA

Drinking Water Quality Data Talcher Area

Project / OCP	Talcher U/G		Indian Drinking Standards (IS-10500):2012	
	Canteen Water, GM Office	Canteen, Talcher Colliery	Acceptable	Permissible
Monitoring Station				
Date of Sampling	15-Jan-2026	15-Jan-2026		
Selenium(mg/L)	<0.005	<0.005	0.01	No relaxation
Sodium(mg/L)	8.69	2.08	-	-
Potassium(mg/L)	3.02	1.08	-	-
Phenolics(mg/L)	<0.001	<0.001	0.001	0.002
Residual Free Chlorine(mg/L)	<0.2	<0.2	0.2	1.0
MPN (Index/100 ml)	Not Detected	Not Detected	-	-

Shubaneswar
Authorized Signatory
CMPDI, RI-VII, LAB
SHUBANESWAR

Januete

Talcher Air Stations

Talcher Air monitoring stations



Google Earth

Images © 2021 Maxar, Earthstar
© 2021 Google

**Environmental Monitoring Report
For
January-2026**

**Project: Nandira Colliery
Area: Talcher
Coalfield: Talcher**



Mahanadi Coalfields Limited



Central Mine Planning & Design Institute Ltd.
(A Subsidiary of Coal India Ltd.)

Regional Institute-VII, Samantpuri, P.O : RRL, Bhubaneswar-751013 (Odisha)
[Assistance from Environment Division, CMPDI(HQs), Ranchi]

The test report shall not be reproduced in part or full without written approval of the competent authority



सौरजपीडीआई
 १९९४
cmpdi
 and more

Test Report

AMBIENT AIR QUALITY DATA

Area :

Talcher

(Compliance Station)

Project :

Nandira Colliery

(conc. in $\mu\text{g}/\text{cu.m.}$)

Date of Sampling	Monitoring Station	SPM	PM10	PM2.5	SO2	NOx	CO (mg/m ³)	Dust Generating Source(DGS)	Distance from DGS
07-Jan-26	Project Office	274	158	67	22.21	21.01	-	Mining Activities, Transportation, CHP	About 500m
07-Jan-26	Sub-station	276	159	66	13.49	25.78	-	Transportation & Railway Sidings of	About 500m
22-Jan-26	Project Office	249	141	62	20.09	23.11	-	Mining Activities, Transportation, CHP	About 500m
22-Jan-26	Sub-station	261	169	67	13.57	38.42	-	Transportation & Railway Sidings of	About 500m

T. H. H. H.
 Authorized Signatory
 CMPDI, RI-VII, LAB
 BHUBANESWAR

J. H. H.

MoEP Standards Notification dated 25th September, 2000	600	300		120	120	02(8 Hours)
--	-----	-----	--	-----	-----	-------------



सीएनपीडी
 CMPDI
 1987-88

Test Report

AMBIENT AIR QUALITY DATA

Area :

Talcher

(Reference Station)

Project :

Nandira Colliery

(conc. in $\mu\text{g}/\text{cu.m.}$)

Date of Sampling	Monitoring Station	SPM	PM10	PM2.5	SO ₂	NO _x	Dust Generating Source(DGS)	Distance from DGS
01-Jan-26	Nandira Colony	198	76	43	20.43	37.24	Local Transportation, Mining Activities etc.	About 500m
01-Jan-26	East of the Mine, Natedi Village (Reported Only)	198	85	47	19.66	34.38	Coal Transportation Road	About 2km
02-Jan-26	East of the Mine, Natedi Village (Reported Only)	224	80	43	14.54	25.51	Coal Transportation Road	About 2km
02-Jan-26	Nandira Colony	209	85	47	20.09	28.19	Local Transportation, Mining Activities etc.	About 500m
08-Jan-26	East of the Mine, Natedi Village (Reported Only)	199	86	46	17.41	35.66	Coal Transportation Road	About 2km
08-Jan-26	Nandira Colony	203	82	45	18.89	21.49	Local Transportation, Mining Activities etc.	About 500m
09-Jan-26	East of the Mine, Natedi Village (Reported Only)	229	89	50	13.11	20.05	Coal Transportation Road	About 2km
09-Jan-26	Nandira Colony	235	92	51	17.73	33.66	Local Transportation, Mining Activities etc.	About 500m
16-Jan-26	East of the Mine, Natedi Village (Reported Only)	198	79	44	14.42	33.72	Coal Transportation Road	About 2km
16-Jan-26	Nandira Colony	205	80	44	21.63	29.01	Local Transportation, Mining Activities etc.	About 500m
17-Jan-26	East of the Mine, Natedi Village (Reported Only)	213	86	49	12.95	35.49	Coal Transportation Road	About 2km
17-Jan-26	Nandira Colony	213	83	47	17.81	31.37	Local Transportation, Mining Activities etc.	About 500m
23-Jan-26	Nandira Colony	228	93	51	14.84	34.50	Local Transportation, Mining Activities etc.	About 500m
23-Jan-26	East of the Mine, Natedi Village (Reported Only)	226	88	51	22.77	21.46	Coal Transportation Road	About 2km
24-Jan-26	East of the Mine, Natedi Village (Reported Only)	203	84	48	19.20	31.37	Coal Transportation Road	About 2km
24-Jan-26	Nandira Colony	223	85	48	13.15	34.50	Local Transportation, Mining Activities etc.	About 500m
30-Jan-26	East of the Mine, Natedi Village (Reported Only)	197	79	44	19.08	30.58	Coal Transportation Road	About 2km

*N/A/QS.2009

100	80	80	80
-----	----	----	----

Authorised Signatory
 CMPDI, RI-VII, LAB
 SHUBANESWAR

Janaki

Project :

Nandira Colliery

(conc. in $\mu\text{g}/\text{cu.m.}$)

Date of Sampling	Monitoring Station	SPM	PM10	PM2.5	SO2	NOx	Dust Generating Source(DGS)	Distance from DGS
30-Jan-26	Nandira Colony	190	78	43	17.81	20.39	Local Transportation, Mining Activities etc.	About 500m
31-Jan-26	Nandira Colony	182	74	40	12.30	30.58	Local Transportation, Mining Activities etc.	About 500m
31-Jan-26	East of the Mine, Natedi Village (Reported Only)	206	86	49	20.53	24.76	Coal Transportation Road	About 2km

J. Pattnaik
**Authorised Signatory
CMPDI, RI-VII, LAB
BHUBANESWAR**

J. Pattnaik

*NAAQS, 2009

100 80 80 80

AMBIENT AIR QUALITY DATA (NAAQS PARAMETER)

Area : **Talcher**

Project : **Nandira Colliery**

Date of Sampling	Monitoring Station	Ammonia (NH ₃)	Ozone (O ₃)	Lead (Pb)	Arsenic (As)	Nickel (Ni)	CO	Benzo(a)Pyrene	Benzene
		(µg/m ³)	(µg/m ³)	(µg/m ³)	(ng/m ³)	(ng/m ³)	(mg/m ³)	(ng/m ³)	(µg/m ³)
01-Jan-26	Nandira Colony	<20.0	23.85	<0.1	<1.0	<1.0	0.8	BQL(QL)=0.7)	BQL
01-Jan-26	East of the Mine, Natedi Village (Reported Only)	<20.0	22.87	<0.1	<1.0	<1.0	1.1	BQL(QL)=0.7)	BQL
02-Jan-26	East of the Mine, Natedi Village (Reported Only)	<20.0	27.78	<0.1	<1.0	<1.0	1.1	BQL(QL)=0.7)	BQL
02-Jan-26	Nandira Colony	<20.0	28.02	<0.1	<1.0	<1.0	1.3	BQL(QL)=0.7)	BQL
08-Jan-26	East of the Mine, Natedi Village (Reported Only)	<20.0	26.80	<0.1	<1.0	<1.0	1.1	BQL(QL)=0.7)	BQL
08-Jan-26	Nandira Colony	<20.0	17.20	<0.1	<1.0	<1.0	0.9	BQL(QL)=0.7)	BQL
09-Jan-26	East of the Mine, Natedi Village (Reported Only)	<20.0	21.38	<0.1	<1.0	<1.0	1.0	BQL(QL)=0.7)	BQL
09-Jan-26	Nandira Colony	<20.0	12.53	<0.1	<1.0	<1.0	0.8	BQL(QL)=0.7)	BQL
16-Jan-26	East of the Mine, Natedi Village (Reported Only)	<20.0	12.05	<0.1	<1.0	<1.0	1.1	BQL(QL)=0.7)	BQL
16-Jan-26	Nandira Colony	<20.0	14.50	<0.1	<1.0	<1.0	0.5	BQL(QL)=0.7)	BQL
17-Jan-26	East of the Mine, Natedi Village (Reported Only)	<20.0	19.92	<0.1	<1.0	<1.0	1.6	BQL(QL)=0.7)	BQL
17-Jan-26	Nandira Colony	<20.0	27.28	<0.1	<1.0	<1.0	0.7	BQL(QL)=0.7)	BQL
23-Jan-26	Nandira Colony	<20.0	27.78	<0.1	<1.0	<1.0	0.7	BQL(QL)=0.7)	BQL
23-Jan-26	East of the Mine, Natedi Village (Reported Only)	<20.0	19.42	<0.1	<1.0	<1.0	1.5	BQL(QL)=0.7)	BQL
24-Jan-26	East of the Mine, Natedi Village (Reported Only)	<20.0	13.27	<0.1	<1.0	<1.0	1.2	BQL(QL)=0.7)	BQL
24-Jan-26	Nandira Colony	<20.0	18.68	<0.1	<1.0	<1.0	1.1	BQL(QL)=0.7)	BQL
30-Jan-26	Nandira Colony	<20.0	25.57	<0.1	<1.0	<1.0	1.1	BQL(QL)=0.7)	BQL
30-Jan-26	East of the Mine, Natedi Village (Reported Only)	<20.0	18.18	<0.1	<1.0	<1.0	1.3	BQL(QL)=0.7)	BQL
31-Jan-26	East of the Mine, Natedi Village (Reported Only)	<20.0	22.12	<0.1	<1.0	<1.0	1.4	BQL(QL)=0.7)	BQL
31-Jan-26	Nandira Colony	<20.0	18.43	<0.1	<1.0	<1.0	0.9	BQL(QL)=0.7)	BQL

Standard	400(24hrs)	180(hrs)	1.0(24hrs)	6.0(Annual)	20(Annual)	02(8hrs)	01(annual)	05(annual)
----------	------------	----------	------------	-------------	------------	----------	------------	------------

Jattasank
 Authorized Signatory
 CMPDI, RI-VII, LAB
 BHUBANESWAR

Jaswant



सौरभपीडीआई
CMPDI
1986-2016

TABLE--

NOISE LEVEL MONITORING DATA

AREA :

Talcher

PROJECT :

Nandira Colliery

DATE OF SAMPLING	STATION	Noise Level Measurement in Leq dB(A)	
		DAY	NIGHT
14-Jan-26	Project Office	59.3	51.2
14-Jan-26	Sub Station, Nandira Colliery	60.4	49.7
30-Jan-26	Project Office	66.0	49.3
30-Jan-26	Sub Station, Nandira Colliery	62.1	50.2

MoEF Standard Notification dated 25th September, 2000	6.00 AM -10.00 PM Leq 75dB(A) (Industrial)	10.00 PM -6.00 AM Leq 70dB(A) (Industrial)
MoEF Standard Notification dated 25th September, 2000	6.00 AM -10.00 PM Leq 55dB(A) (Residential)	10.00 PM -6.00 AM Leq 45dB(A) (Residential)
MoEF Standard Notification dated 25th September, 2000	6.00 AM -10.00 PM Leq 65dB(A) (Commercial)	10.00 PM -6.00 AM Leq 55dB(A) (Commercial)
MoEF Standard Notification dated 25th September, 2000	6.00 AM -10.00 PM Leq 50dB(A) (Silence Zone)	10.00 PM -6.00 AM Leq 40dB(A) (Silence Zone)

Jeenuati
Authorised Signatory
CMPDI, RI-VII, LAB
BHUBANESWAR

Jeenuati



TABLE-

EFFLUENT QUALITY DATA

Area :

Talcher

(All dimensions are in mg/l unless otherwise stated except pH)

Project :

Nandira Colliery

Date of Sampling	Sampling Station	pH	Oil & Grease	TSS	COD	BOD	Remarks
15-Jan-26	Nandira Colliery Sedimentation Tank Discharge	6.68	<4.0	28	32	-	
31-Jan-26	Nandira Colliery Sedimentation Tank Discharge	6.52	<4.0	20	28	-	

Jathwick
Authorized Signatory
CMPDI, RI-VII, LAB
BHUBANESWAR

Jathwick

MoEF Standard Notification dated 25th September, 2000
and MoEF Schedule VI, General standard for discharge
of Environmental Pollutants Part A: Effluents

5.5-9.0	10	100	250	30
---------	----	-----	-----	----



सीएमपीडीआई
निरीक्षण
cmpdi
Mini Ratna

Drinking Water Quality Data Talcher Area

Project / OCP	Nandira U/G		Indian Drinking Standards (IS-10500):2012	
	Monitoring Station	Canteen , Nandira Colliery	Pit Top, Nandira Colliery	
Date of Sampling	15-Jan-2026	15-Jan-2026	Acceptable	Permissible
Colour(Hazen)	1	2	5	15
Odour	Agreeable	Agrecable	Agreeable	Agreeable
Taste	Agreeable	Agreeable	Agreeable	Agreeable
Turbidity(NTU)	1.8	2.6	1	5
pH	6.67	6.65	6.5-8.5	No relaxation
Total Alkalinity(mg/L)	42.20	75.96	200	600
Chloride(mg/L)	15.88	31.76	250	1000
Sulphate(mg/L)	99.97	43.15	200	400
Nitrate(mg/L)	<0.5	4.23	45	No relaxation
Total Hardness (Ca CO3)(mg/L)	92.73	129.02	200	600
Calcium(mg/L)	16	43	75	200
Fluoride(mg/L)	0.45	0.32	1	1.5
Total Dissolve Solid(mg/L)	182	222	500	2000
Copper(mg/L)	<0.03	<0.03	0.05	1.5
Manganese(mg/L)	<0.04	<0.04	0.1	0.3
Iron(mg/L)	<0.1	<0.1	1.0	No relaxation
Zinc(mg/L)	0.80	1.01	5	15
Lead(mg/L)	<0.005	<0.005	0.01	No relaxation
Cadmium(mg/L)	<0.001	<0.001	0.003	No relaxation
Total Chromium (mg/L)	<0.01	<0.01	0.05	No relaxation
Arsenic(mg/L)	<0.005	<0.005	0.01	No relaxation
Boron(mg/L)	<0.2	<0.2	0.5	2.4

Authorised Signatory
Authorised Signatory
CMPDI, RI-VII, LAB
BHUBANESWAR

Janab



सीएमपीडीआई
रिपी एन
cmpdi
Mini Katna

Drinking Water Quality Data Talcher Area

Project / OCP	Nandira U/G		Indian Drinking Standards (IS-10500):2012	
	Canteen , Nandira Colliery	Pit Top, Nandira Colliery	Acceptable	Permissible
Monitoring Station				
Date of Sampling	15-Jan-2026	15-Jan-2026		
Selenium(mg/L)	<0.005	<0.005	0.01	No relaxation
Sodium(mg/L)	9.91	8.51	-	-
Potassium(mg/L)	5.05	0.96	-	-
Phenolics(mg/L)	<0.001	<0.001	0.001	0.002
Residual Free Chlorine(mg/L)	<0.2	<0.2	0.2	1.0
MPN (Index/100 ml)	Not Detected	Not Detected	-	-

Jatanaik
Authorized Signatory
CMPDI, RI-VII, LAD
BHUBANESWAR

Jatanaik

Nandira Air Stations

Nandira Air monitoring stations



Google Earth

Imagery © 2014 Google, Microsoft, etc.
© 2014 Google

**Environmental Monitoring Report
For
January-2026**

**Project: Deulbera Colliery
Area: Talcher
Coalfield: Talcher**



Mahanadi Coalfields Limited



Central Mine Planning & Design Institute Ltd.
(A Subsidiary of Coal India Ltd.)

Regional Institute-VII, Samantpuri, P.O : RRL, Bhubaneswar-751013 (Odisha)
[Assistance from Environment Division, CMPDI(HQs), Ranchi]

The test report shall not be reproduced in part or full without written approval of the competent authority



सीएनपीडीआई
 WITH THE
cmpdi
 AIR QUALITY

Test Report

AMBIENT AIR QUALITY DATA

Area :

Talcher

(Compliance Station)

Project :

Deulbera

(conc. in $\mu\text{g}/\text{cu.m.}$)

Date of Sampling	Monitoring Station	SPM	PM10	PM2.5	SO2	NOx	CO (mg/m ³)	Dust Generating Source(DGS)	Distance from DGS
03-Jan-26	GM Office Lingraj (Reported Only)	278	155	69	19.39	30.1	0.7	Transportation	About 500m
21-Jan-26	GM Office Lingraj (Reported Only)	260	153	68	14.73	24.76	0.5	Transportation	About 500m

J. K. Sahoo
 Authorised Signatory
 CMPDI, RI-VII, LAB
 BHUBANESWAR

J. K. Sahoo

MoEF Standards Notification dated 25th September, 2009

800	300		120	120	92/8 (Hours)
-----	-----	--	-----	-----	--------------



सीएनपीडीआई
CMPDI
भारत सरकार

TABLE-

NOISE LEVEL MONITORING DATA

AREA :

Talcher

PROJECT :

Deulbera Colliery

DATE OF SAMPLING	STATION	Noise Level Measurement in Leq dB(A)	
		DAY	NIGHT
14-Jan-26	Manager's Office	62.4	52.3
30-Jan-26	Manager's Office	64.3	50.9

MoEF Standard Notification dated 25th September, 2000	6.00 AM - 10.00 PM Leq 75dB(A) (Industrial)	10.00 PM - 6.00 AM Leq 70dB(A) (Industrial)
MoEF Standard Notification dated 25th September, 2000	6.00 AM - 10.00 PM Leq 55dB(A) (Residential)	10.00 PM - 6.00 AM Leq 45dB(A) (Residential)
MoEF Standard Notification dated 25th September, 2000	6.00 AM - 10.00 PM Leq 65dB(A) (Commercial)	10.00 PM - 6.00 AM Leq 55dB(A) (Commercial)
MoEF Standard Notification dated 25th September, 2000	6.00 AM - 10.00 PM Leq 50dB(A) (Silence Zone)	10.00 PM - 6.00 AM Leq 40dB(A) (Silence Zone)

J. Jaiswal
Authorized Signatory
CMPDI, RI-VII, LAB
BHUBANESWAR

Jaiswal



सीएमपीडीआई
मिनी लैब
cmpdi
Mini Lab

Drinking Water Quality Data Talcher Area

Project / OCP	Deulbera U/G			Indian Drinking Standards (IS-10500):2012	
	Deulbera Colliery Mine Discharge at Pit Top	Rani Park Submersible Pump	Deulbera Manager Office Tap Water		
Date of Sampling	15-Jan-2026	15-Jan-2026	15-Jan-2026	Acceptable	Permissible
Colour(Hazen)	3	3	2	5	15
Odour	Agreeable	Agreeable	Agreeable	Agreeable	Agreeable
Taste	Agreeable	Agreeable	Agreeable	Agreeable	Agreeable
Turbidity(NTU)	1.5	2.5	1.3	1	5
pH	7.26	6.97	7.38	6.5-8.5	No relaxation
Total Alkalinity(mg/L)	105.50	25.32	50.64	200	600
Chloride(mg/L)	45.65	17.86	19.85	250	1000
Sulphate(mg/L)	72.06	59.18	44.52	200	400
Nitrate(mg/L)	5.79	4.93	1.07	45	No relaxation
Total Hardness (Ca CO ₃)(mg/L)	201.60	88.70	84.67	200	600
Calcium(mg/L)	35.20	12.80	11.20	75	200
Fluoride(mg/L)	0.14	0.38	0.47	1	1.5
Total Dissolve Solid(mg/L)	319	138	131	500	2000
Copper(mg/L)	<0.03	<0.03	<0.03	0.05	1.5
Manganese(mg/L)	0.51	<0.04	<0.04	0.1	0.3
Iron(mg/L)	<0.1	<0.1	<0.1	1.0	No relaxation
Zinc(mg/L)	0.82	<0.04	<0.04	5	15
Lead(mg/L)	<0.005	<0.005	<0.005	0.01	No relaxation
Cadmium(mg/L)	<0.001	<0.001	<0.001	0.003	No relaxation
Total Chromium (mg/L)	<0.01	<0.01	<0.01	0.05	No relaxation
Arsenic(mg/L)	<0.005	<0.005	<0.005	0.01	No relaxation
Boron(mg/L)	<0.2	<0.2	<0.2	0.5	2.4

Tafanach
Authorised Signatory
CMPDI, RI-VII, LAB
BHUBANESWAR

Januach



सीएमपीडीआई
निर्मल राय
cmpdi
Mini Ratna

Drinking Water Quality Data Talcher Area

Project / OCP	Deulbera U/G			Indian Drinking Standards (IS-10500):2012	
	Deulbera Colliery Mine Discharge at Pit Top	Rani Park Submersible Pump	Deulbera Manager Office Tap Water	Acceptable	Permissible
Monitoring Station					
Date of Sampling	15-Jan-2026	15-Jan-2026	15-Jan-2026	Acceptable	Permissible
Selenium(mg/L)	<0.005	<0.005	<0.005	0.01	No relaxation
Sodium(mg/L)	7.20	7.48	5.44	-	-
Potassium(mg/L)	4.93	3.76	1.76	-	-
Phenolics(mg/L)	<0.001	<0.001	<0.001	0.001	0.002
Residual Free Chlorine(mg/L)	<0.2	<0.2	<0.2	0.2	1.0
MPN (Index/100 ml)	Not Detected	Not Detected	Not Detected	-	-

To Hawaii
Authorised Signatory
CMPDI, RI-VII, LAB
BHUBANESWAR

Jaswanti

Deulbera Air Stations

Deulbera Air monitoring stations



Google Earth

© 2018 Google

**Environmental Monitoring Report
For
January-2026**

**Project: Handhidhua Colliery
Area: Talcher
Coalfield: Talcher**



Mahanadi Coalfields Limited



Central Mine Planning & Design Institute Ltd.
(A Subsidiary of Coal India Ltd.)

Regional Institute-VII, Samantpuri, P.O : RRL, Bhubaneswar-751013 (Odisha)
[Assistance from Environment Division, CMPDI(HQs), Ranchi]

The test report shall not be reproduced in part or full without written approval of the competent authority



Test Report

AMBIENT AIR QUALITY DATA

Area : **Talcher** (Compliance Station)

Project : **Handhidhua Colliery** (conc. in $\mu\text{g}/\text{cu.m.}$)

Date of Sampling	Monitoring Station	SPM	PM10	PM2.5	SO2	NOx	CO (mg/m3)	Dust Generating Source(DGS)	Distance from DGS
07-Jan-26	Manager's Office	253	149	64	18.98	23.26	-	Local Transportation, CHP	About 500m
22-Jan-26	Manager's Office	269	166	73	23.21	24.76	-	Local Transportation, CHP	About 500m

[Signature]
Authorised Signatory
CMPDI, RI-VII, LAB
BHUBANESWAR

[Signature]

MoEF Standards Notification dated 25th September, 2000	600	300		120	120	92/8 Hours)
--	-----	-----	--	-----	-----	-------------



सीएमपीडीआई
रिपी एन
cmpdi
Mini Ratna

Drinking Water Quality Data Talcher Area

Project / OCP	Handhidhua Colliery			Indian Drinking Standards (IS-10500):2012	
	Monitoring Station	19X Cut Road Bore Hole Point	Pit Top Water	RWSS (Pit Top Water)	
Date of Sampling	15-Jan-2026	15-Jan-2026	15-Jan-2026	Acceptable	Permissible
Colour(Hazen)	1	2	3	5	15
Odour	Agreeable	Agreeable	Agreeable	Agreeable	Agreeable
Taste	Agreeable	Agreeable	Agreeable	Agreeable	Agreeable
Turbidity(NTU)	1.2	1.6	1.5	1	5
pH	6.06	6.67	6.72	6.5-8.5	No relaxation
Total Alkalinity(mg/L)	59.08	67.52	63.30	200	600
Chloride(mg/L)	31.76	25.80	23.82	250	1000
Sulphate(mg/L)	103.29	112.74	80	200	400
Nitrate(mg/L)	4.86	3.93	3.59	45	No relaxation
Total Hardness (Ca CO ₃)(mg/L)	177.40	161.28	129.02	200	600
Calcium(mg/L)	41.60	40	36.80	75	200
Fluoride(mg/L)	0.41	0.38	0.41	1	1.5
Total Dissolve Solid(mg/L)	272	282	251	500	2000
Copper(mg/L)	<0.03	<0.03	<0.03	0.05	1.5
Manganese(mg/L)	0.24	0.28	0.33	0.1	0.3
Iron(mg/L)	<0.1	<0.1	<0.1	1.0	No relaxation
Zinc(mg/L)	<0.04	<0.04	<0.04	5	15
Lead(mg/L)	<0.005	<0.005	<0.005	0.01	No relaxation
Cadmium(mg/L)	<0.001	<0.001	<0.001	0.003	No relaxation
Total Chromium (mg/L)	<0.01	<0.01	<0.01	0.05	No relaxation
Arsenic(mg/L)	<0.005	<0.005	<0.005	0.01	No relaxation
Boron(mg/L)	<0.2	<0.2	<0.2	0.5	2.4

Northach
Authorized Signatory
CMPDI, RI-VII, LAB
BHUBANESWAR

Janak



सीएमपीडीआई
मिनी लैब
cmpdi
Mini Lab

Drinking Water Quality Data Talcher Area

Project / OCP	Handhidhua Colliery			Indian Drinking Standards (IS-10500):2012	
	19X Cut Road Bore Hole Point	Pit Top Water	RWSS (Pit Top Water)	Acceptable	Permissible
Monitoring Station	15-Jan-2026	15-Jan-2026	15-Jan-2026	Acceptable	Permissible
Date of Sampling	15-Jan-2026	15-Jan-2026	15-Jan-2026	Acceptable	Permissible
Selenium(mg/L)	<0.005	<0.005	<0.005	0.01	No relaxation
Sodium(mg/L)	9.91	12.94	13.86	-	-
Potassium(mg/L)	0.68	3.01	2.17	-	-
Phenolics(mg/L)	<0.001	<0.001	<0.001	0.001	0.002
Residual Free Chlorine(mg/L)	<0.2	<0.2	<0.2	0.2	1.0
MPN (Index/100 ml)	Not Detected	Not Detected	Not Detected	-	-

Tattarash
Authorised Signatory
CMPDI, RI-VII, LAB
BHUBANESWAR

Janak

**Environmental Monitoring Report
For
January-2026**

**Project: Mandapal Sand Mine
Area: Talcher
Coalfield: Talcher**



Mahanadi Coalfields Limited



Central Mine Planning & Design Institute Ltd.
(A Subsidiary of Coal India Ltd.)

Regional Institute-VII, Samantpuri, P.O : RRL, Bhubaneswar-751013 (Odisha)
[Assistance from Environment Division, CMPDI(HQs), Ranchi]

The test report shall not be reproduced in part or full without written approval of the competent authority



संशोधनपीसी.आई.डी.
 सोल्यूशन्स
cmpdi
 AIR QUALITY

Test Report

AMBIENT AIR QUALITY DATA

Area :

Talcher

(Reference Station)

Project :

Mandapal Sand Mine

(conc. in $\mu\text{g}/\text{cu.m.}$)

Date of Sampling	Monitoring Station	SPM	PM10	PM2.5	SO2	NOx	Dust Generating Source(DGS)	Distance from DGS
01-Jan-26	Near Pachismeshwar Temple	187	81	44	20.82	20.05	Mining Activity	Less than 500m
01-Jan-26	Near Mandapal Chowk	198	85	47	23.02	33.01	Mining Activity	Less than 500m
02-Jan-26	Near Mandapal Chowk	214	91	52	21.59	35.09	Mining Activity	Less than 500m
02-Jan-26	Near Pachismeshwar Temple	209	83	49	18.58	31.51	Mining Activity	Less than 500m
08-Jan-26	Near Mandapal Chowk	186	77	41	21.41	31.51	Mining Activity	Less than 500m
08-Jan-26	Near Pachismeshwar Temple	167	72	41	15.62	29.02	Mining Activity	Less than 500m
09-Jan-26	Near Mandapal Chowk	179	73	39	16.16	34.51	Mining Activity	Less than 500m
09-Jan-26	Near Pachismeshwar Temple	182	77	43	16.12	37.03	Mining Activity	Less than 500m
16-Jan-26	Near Mandapal Chowk	195	81	47	22.77	25.59	Mining Activity	Less than 500m
16-Jan-26	Near Pachismeshwar Temple	193	79	44	13.19	26.14	Mining Activity	Less than 500m
17-Jan-26	Near Mandapal Chowk	187	78	43	12.95	25.59	Mining Activity	Less than 500m
17-Jan-26	Near Pachismeshwar Temple	198	87	49	11.61	23.94	Mining Activity	Less than 500m
23-Jan-26	Near Pachismeshwar Temple	181	75	42	21.87	34.67	Mining Activity	Less than 500m
23-Jan-26	Near Mandapal Chowk	192	80	45	19.64	28.89	Mining Activity	Less than 500m
24-Jan-26	Near Mandapal Chowk	203	83	48	15.62	20.64	Mining Activity	Less than 500m
24-Jan-26	Near Pachismeshwar Temple	194	80	48	19.79	41.82	Mining Activity	Less than 500m
30-Jan-26	Near Mandapal Chowk	194	77	44	16.96	41.27	Mining Activity	Less than 500m

*NAAQS, 2009

100 60 80 80

Authorised Signatory
 CMPDI, RI-VII, LAB
 BHUBANESWAR

Signature

Project :

Mandapal Sand Mine

(conc. in $\mu\text{g}/\text{cu.m.}$)

Date of Sampling	Monitoring Station	SPM	PM10	PM2.5	SO2	NOx	Dust Generating Source(DGS)	Distance from DGS
30-Jan-26	Near Pachismeshwar Temple	190	75	45	13.15	26.66	Mining Activity	Less than 500m
31-Jan-26	Near Pachismeshwar Temple	185	71	43	20.26	31.37	Mining Activity	Less than 500m
31-Jan-26	Near Mandapal Chowk	214	86	49	12.95	38.79	Mining Activity	Less than 500m

K. H. H. H.
Authorized Signatory
CMPDI, RI-VII, LAB
BHUBANESWAR

Janak

*N/AQS, 2009

		100	60	80	80
--	--	-----	----	----	----



सीएमपीडी
CMPDI
1980-2000

TABLE-

NOISE LEVEL MONITORING DATA

AREA :

Talcher

PROJECT :

Mandapal Sand Mine

DATE OF SAMPLING	STATION	Noise Level Measurement in Leq dB(A)	
		DAY	NIGHT
14-Jan-26	Near Gopinathpur Village	45.7	39.1
30-Jan-26	Near Gopinathpur Village	46.5	36.7

MoEF Standard Notification dated 25th September, 2000	6.00 AM -10.00 PM Leq 75dB(A) (Industrial)	10.00 PM -6.00 AM Leq 70dB(A) (Industrial)
MoEF Standard Notification dated 25th September, 2000	6.00 AM -10.00 PM Leq 55dB(A) (Residential)	10.00 PM -6.00 AM Leq 45dB(A) (Residential)
MoEF Standard Notification dated 25th September, 2000	6.00 AM -10.00 PM Leq 65dB(A) (Commercial)	10.00 PM -6.00 AM Leq 55dB(A) (Commercial)
MoEF Standard Notification dated 25th September, 2000	6.00 AM -10.00 PM Leq 50dB(A) (Silence Zone)	10.00 PM -6.00 AM Leq 40dB(A) (Silence Zone)

J. Jaisankar
Authorized Signatory
CMPDI, RI-VII, LAB
BHUBANESWAR

Jaisankar

Mandapal sand mine Air Stations

Mandapal sand mine Air monitoring stations



Google Earth

Image © 2023 Maxar Inc./Google
All Rights Reserved